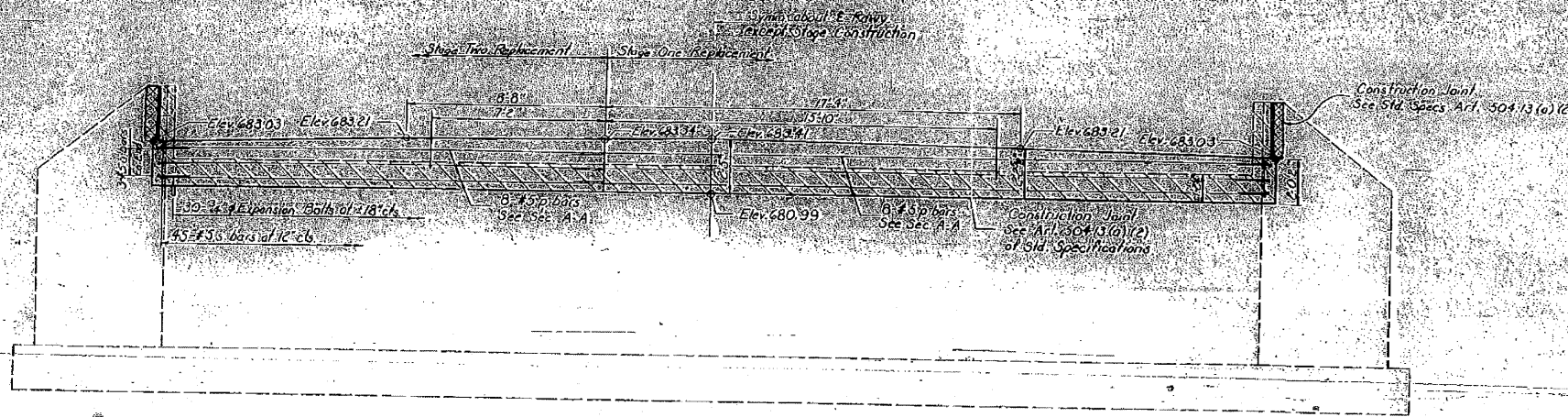
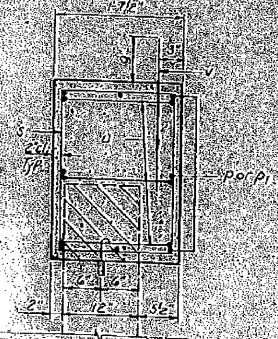


STATE OF ILLINOIS  
DEPARTMENT OF TRANSPORTATION

DATE	BY	CHKD	APP'D
12/19/08	JMS	ELH	

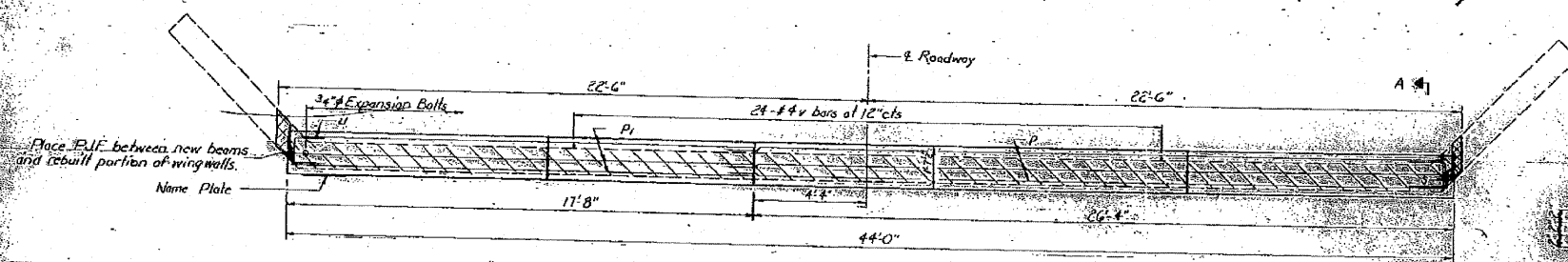


ELEVATION



SECTION A-A

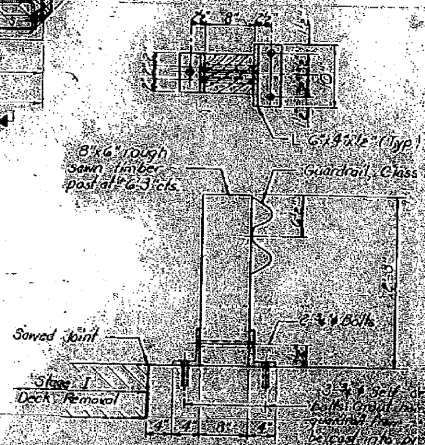
Note:  
Cross-hatched area shall be poured after beams are in place.  
Hatched area indicates Concrete Removal.  
Reinforcement extending into removed area shall be cleared, tied, and poured into new construction.  
All bars shall be anchored by chrome-plated steel expansion bolts.  
Expansion bolts shall be anchored in sound concrete.



PLAN

BUILDING MATERIAL

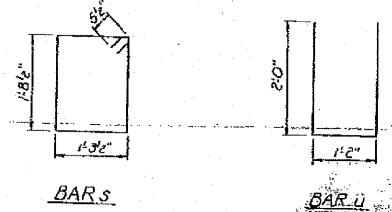
Bar	Qty	Size	Location
1	8	#4	Deck Slab
2	8	#4	Deck Slab
3	8	#4	Deck Slab
4	8	#4	Deck Slab
5	8	#4	Deck Slab
6	8	#4	Deck Slab
7	8	#4	Deck Slab
8	8	#4	Deck Slab
9	8	#4	Deck Slab
10	8	#4	Deck Slab
11	8	#4	Deck Slab
12	8	#4	Deck Slab
13	8	#4	Deck Slab
14	8	#4	Deck Slab
15	8	#4	Deck Slab
16	8	#4	Deck Slab
17	8	#4	Deck Slab
18	8	#4	Deck Slab
19	8	#4	Deck Slab
20	8	#4	Deck Slab
21	8	#4	Deck Slab
22	8	#4	Deck Slab
23	8	#4	Deck Slab
24	8	#4	Deck Slab
25	8	#4	Deck Slab
26	8	#4	Deck Slab
27	8	#4	Deck Slab
28	8	#4	Deck Slab
29	8	#4	Deck Slab
30	8	#4	Deck Slab
31	8	#4	Deck Slab
32	8	#4	Deck Slab
33	8	#4	Deck Slab
34	8	#4	Deck Slab
35	8	#4	Deck Slab
36	8	#4	Deck Slab
37	8	#4	Deck Slab
38	8	#4	Deck Slab
39	8	#4	Deck Slab
40	8	#4	Deck Slab
41	8	#4	Deck Slab
42	8	#4	Deck Slab
43	8	#4	Deck Slab
44	8	#4	Deck Slab
45	8	#4	Deck Slab
46	8	#4	Deck Slab
47	8	#4	Deck Slab
48	8	#4	Deck Slab
49	8	#4	Deck Slab
50	8	#4	Deck Slab



TEMPORARY GUARDRAIL DETAIL  
(See Special Provisions)

DESIGNED: *Steve Lindsey*  
CHECKED: *James P. ...*  
DRAWN: *St. Lindsey*  
CHECKED: *IP*

EXAMINED: *Steve Lindsey*  
DATE: *12/19/08*



STATE OF ILLINOIS  
DEPARTMENT OF TRANSPORTATION

EXISTING STRUCTURE PLANS

FILE NAME = 0261428-shr-rem61.dgn	USER NAME = HAS	DESIGNED - JMS	REVISED -	STATE OF ILLINOIS DEPARTMENT OF TRANSPORTATION	SCALE: SHEET NO. 5 OF 5 SHEETS STA. TO STA.	FOR REFERENCE ONLY				
PLOT SCALE = 0.0039 1/2 IN.	CHECKED - ELH	REVISED -	F.A.P. RTE. 638			SECTION 136BR-1	COUNTY HENRY	TOTAL SHEETS 67	SHEET NO. 51	CONTRACT NO. 64428
PLOT DATE = 3/23/2009 1:07:26 PM	DATE 12/19/08	REVISED -	FED. ROAD DIST. NO.			ILLINOIS FED. AID PROJECT				