

# STOP LINE SIGN FOR TEMPORARY SIGNALS



SIZE: 600(24) × 600(24)  
 100(4) CAPITAL LETTERS - BLACK  
 13 (1/2) BORDER - BLACK  
 WHITE REFLECTIVE - TYPE AP  
 HIGH INTENSITY PRISMATIC SHEETING

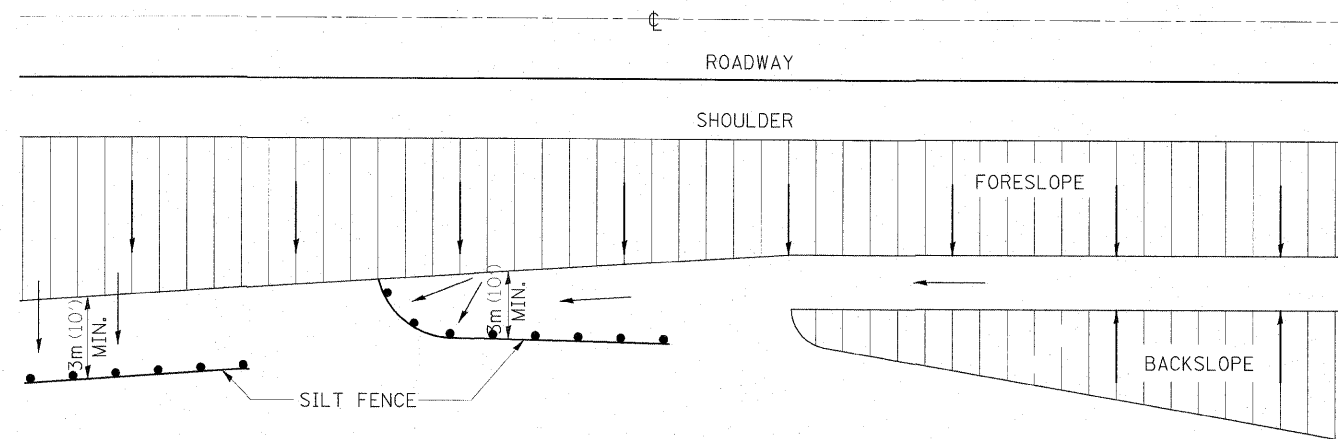
**GENERAL NOTE:**

THIS SIGN SHALL BE INSTALLED AT THE STOP LINE AS DIRECTED BY ENGINEER.  
 ALL DIMENSIONS ARE IN MILLIMETERS (INCHES) UNLESS OTHERWISE NOTED.

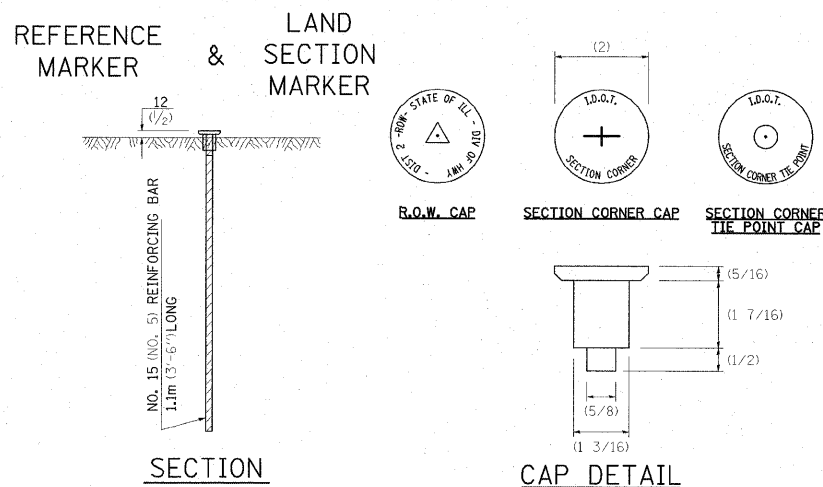
REVISED - 1-22-07

## STOP LINE SIGN FOR TEMPORARY SIGNALS 99.4

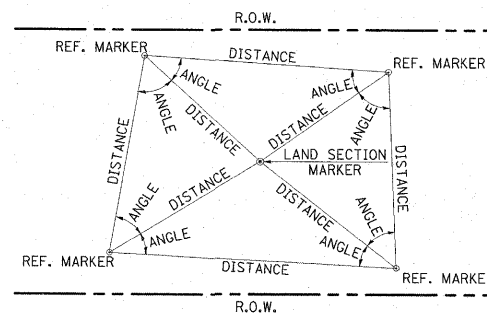
# EROSION CONTROL DETAILS FOR SILT FENCE



# LAND SECTION & REFERENCE MARKERS



**METHOD OF REFERENCING MARKERS**



- USE INSTRUMENT TIES TO NEARBY LAND-MARKS (STEEPLES, TOWERS, SILOS, ETC...)
- IN CULTIVATED FIELDS, SET 600(24) OR MORE BELOW GROUND SURFACE.
- IN FENCE LINE OR PROTECTED AREA SET TOP AT GROUND LEVEL.

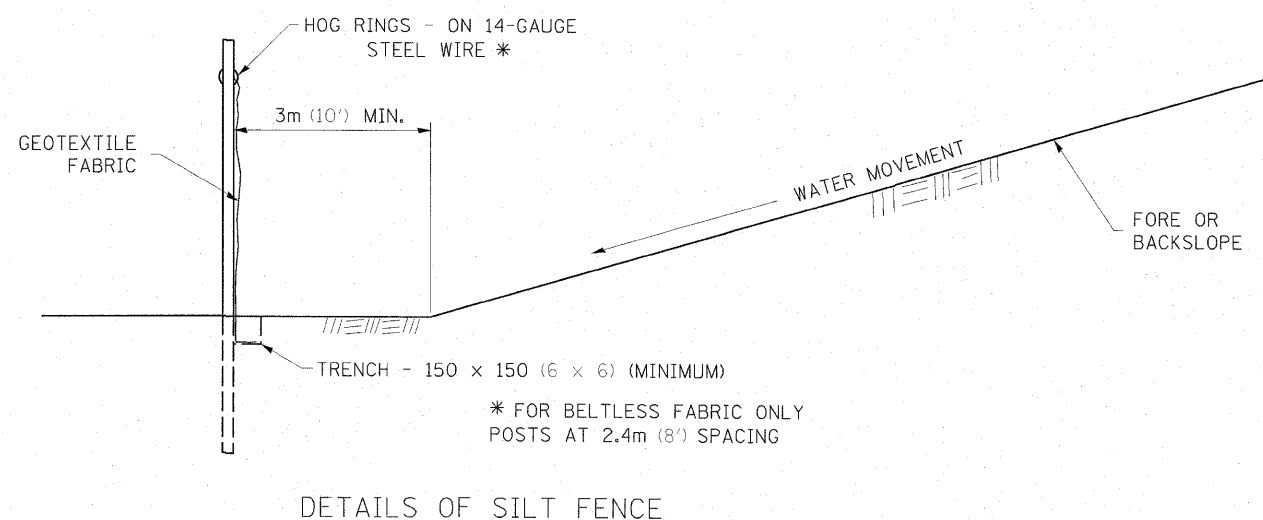
ALL DIMENSIONS ARE IN MILLIMETERS (INCHES) UNLESS OTHERWISE NOTED.

**METHOD OF REFERENCING POINTS**  
 REFERENCE MARKERS SHALL BE USED TO TIE IN PERMANENT LAND SECTION AND 1/4 SECTION CORNERS. WHERE LAND SECTION MARKERS FALL IN THE SHOULDERS OR GRAVEL SURFACES, THE TOP OF THE BAR SHALL BE KEPT 75(3) BELOW THE SURFACE. LAND SECTION MARKERS LOCATED IN TRAFFIC LANES SHALL NOT BE REPLACED.

METAL CAPS SHALL BE PLACED ON TOP OF THE REINFORCEMENT BAR. THERE ARE 3 TYPES OF CAPS, ONE FOR THE RIGHT-OF-WAY CORNERS, ONE FOR THE SECTION CORNERS AND ONE FOR THE SECTION CORNER TIE POINTS. THE CAPS WILL BE SUPPLIED BY IDOT, CALL CHIP CORDELL (815) 284-5370 A MINIMUM OF ONE WEEK BEFORE THE CAPS ARE NEEDED

REVISED - 4-22-05

## LAND SECTION & REFERENCE MARKERS 63.4



**DETAILS OF SILT FENCE**

ALL DIMENSIONS ARE IN MILLIMETERS (INCHES) UNLESS OTHERWISE NOTED.

REVISED - 10-22-01

## EROSION CONTROL DETAILS FOR SILT FENCE 29.2

FILE NAME = 0264428-sht-details08.dgn	USER NAME = HRS	DESIGNED - JMS	REVISED -	<b>STATE OF ILLINOIS DEPARTMENT OF TRANSPORTATION</b>	<b>DISTRICT 2 STANDARDS</b>	F.A.P. RTE. 638	SECTION 136BR-1, 137-1BR	COUNTY HENRY	TOTAL SHEETS 67	SHEET NO. 60	
PLOT SCALE = 0.0839" = 1'	CHECKED - ELH	REVISED -	SCALE: NO SCALE			SHEET NO. 3 OF 10 SHEETS	STA. TO STA.	CONTRACT NO. 64428		FED. ROAD DIST. NO.	ILLINOIS FED. AID PROJECT
PLOT DATE = 3/24/2009 6:17:43 AM	DATE - 3/13/09	REVISED -									