

PROJECT ENGINEER: REBECCA MARRUFFO

SENIOR SQUAD LEADER: KEVIN HENSON (815)-284-5971

CONTRACT NO. 64737

F.A. RTE.	SECTION	COUNTY	TOTAL SHEETS	SHEET NO.
599	103MFT-T	ROCK ISLAND	55*	1

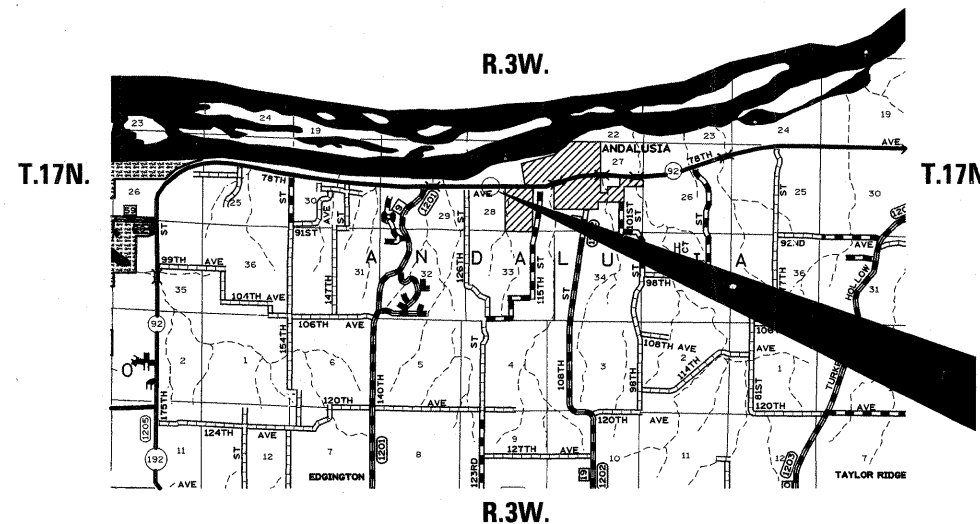
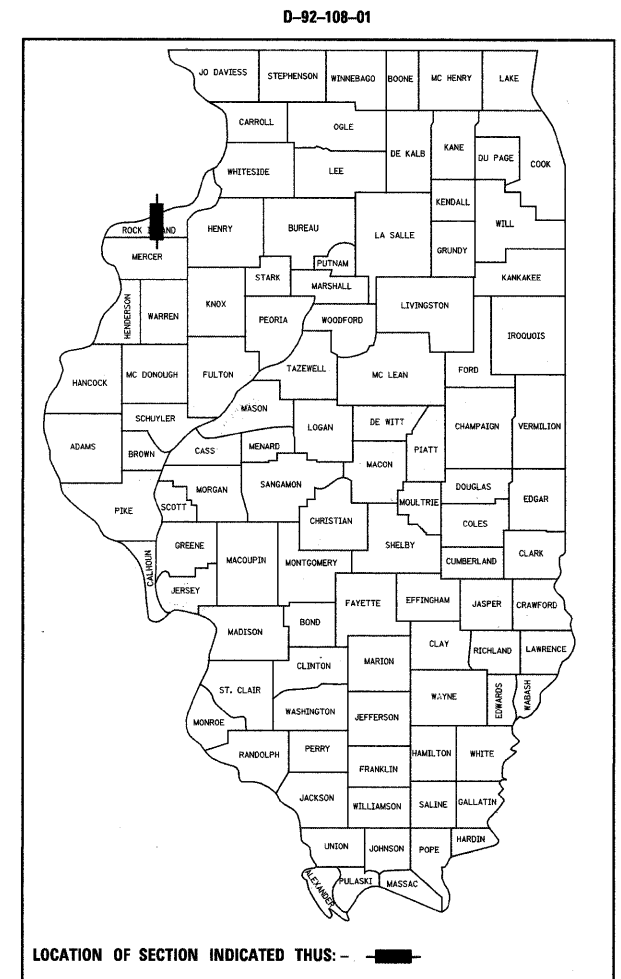
*55-1-54

STATE OF ILLINOIS
DEPARTMENT OF TRANSPORTATION
DIVISION OF HIGHWAYS
**PROPOSED
HIGHWAY PLANS**

FAP ROUTE 599 (IL 92)
SECTION 103MFT-T
PROJECT ACF-0599(024)
ROCK ISLAND COUNTY

C-92-007-09

FOR INDEX OF SHEETS, SEE SHEET NO. 2



**IMPROVEMENT BEGINS
STA. 989 + 93.03
SECTION BEGINS
STA. 995 + 64**

INCLUDES THE REMOVAL AND REPLACEMENT
OF THE EXISTING BOX CULVERT
EXISTING SN-081-1050
PROPOSED SN-081-1116

**SECTION ENDS
STA. 997 + 02
IMPROVEMENT ENDS
STA. 1003 + 02.55**

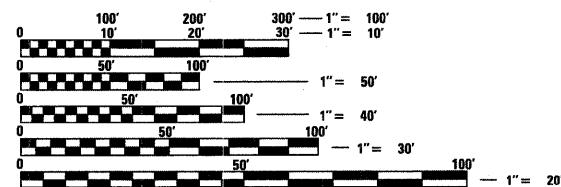
STATE OF ILLINOIS
DEPARTMENT OF TRANSPORTATION
DIVISION OF HIGHWAYS

SUBMITTED 12/05 2009

[Signature]
DEPUTY DIRECTOR OF HIGHWAYS, REGION ENGINEER

May 8, 2009
[Signature]
ENGINEER OF DESIGN AND ENVIRONMENT

May 8, 2009
[Signature]
DIRECTOR OF HIGHWAYS, CHIEF ENGINEER



FULL SIZE PLANS HAVE BEEN PREPARED USING STANDARD
ENGINEERING SCALES. REDUCED SIZED PLANS WILL NOT
CONFORM TO STANDARD SCALES. IN MAKING MEASUREMENTS
ON REDUCED PLANS, THE ABOVE SCALES MAY BE USED.

J.U.L.I.E.
JOINT UTILITY LOCATION INFORMATION FOR EXCAVATION
1-800-892-0123

CONTRACT NO. 64737

ANDELUSIA TOWNSHIP, SECTION 28

GROSS LENGTH OF PROJECT = 138 LIN. FT. = 0.026 MILES
NET LENGTH OF PROJECT = 138 LIN. FT. = 0.026 MILES

**PRINTED BY THE AUTHORITY
OF THE STATE OF ILLINOIS**