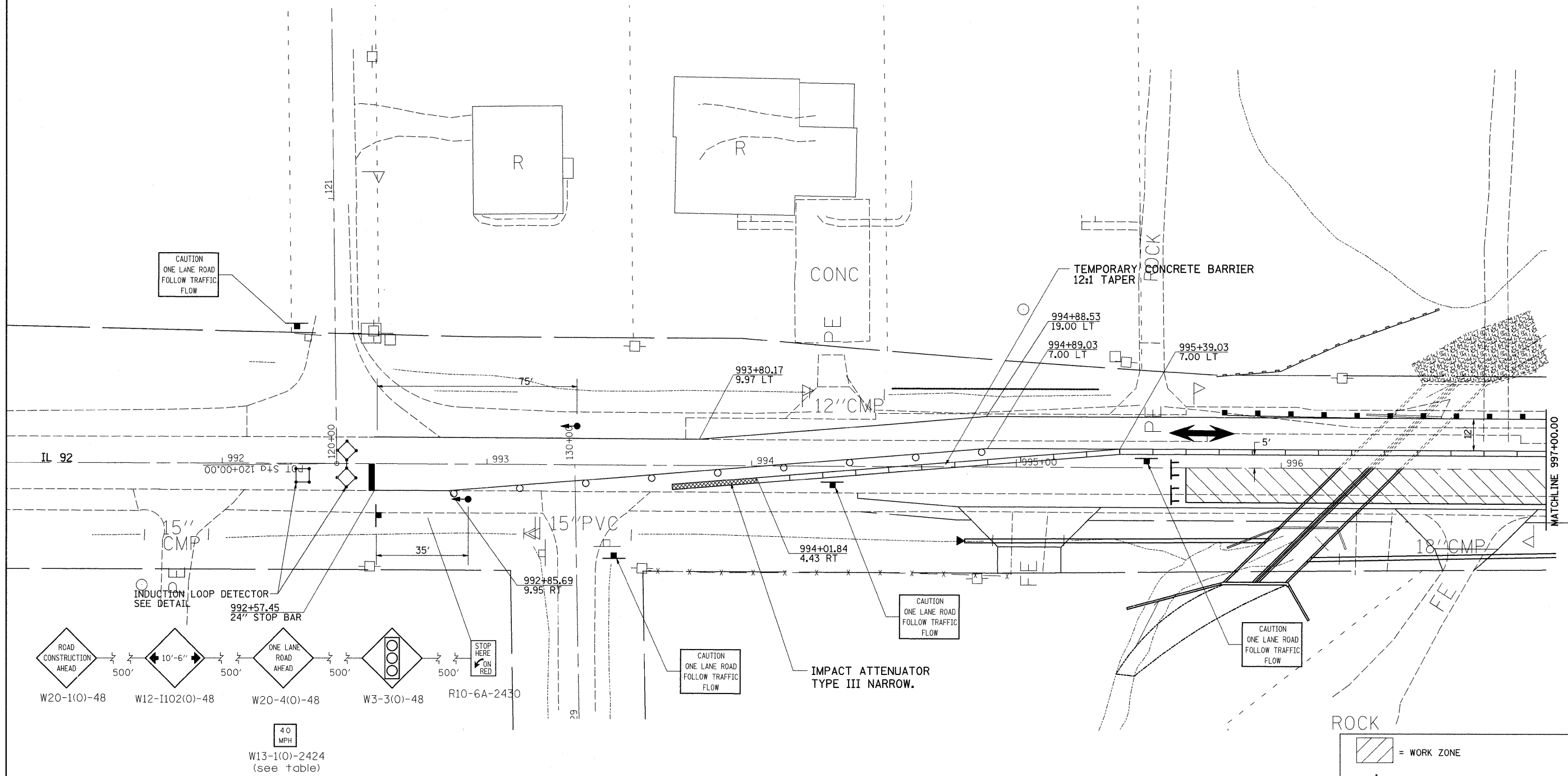
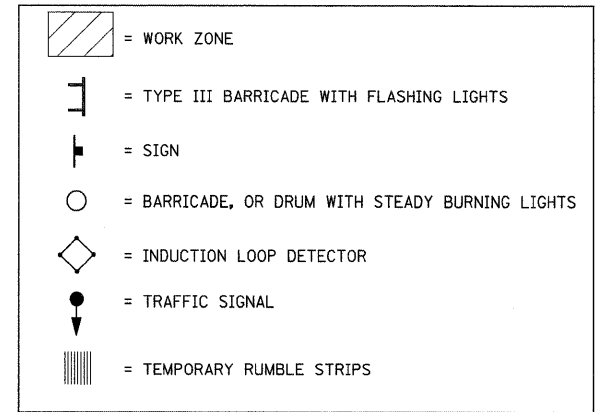


STAGE 3



STAGE 3 NOTES

1. USE STANDARD 701321 FOR CULVERT WORK.
2. CONSTRUCT CULVERT RT TO STAGE CONSTRUCTION LINE.
3. PLACE PROPOSED SHOULDERS RT FROM STA 994+40 TO STA 997+58.58
4. CONSTRUCT FE AND PE ACCORDING TO PLANS.
5. GRADE AND SHAPE SLOPES.



FILE NAME =	USER NAME = hensonke	DESIGNED -	REVISED -	STATE OF ILLINOIS DEPARTMENT OF TRANSPORTATION	STAGING DETAIL SHEET				F.A.P. RTE.	SECTION	COUNTY	TOTAL SHEETS	SHEET NO.		
ct:\pw_work\pwsdot\hensonke\dms34329\d1801stg.dgn		DRAWN -	REVISED -		SCALE:	SHEET NO.	OF	SHEETS	STA.	TO STA.	599	103MFT-T	ROCK ISLAND	55	22
		CHECKED -	REVISED -		CONTRACT NO. 64737										
		DATE -	REVISED -		FED. ROAD DIST. NO. ILLINOIS FED. AID PROJECT										