

Bench Mark: Point #477, CMP; North: 1,738087.76 East: 2,140,232.17, Elev. 581.515

Existing Structure: S.N. 081-1050, built in 1940 as double 7'x7' R.C. box culvert, 42'-10" face to face of headwall with culvert length 60'-4". Traffic to be maintained utilizing staged construction.

© F.A.P. 599 (IL. 92), Stage Const. Line & P.G.

STATE OF ILLINOIS
DEPARTMENT OF TRANSPORTATION

No Salvage

DESIGN SCOUR ELEVATION TABLE

Design Scour Elevation (ft.)	Upstream	Downstream
	563.02	560.35

DESIGN SPECIFICATIONS

2002 AASHTO Standard Specifications

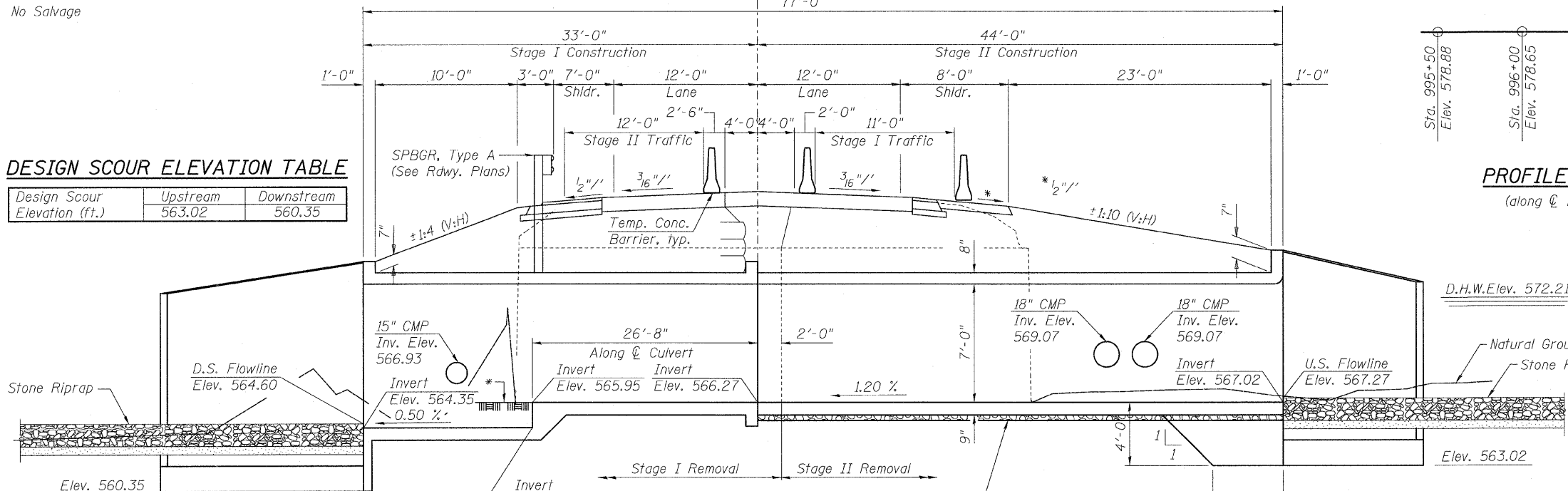
DESIGN STRESSES

FIELD UNITS

$f'c = 3,500$ psi
 $f_y = 60,000$ psi (Reinforcement)

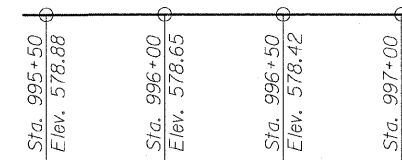
LOADING HS-20-44

Allow 50#/sq. ft. for future wearing surface.



PROFILE GRADE

(along centerline roadway)



WATERWAY INFORMATION

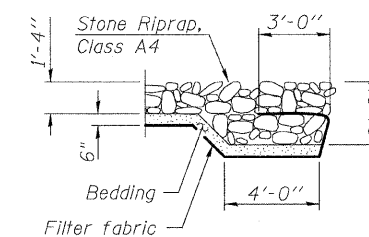
Drainage Area = 0.76 sq. mi. Low Grade Elev. 578.07 @ Sta. 117+00

Flood	Freq. Yr.	Q C.F.S.	Opening Sq. Ft.		Head - Ft.		Headwater El.	
			Exist.	Prop.	Exist.	Prop.	Exist.	Prop.
Design	10	592	54.9	63.0	2.07	1.50	573.14	572.57
Base	50	964	70.8	79.0	3.65	3.08	575.86	575.29
Overtop Exist.	100	1127	76.3	84.4	5.72	4.62	577.22	576.66
Overtop Prop.	143	1218	79.9	91.0	5.22	5.01	578.08	578.08

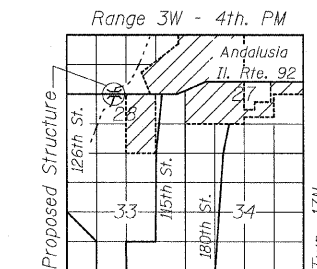
LONGITUDINAL SECTION

Dimensions are at Right Angles to centerline Roadway except as noted

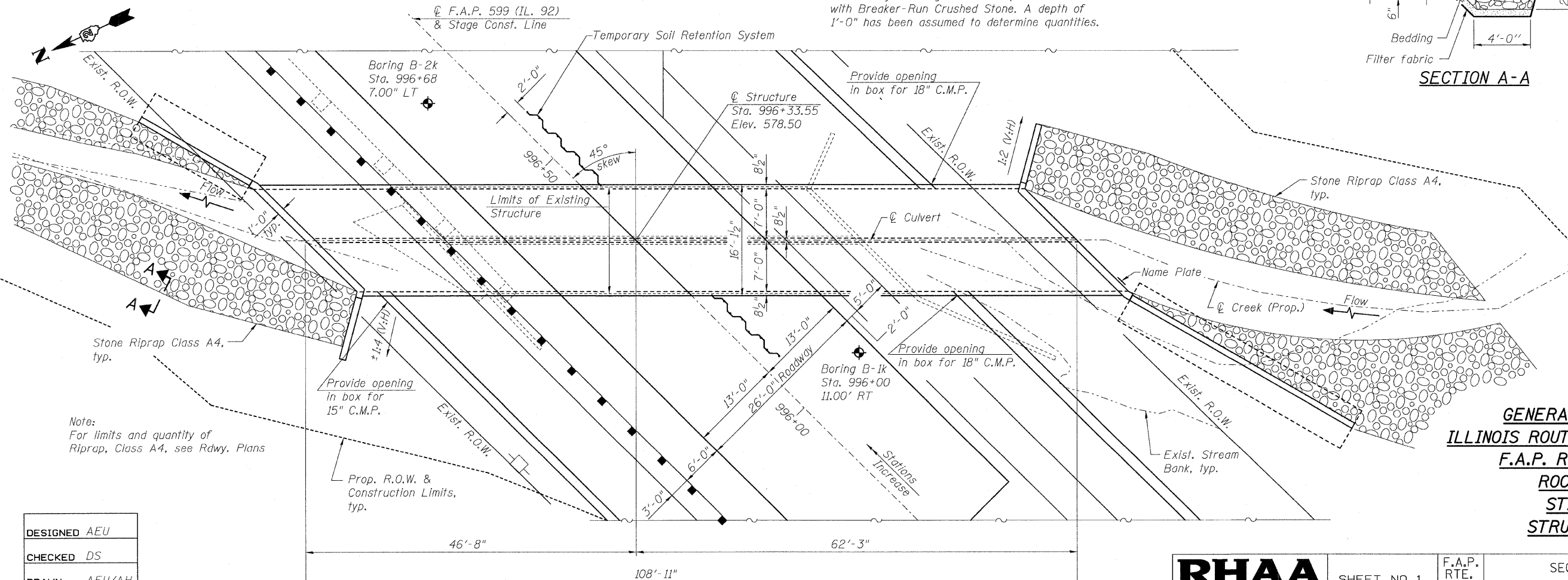
Remove unsuitable material to a depth as directed by the Engineer and replace with Breaker-Run Crushed Stone. A depth of 1'-0" has been assumed to determine quantities.



SECTION A-A



LOCATION SKETCH



PLAN



Andrew E. Underwager

Expires 11/30/2010
Date 1/22/2009

APPROVED
FOR STRUCTURAL ADEQUACY ONLY

Ralph E. Anderson
ENGINEER OF BRIDGES AND STRUCTURES

GENERAL PLAN & ELEVATION
ILLINOIS ROUTE 92 OVER UNNAMED CREEK
F.A.P. RT. 599 SEC. 103MFT-T
ROCK ISLAND COUNTY
STATION 996+33.55
STRUCTURE NO. 081-1116

DESIGNED	AEU
CHECKED	DS
DRAWN	AEU/AH
CHECKED	DS

RHAA
Robert H. Anderson & Associates, Inc.
Consulting Engineers
License No. 084-005281

SHEET NO. 1	F.A.P. RTE. 599	SECTION 103MFT-T	COUNTY ROCK ISLAND	TOTAL SHEETS 55	SHEET NO. 24
9 SHEETS	CONTRACT NO. 64737		ILLINOIS FED. AID PROJECT		