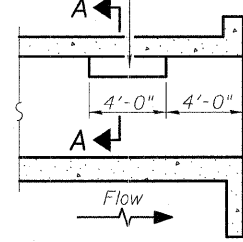
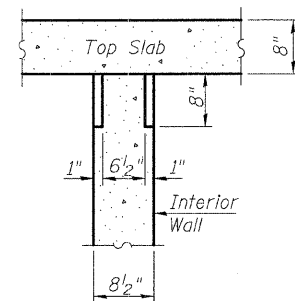


STATE OF ILLINOIS  
DEPARTMENT OF TRANSPORTATION

Notch formed by rough finished board attached to and removed with form work, each interior wall. (Do not chamfer).



**LONGITUDINAL SECTION**



**SECTION A-A**

**PHOEBE NESTING  
SITE DETAILS**  
(Downstream End Only)

**TOTAL BILL OF MATERIAL**

ITEM	UNIT	TOTAL
Removal and Disposal of Unsuitable Material	Cu. Yd.	45.5
Removal of Existing Structures No. 1	Each	1
Rock Excavation for Structures	Cu. Yd.	112.8
Name Plates	Each	1
Reinforcement Bars	Pound	47,260
Reinforcement Bars, Epoxy Coated	Pound	630
Bar Splicers	Each	88
Concrete Box Culverts	Cu. Yd.	215.2
Temporary Soil Retention System	Sq. Ft.	485
Breaker-Run Crushed Stone	Ton	74

**INDEX OF SHEETS**

1. General Plan & Elevation
2. General Data
3. Temporary Concrete Barrier for Stage Construction
4. Temporary Soil Retention System Details
5. Top Slab Plan
6. Bottom Slab Plan
7. Culvert Details
8. Bar Splicer Assembly Details
9. Soil Boring Logs

**GENERAL NOTES**

Reinforcement bars shall conform to the requirements of ASTM A 706 Gr 60. See Special Provisions.

Reinforcement bars designated (E) shall be epoxy coated.

Layout of the slope protection system may be varied in the field to suit ground conditions as directed by the Engineer.

Remove unsuitable soil below bottom of Culvert as directed by the Engineer and 2'-0" outside of the exterior walls of the box culvert. Cost shall be paid for as "REMOVAL AND DISPOSAL OF UNSUITABLE MATERIAL". Replace with "BREAKER-RUN CRUSHED STONE". A depth of 1'-0" has been assumed to determine quantities.

A precast concrete box culvert alternate will not be allowed at this site.

STATION 996+33.55  
BUILT 2009 BY  
STATE OF ILLINOIS  
F.A.P. RT. 599 SEC. 103MFT-T  
LOADING HS20  
STRUCTURE NO. 081-1116

**NAME PLATE**  
See Std. 515001

DESIGNED	AEU
CHECKED	DS
DRAWN	AEU/AH
CHECKED	DS

**GENERAL DATA**  
**STRUCTURE NO. 081-1116**

<b>RHAA</b> Robert H. Anderson & Associates, Inc. Consulting Engineers License No. J84-005281	SHEET NO. 2	F.A.P. RTE. 599	SECTION 103MFT-T	COUNTY ROCK ISLAND	TOTAL SHEETS 55	SHEET NO. 25
	9 SHEETS	CONTRACT NO. 64737			FED. ROAD DIST. NO.	ILLINOIS FED. AID PROJECT