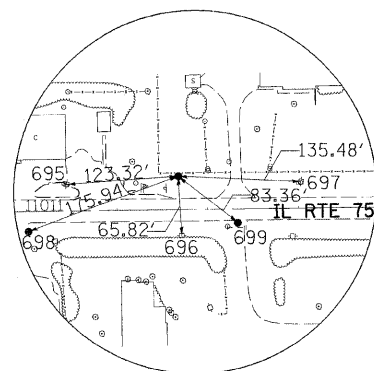
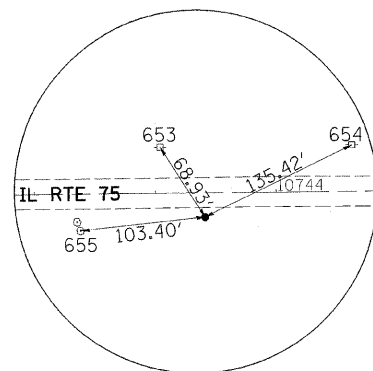


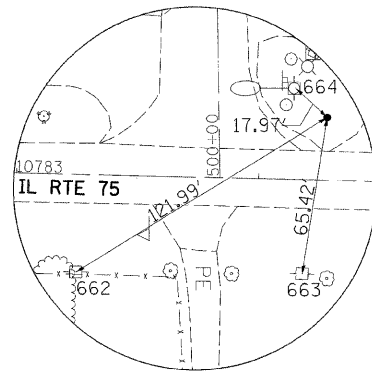
F.A.P. RTE.	SECTION	COUNTY	TOTAL SHEETS	SHEET NO.
505	111RS-4, 111BR-1, Yc-15d-RS-1, & (W-15d)T-1	STEPHENSON & WINNEBAGO	335	49
STA.		TO STA.		
FED. ROAD DIST. NO. 2		ILLINOIS	FED. AID PROJECT	
CONTRACT NO. 64970				



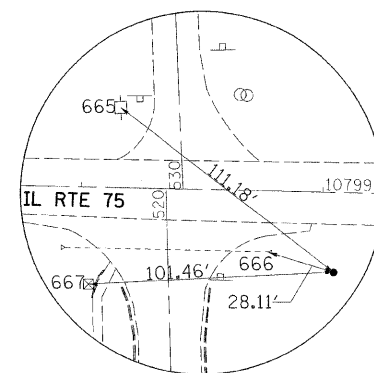
HORIZONTAL CONTROL POINT  
NO. 91053



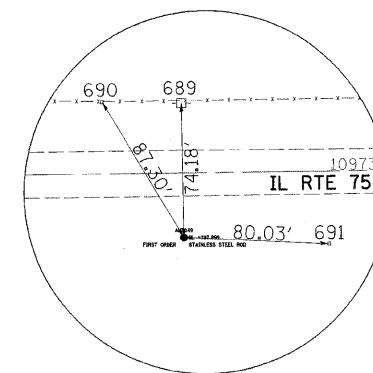
HORIZONTAL CONTROL POINT  
NO. 900108



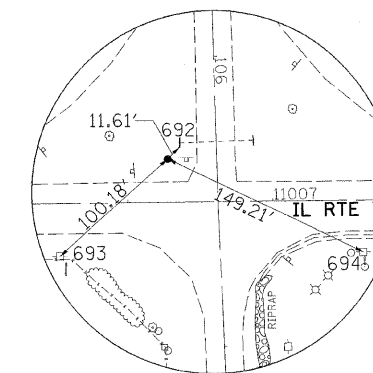
HORIZONTAL CONTROL POINT  
NO. 900115



HORIZONTAL CONTROL POINT  
NO. 900118



D2-NETWORK MONUMENT  
NO. 900138



HORIZONTAL CONTROL POINT  
NO. 900143

PLOT DATE = 3/3/2009  
FILE NAME = k:\11198800\11\_75\_3p\_east\ceadd\design\198801\_H\C08.dgn  
PLOT SCALE = 1:2500  
PLOT NAME = 198801  
MODEL = Default

REVISIONS	
NAME	DATE

ILLINOIS DEPARTMENT OF TRANSPORTATION  
F.A.P. ROUTE 505 (IL 75)  
**ILLINOIS ROUTE 75  
HORIZONTAL & VERTICAL  
CONTROL SHEETS**

SCALE: VERT. HORIZ.  
DATE: 3/3/09

DRAWN BY MTH  
CHECKED BY SPF