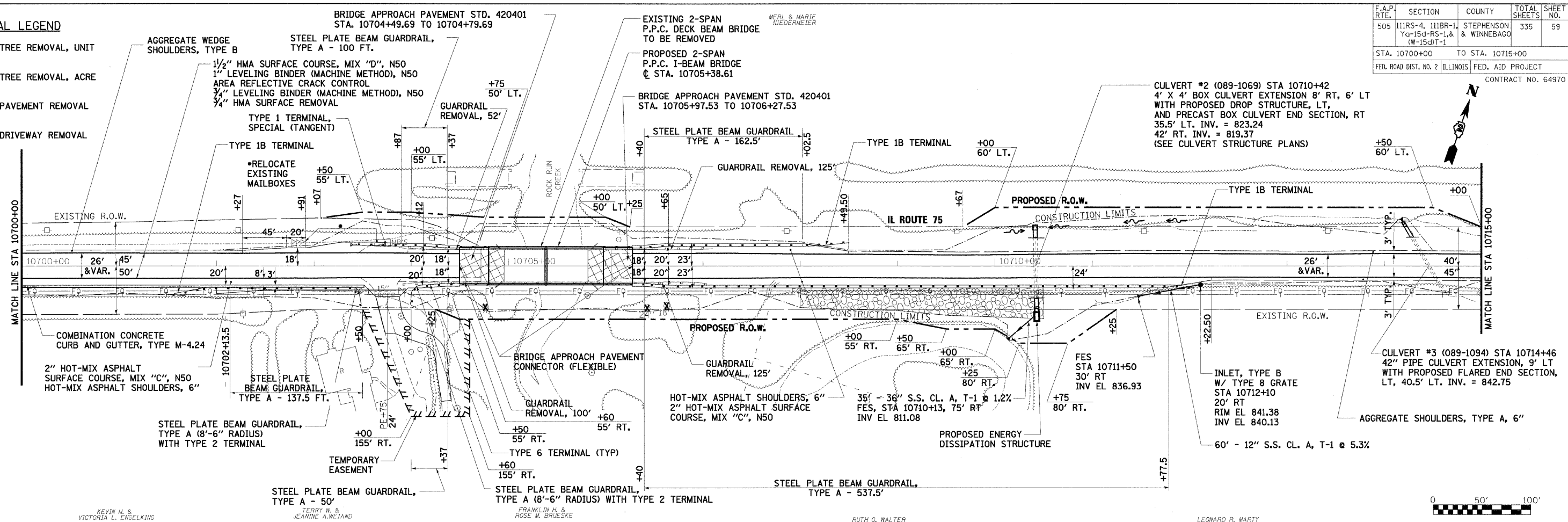


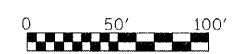
F.A.P. RTE.	SECTION	COUNTY	TOTAL SHEETS	SHEET NO.
505	111RS-4, 111BR-1, Yg-15d-RS-1, & (W-15d)T-1	STEPHENSON & WINNEBAGO	335	59
STA. 10700+00		TO STA. 10715+00		
FED. ROAD DIST. NO. 2		ILLINOIS		FED. AID PROJECT
CONTRACT NO. 64970				

REMOVAL LEGEND

- TREE REMOVAL, UNIT
- TREE REMOVAL, ACRE
- PAVEMENT REMOVAL
- DRIVEWAY REMOVAL



KEVIN M. & VICTORIA L. ENGELKING
 TERRY W. & JEANINE A. WEIAND
 FRANKLIN H. & ROSE M. BRUESKE
 RUTH O. WALTER
 LEONARD R. MARTY

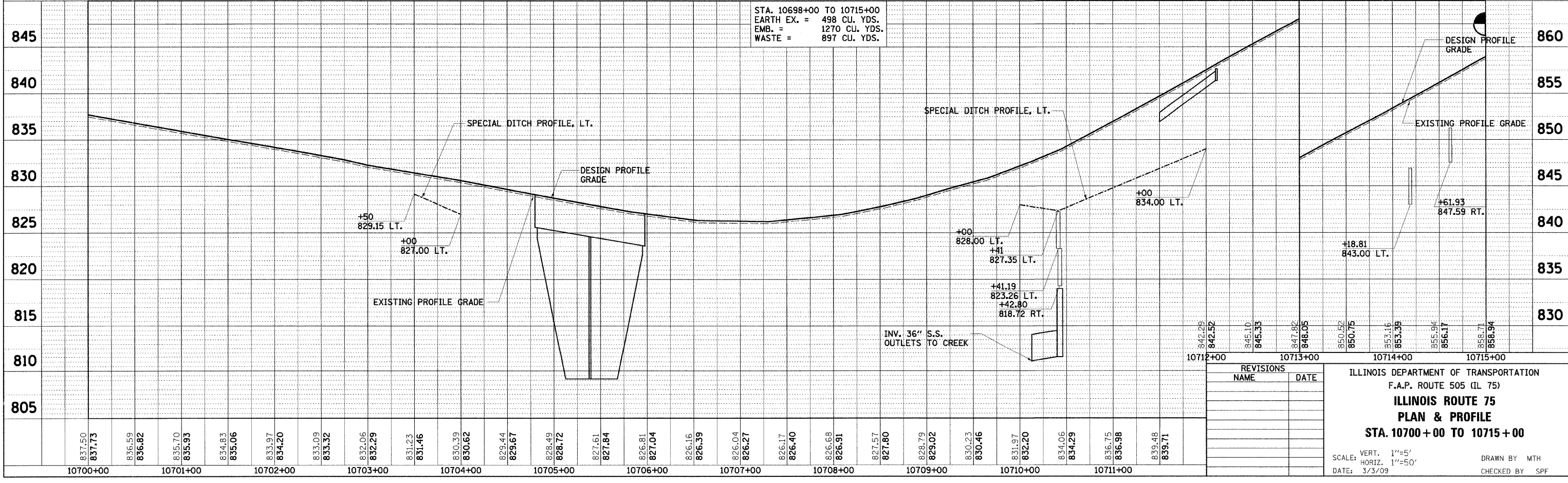


DATE	BY

DATE	BY

PLOT DATE = 2/12/2009
 FILE NAME = K:\1115800\11175_3P EasrCAD\Design\1115800_Plan06.dgn
 PLOT SCALE = 1/8"=1'-0"
 USER NAME = bbruzell
 MODEL = Default

STA. 10698+00 TO 10715+00
 EARTH EX. = 498 CU. YDS.
 EMB. = 1270 CU. YDS.
 WASTE = 897 CU. YDS.



REVISIONS	
NAME	DATE

ILLINOIS DEPARTMENT OF TRANSPORTATION
 F.A.P. ROUTE 505 (IL 75)
ILLINOIS ROUTE 75
PLAN & PROFILE
STA. 10700+00 TO 10715+00
 SCALE: VERT. 1"=5'
 DATE: 3/3/09 HORIZ. 1"=50'
 DRAWN BY MTH
 CHECKED BY SPF

10700+00	837.50	837.73	836.59	836.82	835.70	835.93	834.83	835.06	833.97	834.20	833.09	833.32	832.06	832.29	831.23	831.46	830.39	830.62	829.44	829.67	828.49	828.72	827.61	827.84	826.81	827.04	826.16	826.39	826.04	826.27	826.17	826.40	826.68	826.91	827.57	827.80	828.79	829.02	830.23	830.46	831.97	832.20	834.06	834.29	836.75	836.98	839.48	839.71
----------	--------	--------	--------	--------	--------	--------	--------	--------	--------	--------	--------	--------	--------	--------	--------	--------	--------	--------	--------	--------	--------	--------	--------	--------	--------	--------	--------	--------	--------	--------	--------	--------	--------	--------	--------	--------	--------	--------	--------	--------	--------	--------	--------	--------	--------	--------	--------	--------