

REMOVAL LEGEND

- TREE REMOVAL, UNIT
- TREE REMOVAL, ACRE
- PAVEMENT REMOVAL
- DRIVEWAY REMOVAL
- PAVEMENT BREAKING

2" HOT-MIX ASPHALT SURFACE COURSE, MIX "C", N50
HOT-MIX ASPHALT SHOULDERS, 6"

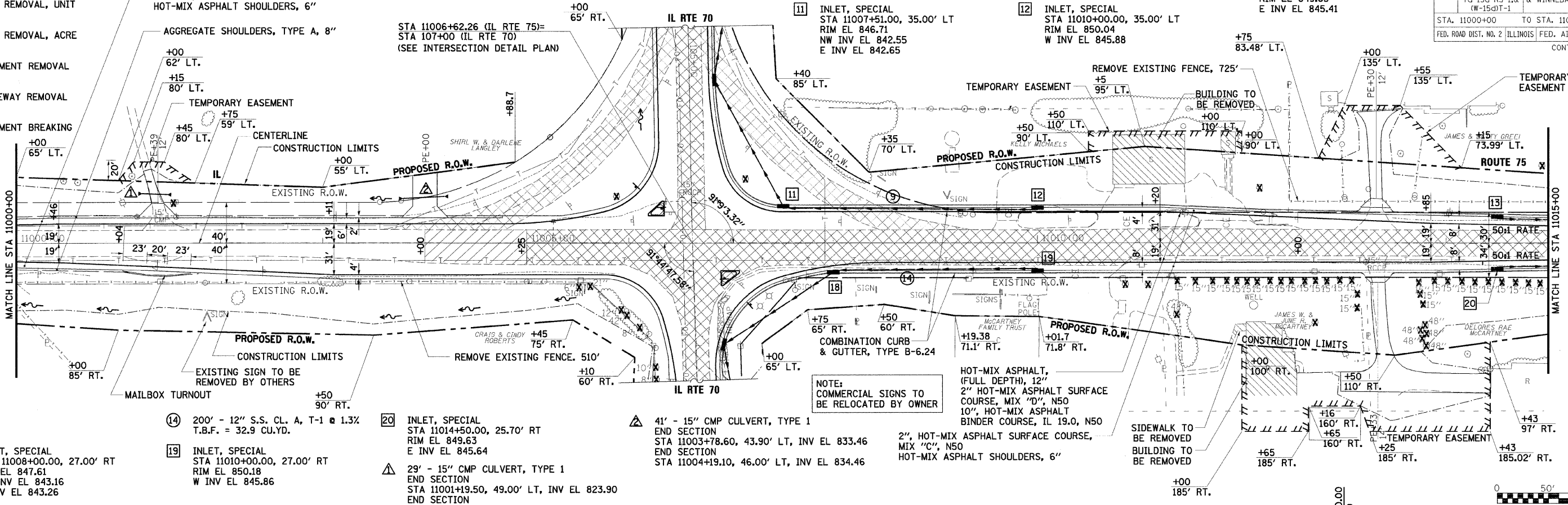
AGGREGATE SHOULDERS, TYPE A, 8"

STA 11006+62.26 (IL RTE 75)=
STA 107+00 (IL RTE 70)
(SEE INTERSECTION DETAIL PLAN)

⑨ 249' - 12" S.S. CL. A, T-1 @ 1.3%
T.B.F. = 26.4 CU.YD.

⑬ INLET, SPECIAL
STA 11014+50.00, 25.70' LT
RIM EL 849.63
E INV EL 845.41

F.A.P. RTE.	SECTION	COUNTY	TOTAL SHEETS	SHEET NO.
505	111RS-4, 111BR-1, Ya-15d-RS-1, & (W-15d)T-1	STEPHENSON & WINNEBAGO	335	75
STA. 11000+00		TO STA. 11015+00		
FED. ROAD DIST. NO. 2 ILLINOIS FED. AID PROJECT				
CONTRACT NO. 64970				



⑱ INLET, SPECIAL
STA 11008+00.00, 27.00' RT
RIM EL 847.61
SW INV EL 843.16
E INV EL 843.26

⑲ INLET, SPECIAL
STA 11010+00.00, 27.00' RT
RIM EL 850.18
W INV EL 845.86

⑳ INLET, SPECIAL
STA 11014+50.00, 25.70' RT
RIM EL 849.63
E INV EL 845.64

⑳ 29' - 15" CMP CULVERT, TYPE 1
END SECTION
STA 11001+19.50, 49.00' LT, INV EL 823.90
END SECTION
STA 11001+50.10, 47.90' LT, INV EL 825.16

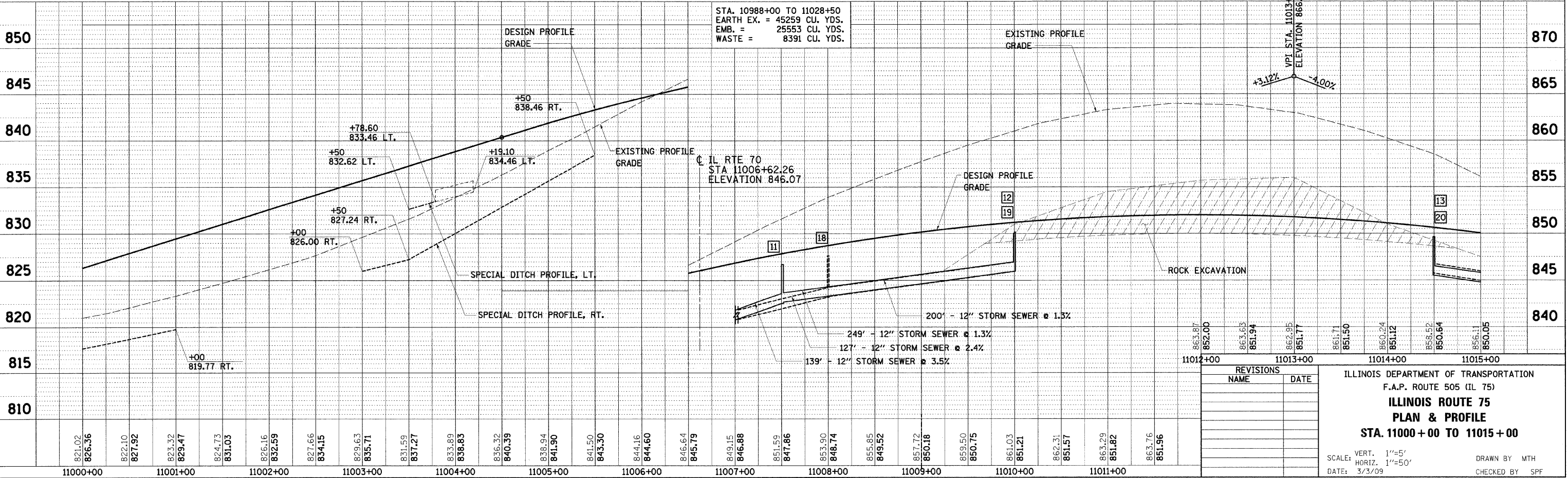
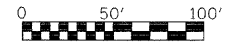
⑳ 41' - 15" CMP CULVERT, TYPE 1
END SECTION
STA 11003+78.60, 43.90' LT, INV EL 833.46
END SECTION
STA 11004+19.10, 46.00' LT, INV EL 834.46

NOTE:
COMMERCIAL SIGNS TO
BE RELOCATED BY OWNER

HOT-MIX ASPHALT,
(FULL DEPTH), 12"
2" HOT-MIX ASPHALT SURFACE
COURSE, MIX "D", N50
10", HOT-MIX ASPHALT
BINDER COURSE, IL 19.0, N50

2", HOT-MIX ASPHALT SURFACE COURSE,
MIX "C", N50
HOT-MIX ASPHALT SHOULDERS, 6"

SIDWALK TO BE REMOVED
BUILDING TO BE REMOVED



REVISIONS	NAME	DATE

ILLINOIS DEPARTMENT OF TRANSPORTATION
F.A.P. ROUTE 505 (IL 75)
ILLINOIS ROUTE 75
PLAN & PROFILE
STA. 11000 +00 TO 11015 +00

SCALE: VERT. 1"=5'
HORIZ. 1"=50'
DATE: 3/3/09

DRAWN BY MTH
CHECKED BY SPF

DATE	BY

DATE	BY

FILE NAME: k:\11198800\1175_3p_east\add\design\198800_Plan19.dgn
PLOT SCALE: 1"=50'
USER NAME: JTreacy
MODEL: Default