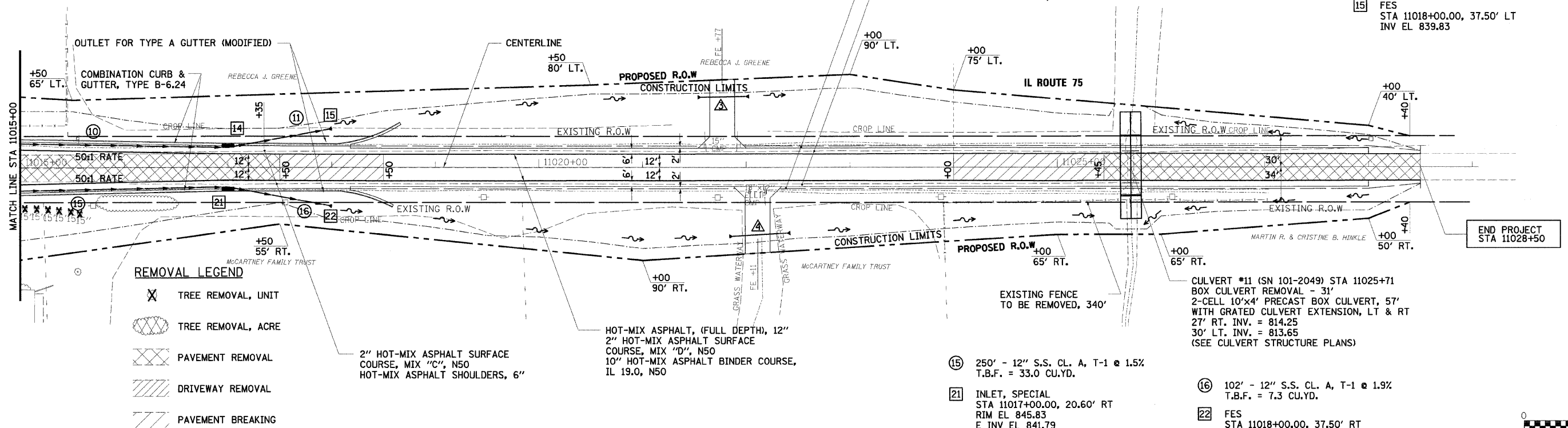


F.A.P. RTE.	SECTION	COUNTY	TOTAL SHEETS	SHEET NO.
505	111RS-4, 111BR-1, Yg-15d-RS-1, & (W-15d)T-1	STEPHENSON & WINNEBAGO	335	76
STA. 11015+00		TO STA. 11028+50		
FED. ROAD DIST. NO. 2		ILLINOIS FED. AID PROJECT		CONTRACT NO. 64970

- △ 42' - 15" CMP CULVERT, TYPE 1
END SECTION
STA 11021+56.80, 68.10' LT, INV EL 820.48
END SECTION
STA 11021+98.80, 69.00' LT, INV EL 818.70
- △ 51' - 15" CMP CULVERT, TYPE 1
END SECTION
STA 11021+87.50, 66.50' RT, INV EL 819.65
END SECTION
STA 11022+38.60, 63.60' RT, INV EL 818.70

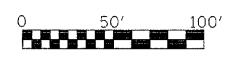
- ⑩ 250' - 12" S.S. CL. A, T-1 @ 1.4%
T.B.F. = 33.0 CU.YD.
- ⑭ INLET, SPECIAL
STA 11017+00.00, 20.90' LT
RIM EL 845.81
E INV EL 841.81
W INV EL 841.91
- ⑪ 102' - 12" S.S. CL. A, T-1 @ 1.9%
T.B.F. = 5.7 CU.YD.
- ⑮ FES
STA 11018+00.00, 37.50' LT
INV EL 839.83



REMOVAL LEGEND

- ✕ TREE REMOVAL, UNIT
- ⊗ TREE REMOVAL, ACRE
- ▨ PAVEMENT REMOVAL
- ▧ DRIVEWAY REMOVAL
- ▩ PAVEMENT BREAKING

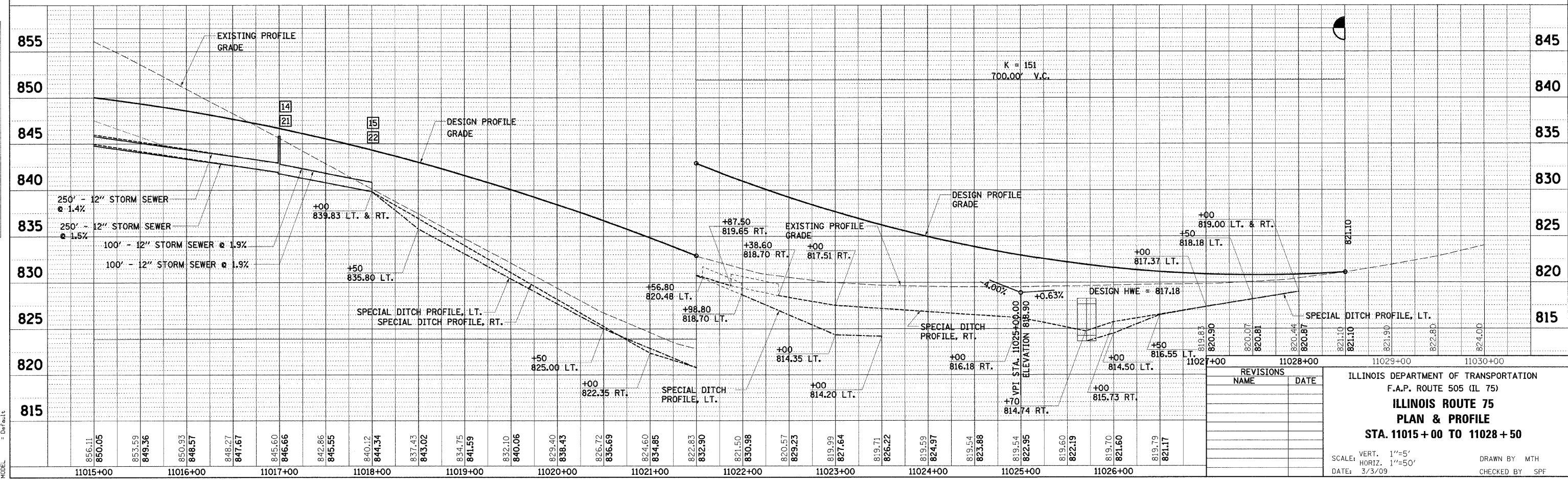
- ⑮ 250' - 12" S.S. CL. A, T-1 @ 1.5%
T.B.F. = 33.0 CU.YD.
- ⑰ 102' - 12" S.S. CL. A, T-1 @ 1.9%
T.B.F. = 7.3 CU.YD.
- ⑱ INLET, SPECIAL
STA 11017+00.00, 20.60' RT
RIM EL 845.83
E INV EL 841.79
W INV EL 841.89
- ⑳ FES
STA 11018+00.00, 37.50' RT
INV EL 839.83



DATE	
BY	
PLAN	
NO.	
DATE	
BY	
PLAN	
NO.	

DATE	
BY	
PROFILE	
NO.	
DATE	
BY	
PROFILE	
NO.	

PLOT DATE = 3/3/2009
 FILE NAME = K:\11198800\1.75.3p.east\east\design\11028.dgn
 PLOT SCALE = 1"=50'
 USER NAME = JTracy
 MODEL = Default



REVISIONS	NAME	DATE

ILLINOIS DEPARTMENT OF TRANSPORTATION
 F.A.P. ROUTE 505 (IL 75)
ILLINOIS ROUTE 75
PLAN & PROFILE
STA. 11015 + 00 TO 11028 + 50

SCALE: VERT. 1"=5'
 HORIZ. 1"=50'
 DATE: 3/3/09

DRAWN BY MTH
 CHECKED BY SPF