

F.A.P. RTE.	SECTION	COUNTY	TOTAL SHEETS	SHEET NO.
505	111RS-4, 111BR-1, Yg-15d-RS-1, & (W-15d)T-1	STEPHENSON & WINNEBAGO	335	77
STA. 97+50		TO STA. 104+50		
FED. ROAD DIST. NO. 2		ILLINOIS FED. AID PROJECT		
CONTRACT NO. 64970				

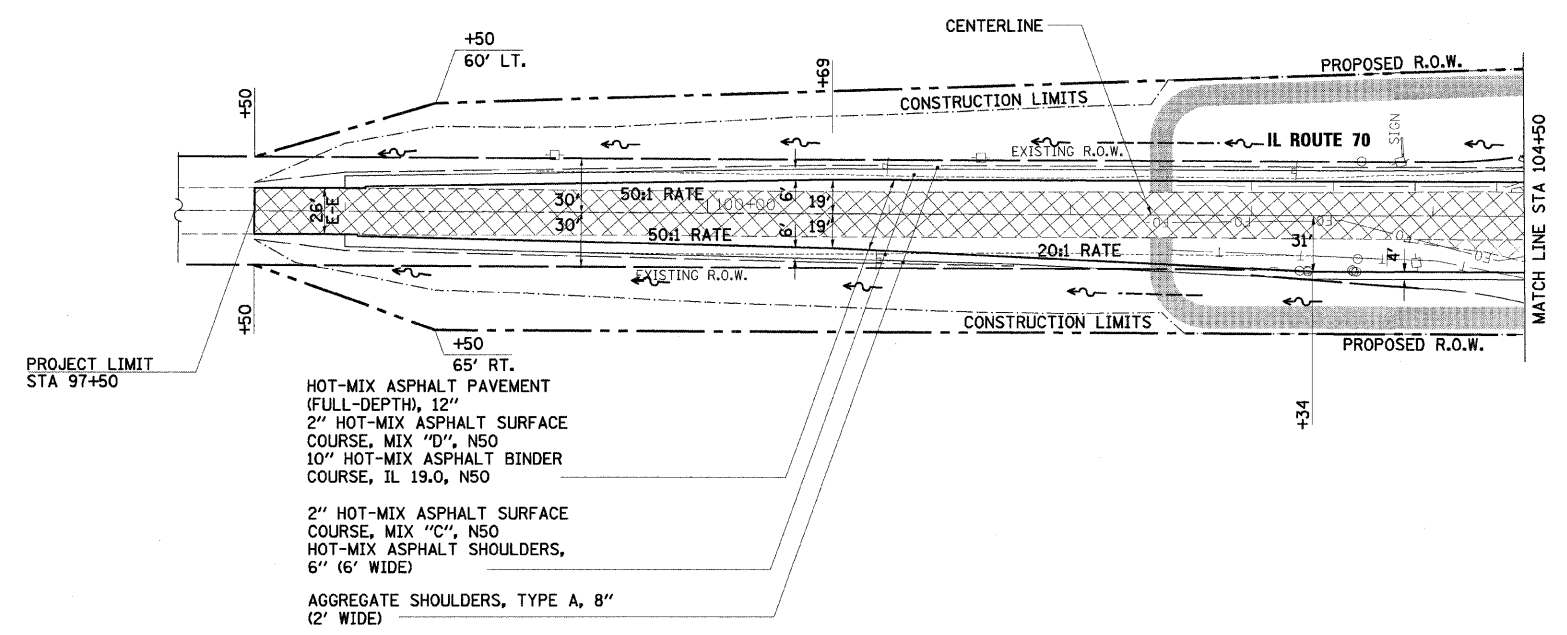


KELLY MICHAELS

DATE	BY

DATE	BY

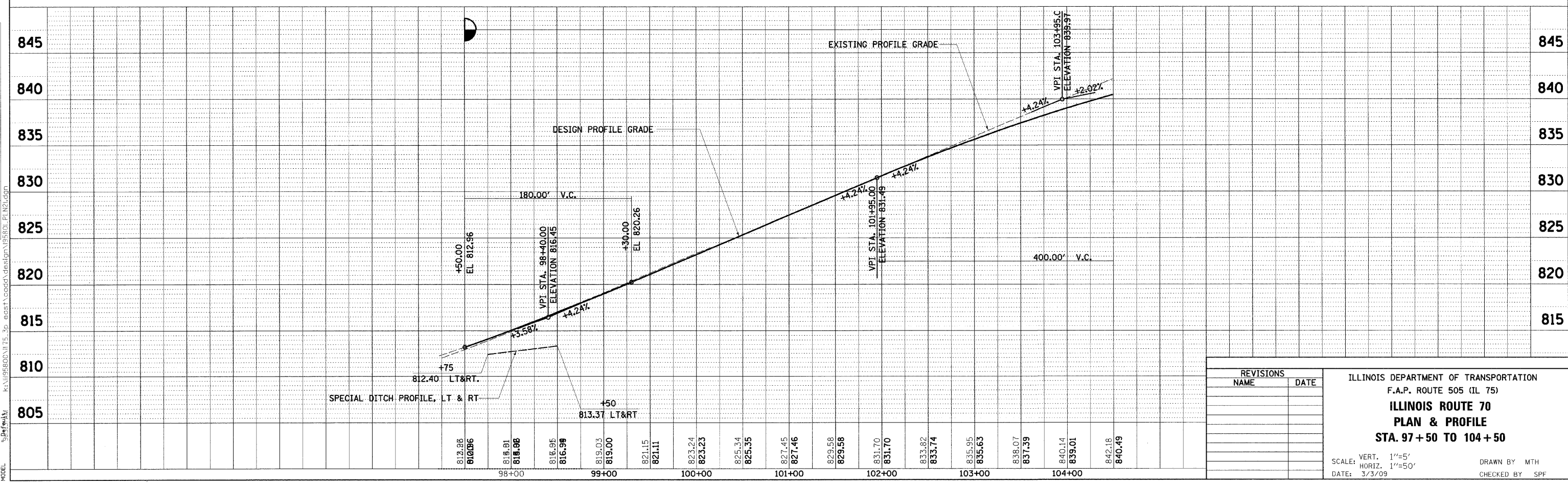
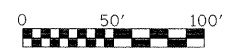
SURVEYED: _____
 ALIGNMENT CHECKED: _____
 NOTE BOOK NO.: _____
 PLAN FILE NAME: _____
 DATE: _____
 BY: _____
 SURVEYED: _____
 GRADES CHECKED: _____
 NOTE BOOK NO.: _____
 PROFILE FILE NAME: _____
 DATE: _____
 BY: _____
 PLOT DATE = 3/3/2009
 FILE NAME = k:\111RS-4\111BR-1\75-3p_east\cadd\design\198801_PLN21.dgn
 USER NAME = JTreney
 MODEL = S:\111RS-4



- REMOVAL LEGEND**
- TREE REMOVAL, UNIT
 - TREE REMOVAL, ACRE
 - PAVEMENT REMOVAL
 - DRIVEWAY REMOVAL
 - PAVEMENT BREAKING

HOT-MIX ASPHALT PAVEMENT (FULL-DEPTH), 12"
 2" HOT-MIX ASPHALT SURFACE COURSE, MIX "D", N50
 10" HOT-MIX ASPHALT BINDER COURSE, IL 19.0, N50
 2" HOT-MIX ASPHALT SURFACE COURSE, MIX "C", N50
 HOT-MIX ASPHALT SHOULDERS, 6" (6' WIDE)
 AGGREGATE SHOULDERS, TYPE A, 8" (2' WIDE)

SHIRL W. & DARLENE LANGLEY



REVISIONS	
NAME	DATE

ILLINOIS DEPARTMENT OF TRANSPORTATION
 F.A.P. ROUTE 505 (IL 75)
ILLINOIS ROUTE 70
PLAN & PROFILE
STA. 97+50 TO 104+50

SCALE: VERT. 1"=5'
 HORIZ. 1"=50'
 DATE: 3/3/09

DRAWN BY: MTH
 CHECKED BY: SPF