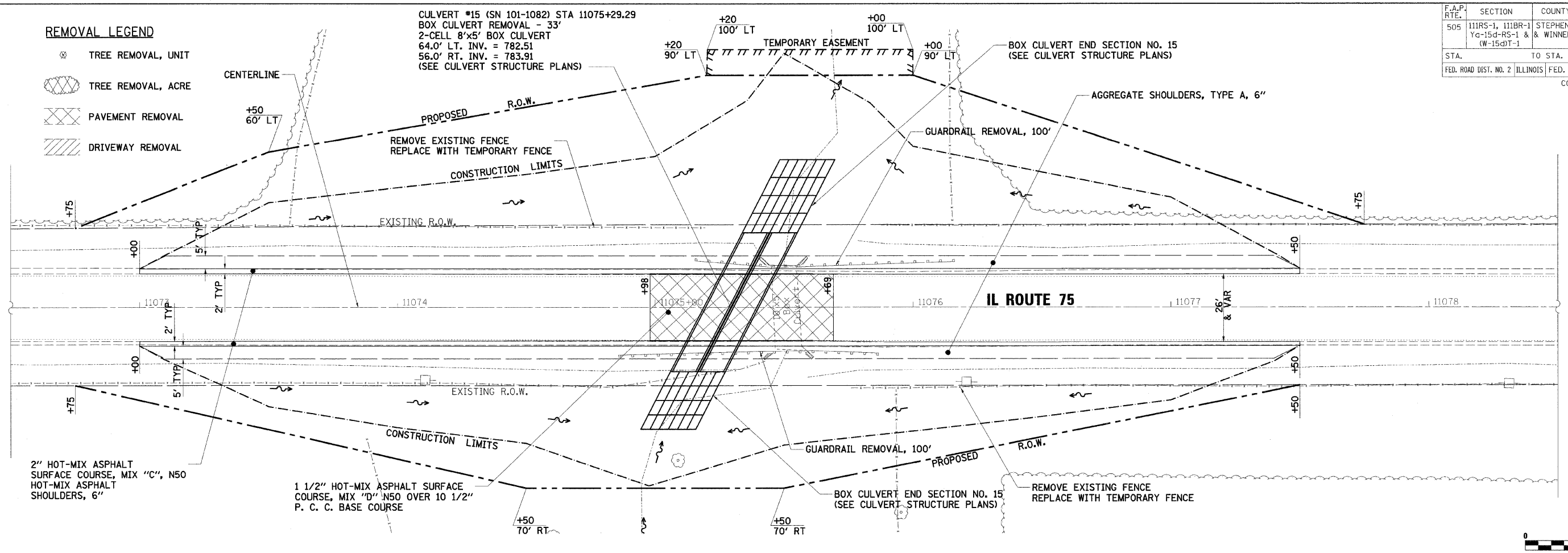


F.A.P. RTE.	SECTION	COUNTY	TOTAL SHEETS	SHEET NO.
505	111RS-1, 111BR-1 Yc-15d-RS-1 & (W-15d)T-1	STEPHENSON & WINNEBAGO	335	80
STA.		TO STA.		
FED. ROAD DIST. NO. 2 ILLINOIS FED. AID PROJECT				
CONTRACT NO. 64970				

REMOVAL LEGEND

- TREE REMOVAL, UNIT
- TREE REMOVAL, ACRE
- PAVEMENT REMOVAL
- DRIVEWAY REMOVAL

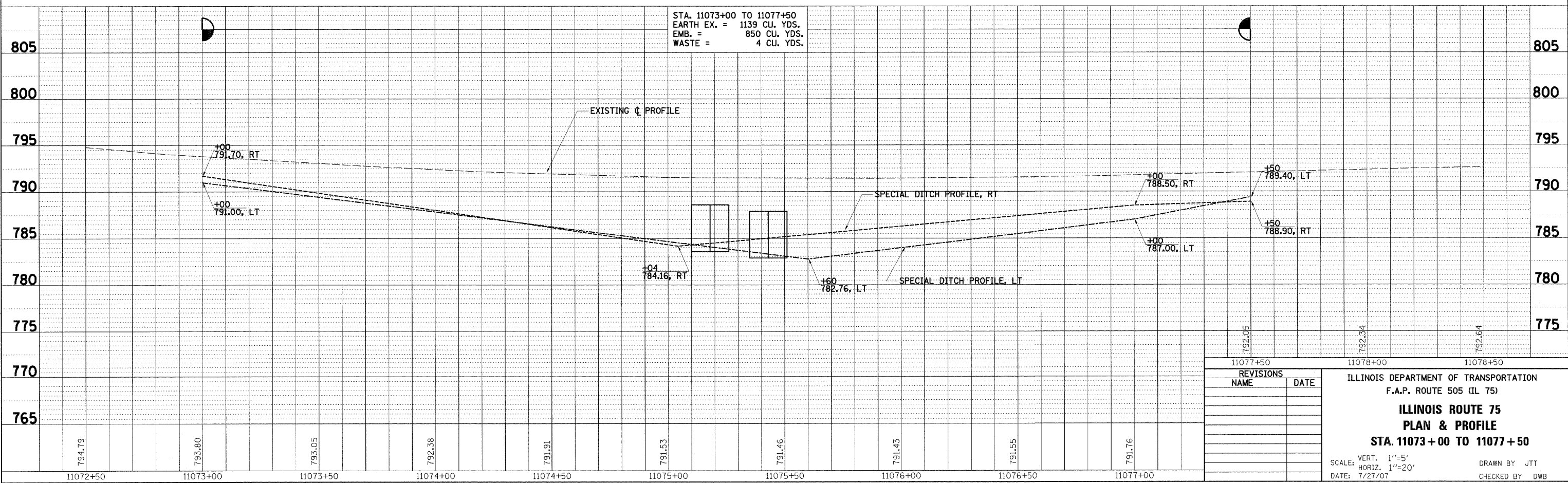
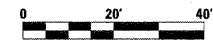
CULVERT #15 (SN 101-1082) STA 11075+29.29
 BOX CULVERT REMOVAL - 33'
 2-CELL 8'x5' BOX CULVERT
 64.0' LT. INV. = 782.51
 56.0' RT. INV. = 783.91
 (SEE CULVERT STRUCTURE PLANS)



2" HOT-MIX ASPHALT
 SURFACE COURSE, MIX "C", N50
 HOT-MIX ASPHALT
 SHOULDERS, 6"

1 1/2" HOT-MIX ASPHALT SURFACE
 COURSE, MIX "D" N50 OVER 10 1/2"
 P. C. C. BASE COURSE

STA. 11073+00 TO 11077+50
 EARTH EX. = 1139 CU. YDS.
 EMB. = 850 CU. YDS.
 WASTE = 4 CU. YDS.



REVISIONS	NAME	DATE

ILLINOIS DEPARTMENT OF TRANSPORTATION
 F.A.P. ROUTE 505 (IL 75)
ILLINOIS ROUTE 75
PLAN & PROFILE
STA. 11073+00 TO 11077+50
 SCALE: VERT. 1"=5'
 HORIZ. 1"=20'
 DATE: 7/27/07
 DRAWN BY: JTT
 CHECKED BY: DWB

DATE	
BY	
DESIGNED	
CHECKED	
IN CHARGE	
NO.	

DATE	
BY	
DESIGNED	
CHECKED	
IN CHARGE	
NO.	

3/3/2009 9:20:11 AM K:\11192914\Cadd\Design\1179214_Plan02.dgn