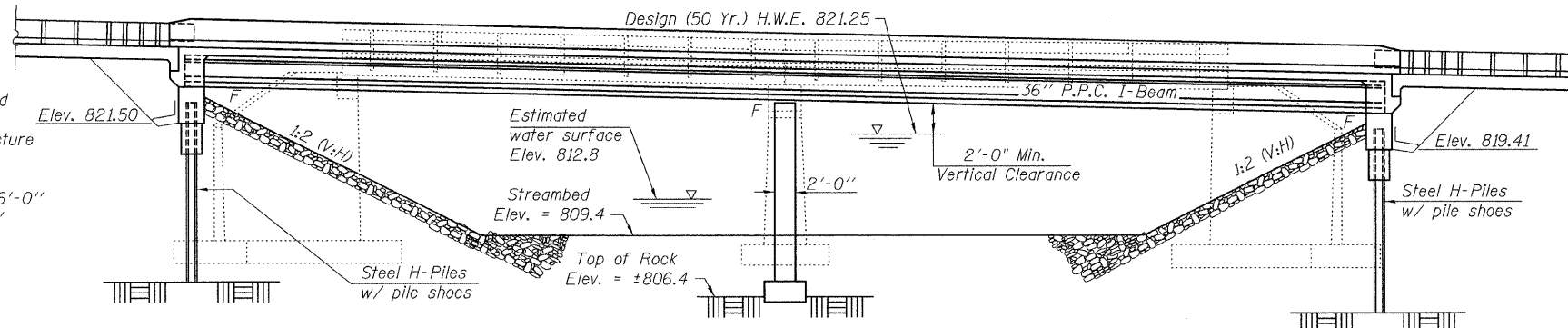


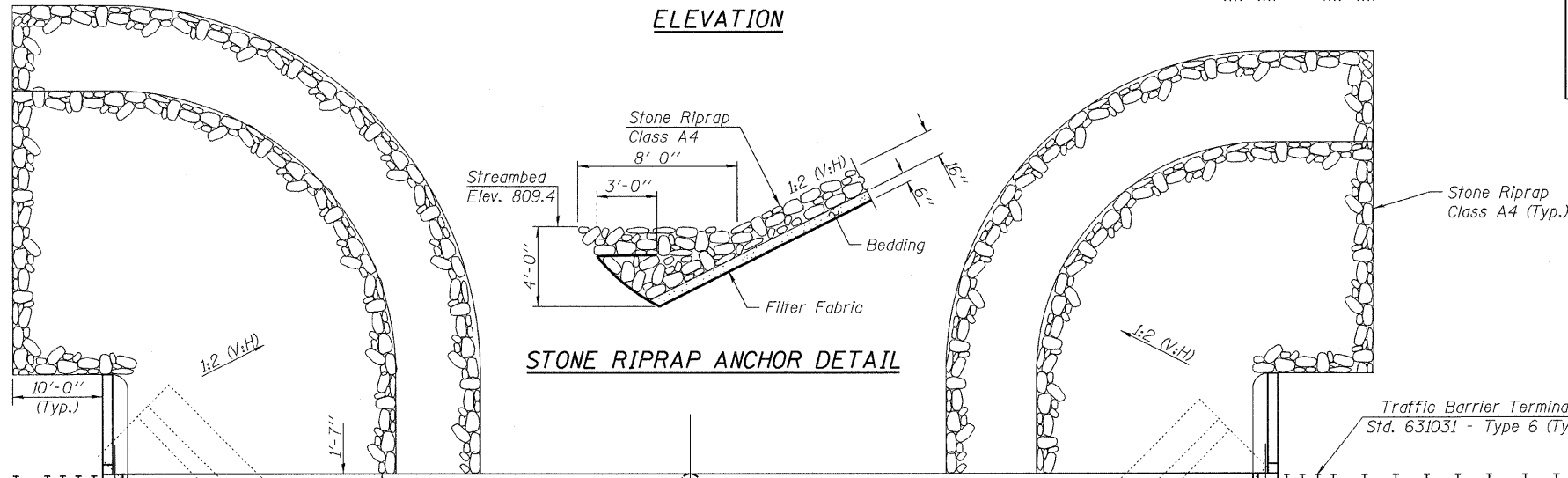
Bench Mark: Chiseled Square, Top of Southeast Wingwall, Sta. 10705+86.01, 18.3' Rt., Elev. 824.47

Existing Structure: Structure number 089-0040, built in 1928 as S.B.I. 75, Sec. 111B. Portions of the substructure and the superstructure were rebuilt in 1973. The rebuilt superstructure is a PPC deck beam bridge with a 5" concrete overlay and closed abutments. Two-span 86'-0" back to back abutments, 33'-0" out to out width. Traffic to be detoured.

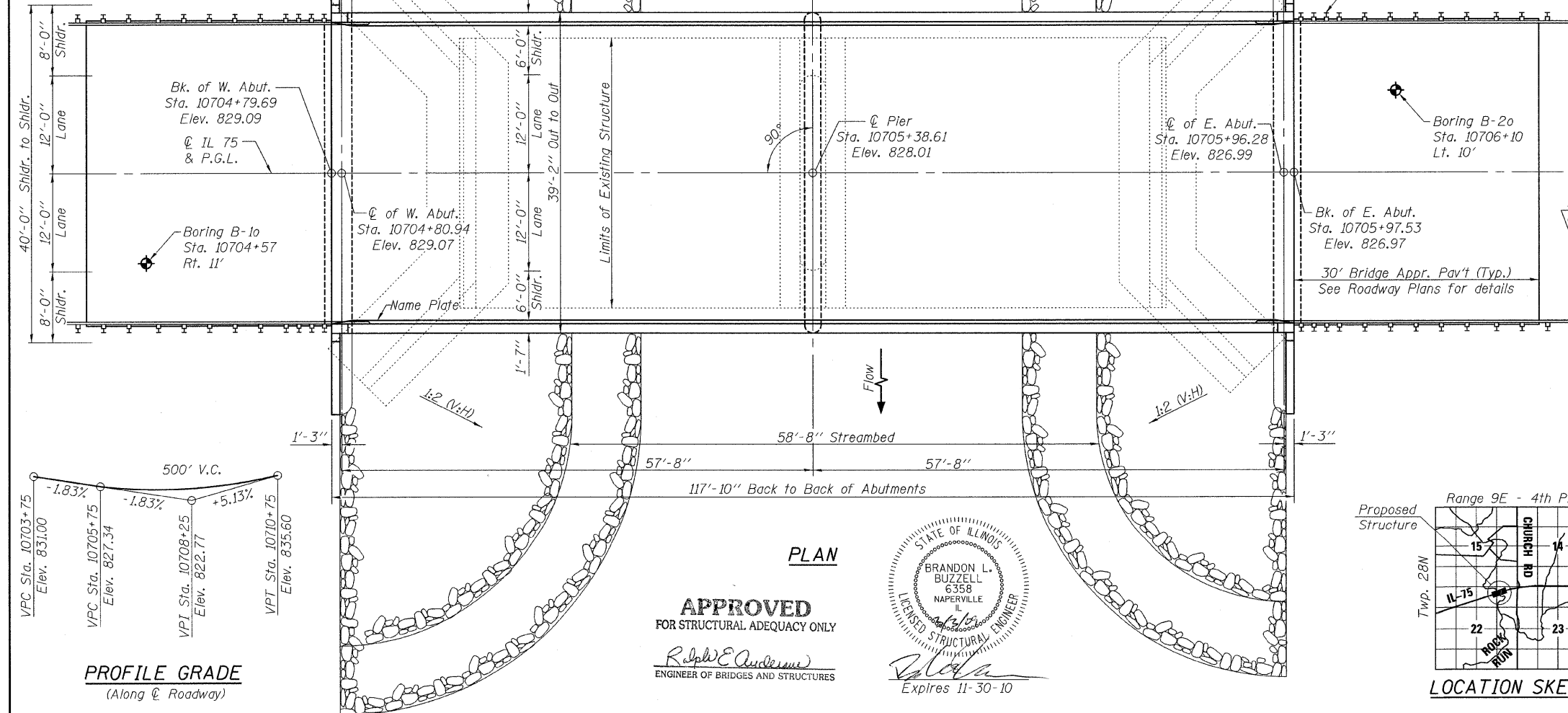
No Salvage.



ELEVATION



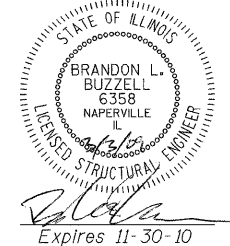
STONE RIPRAP ANCHOR DETAIL



PLAN

APPROVED FOR STRUCTURAL ADEQUACY ONLY

ENGINEER OF BRIDGES AND STRUCTURES



Design Scour Elevations		
West Abutment	Pier	East Abutment
824.6	806.4	822.6

ROUTE NO.	SECTION	COUNTY	SHEETS	SHEET	SHEET NO.
FAP 505	111B	STEPHENSON	335	117	18 SHEETS

Contract #64970

LOADING HS20-44

Allow 50#/sq. ft. for future wearing surface.

DESIGN SPECIFICATIONS

AASHTO 2002 Standard Specifications for Highway Bridges

DESIGN STRESSES

FIELD UNITS

$f'_c = 3,500$  psi  
 $f_y = 60,000$  psi (reinforcement)

PRECAST PRESTRESSED UNITS

$f'_c = 6,000$  psi  
 $f_{ci} = 5,000$  psi  
 $f'_s = 270,000$  psi ( $\frac{1}{2}$ "  $\phi$  low lax. strands)  
 $f_{si} = 201,960$  psi ( $\frac{1}{2}$ "  $\phi$  low lax. strands)

SEISMIC DATA

Seismic Performance Category (SPC) = A  
Bedrock Acceleration Coefficient (A) = 0.032g  
Site Coefficient (S) = 1.0

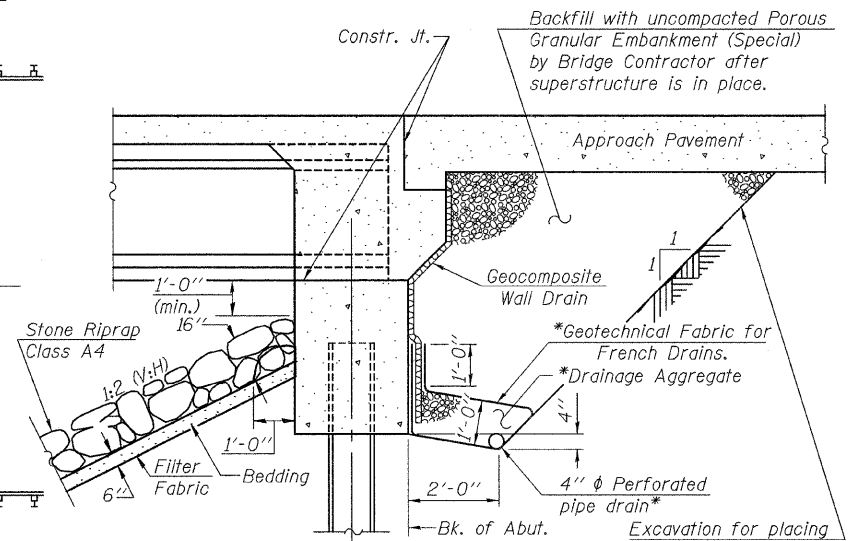
STATION 10705+38.61  
BUILT 20 BY  
STATE OF ILLINOIS  
F.A.P. RT. 505 SEC. 111B  
LOADING HS20  
STR. NO. 089-0084

NAME PLATE

See Std. 515001

WATERWAY INFORMATION

Flood	Freq. Yr.	Q C.F.S.	Opening Sq. Ft.		Nat. H.W.E.	Head - Ft.		Headwater El.	
			Exist.	Prop.		Exist.	Prop.	Exist.	Prop.
Design	10	2382	564	599	819.89	0.34	0.31	820.23	820.20
Base	50	3590	662	717	821.25	0.48	0.45	821.73	821.70
Overtopping	100	4092	701	762	821.74	0.53	0.49	822.27	822.23
Max. Calc.	500	5275	785	860	822.79	0.73	0.66	823.52	823.45

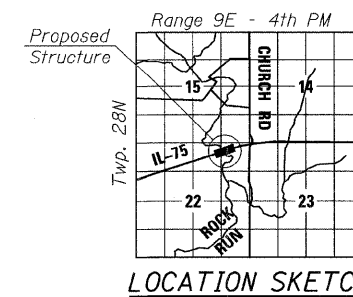


PIPE UNDERDRAIN AND RIPRAP DETAIL

\*Included in the cost of Pipe Underdrains for Structures, 4".

Note:

All drainage system components shall extend to 2'-0" from the end of each wingwall except an outlet pipe shall extend until intersecting with the side slopes. The pipes shall drain into concrete headwalls. (See Article 601.05 of the Standard Specifications and Highway Standard 601101).



LOCATION SKETCH



200 West Front Street  
Wheaton, IL 60187

ILLINOIS DEPARTMENT OF TRANSPORTATION

GENERAL PLAN AND ELEVATION

IL-75 OVER ROCK RUN CREEK  
FAP RTE 505 - SECTION 111B  
STEPHENSON COUNTY  
STATION 10705+38.61  
STRUCTURE NO. 089-0084

DATE: 3/03/2009

DRAWN BY JMT  
CHECKED BY JWJ