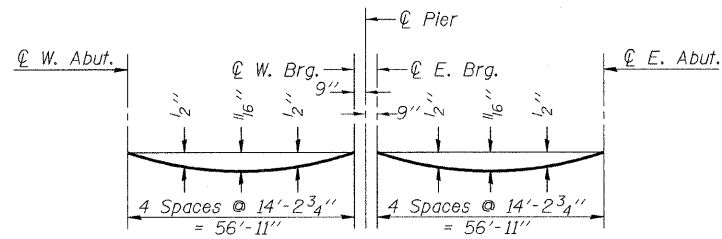


ROUTE NO.	SECTION	COUNTY	TOTAL SHEETS	SHEET NO.	SHEET NO. 3 18 SHEETS
FAP 505	111B	STEPHENSON	335	119	
FED. ROAD DIST. NO. 7	ILLINOIS	FED. AID PROJECT			

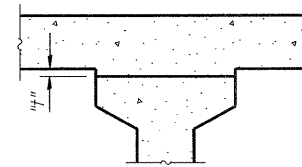
Contract #64970



DEAD LOAD DEFLECTION DIAGRAM
(Includes weight of concrete, excluding beams).

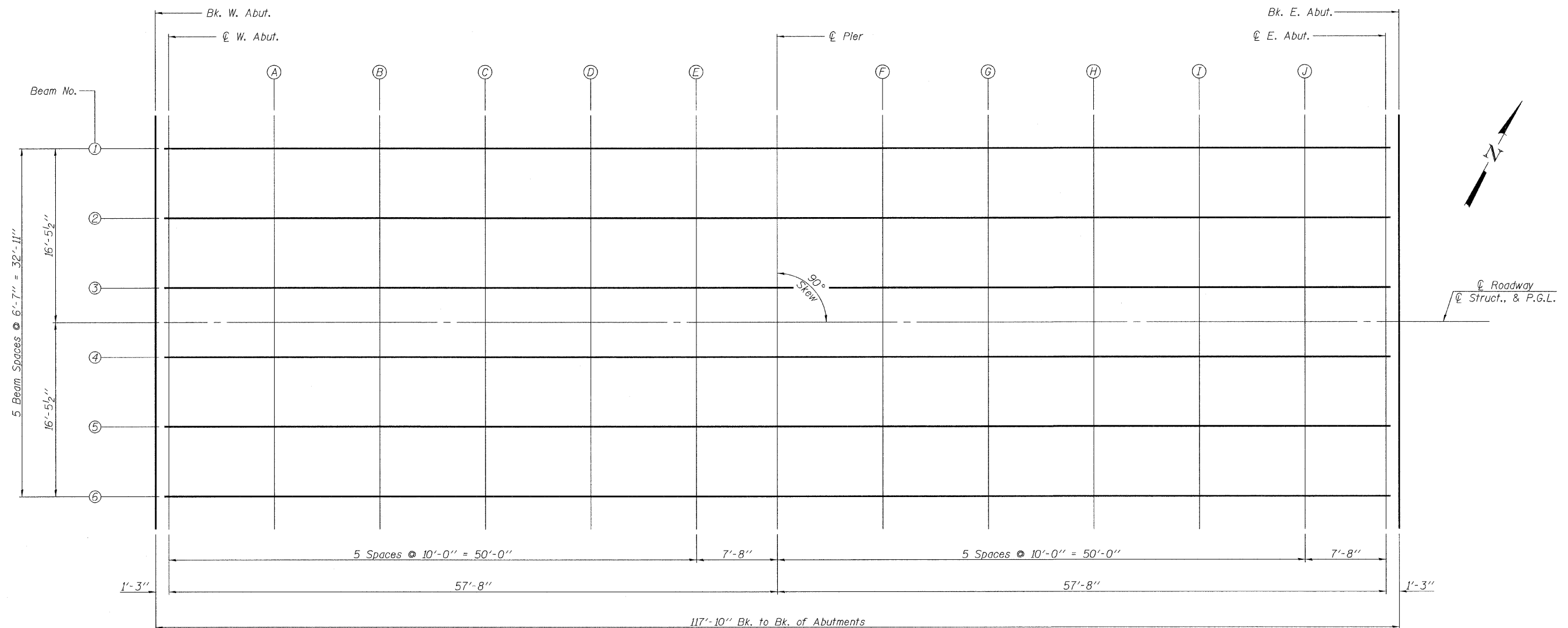
Note:

The above deflections are not to be used in the field if the engineer is working from the grade elevations adjusted for dead load deflections as shown on Sheet 4 of 18.



To determine "h": After all precast prestressed beams have been erected, elevations of the top flanges of the beams shall be taken at intervals shown below. These elevations subtracted from the "Theoretical Grade Elevations Adjusted for Dead Load Deflections" shown on Sheet 4 of 18, minus slab thickness, equals the fillet heights "h" above top flanges of beams.

FILLET HEIGHTS



PLAN

rjngroup
Excellence through Ownership
200 West Front Street
Wheaton, IL 60187

ILLINOIS DEPARTMENT OF TRANSPORTATION

TOP OF SLAB ELEVATIONS - I
IL-75 OVER ROCK RUN CREEK
FAP RTE 505 - SECTION 111B
STEPHENSON COUNTY
STATION 10705+38.61
STRUCTURE NO. 089-0084

DATE: 3/03/2009

DRAWN BY JMT
CHECKED BY WJV