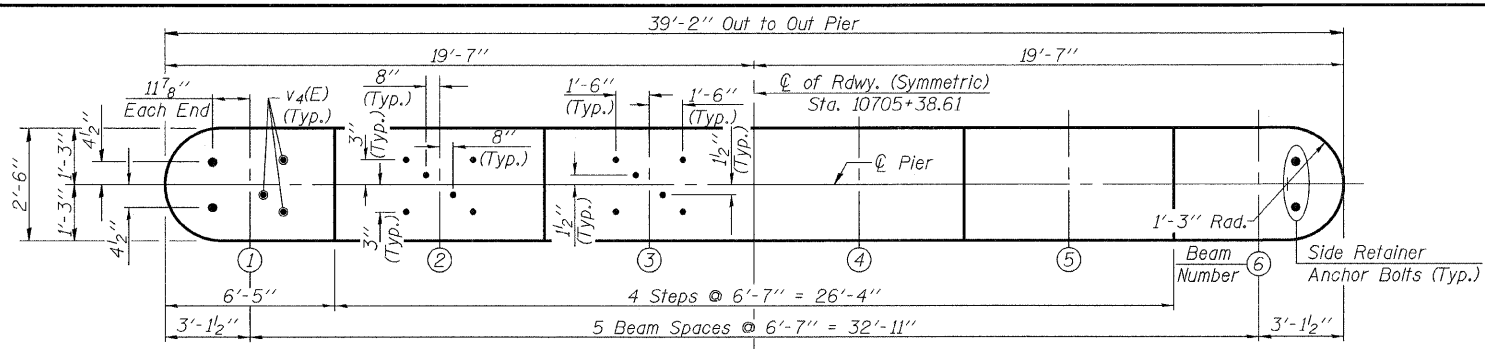
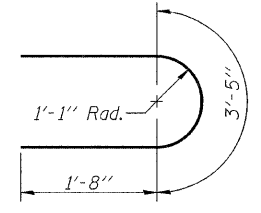


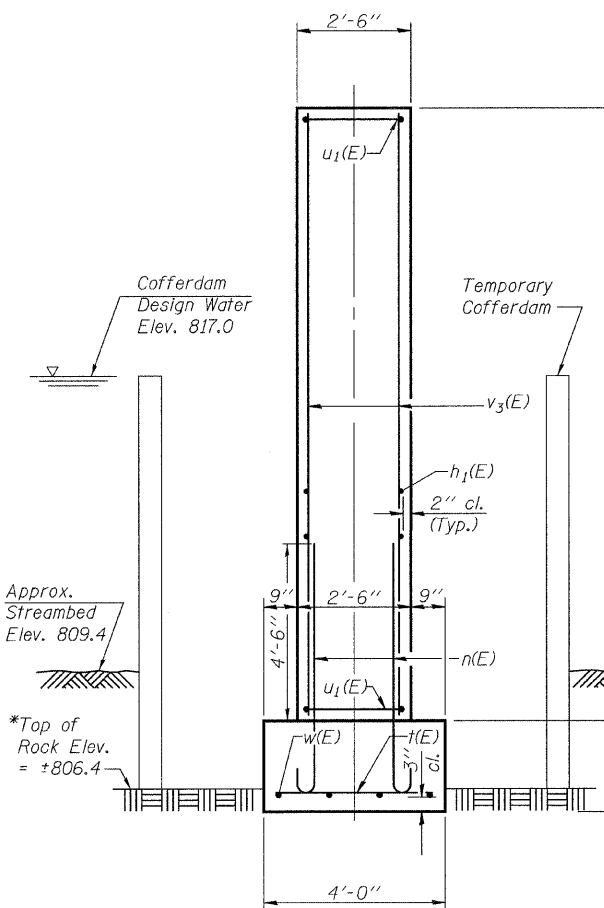
Notes: Space reinforcement in pier to miss anchor bolts.  
 Four steps monolithically with pier.  
 All edges shall have standard 3/4" chamfers.  
 See Sheet 9 of 18 for Anchor Bolt Installation.  
 See Sheet 9 of 18 for additional reinforcement and anchor bolt location detail.  
 Contractor shall submit a design of the cofferdam to the Engineer for approval.  
 Minimum bar lap for #4 bar = 1'-8".  
 Bars indicated thus 11x2-#4 etc. indicates 11 lines of bars with 2 lengths per line.



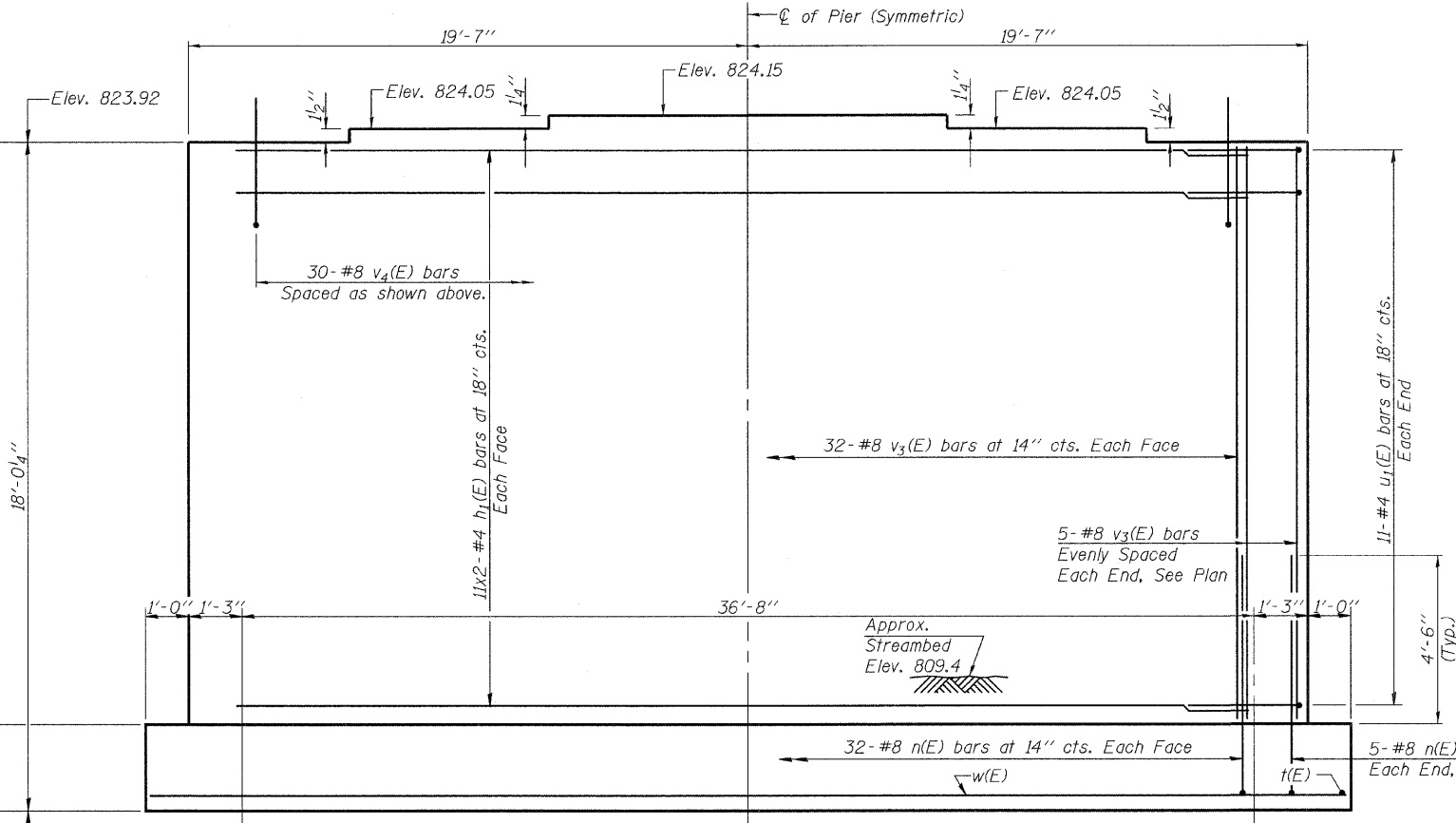
**TOP PLAN**



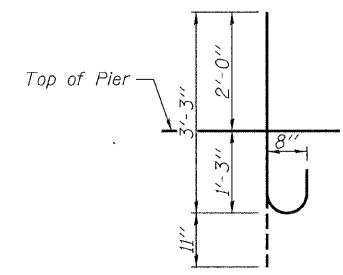
**BAR u<sub>1</sub>(E)**



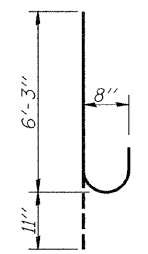
**END VIEW**



**ELEVATION**  
(Looking East)



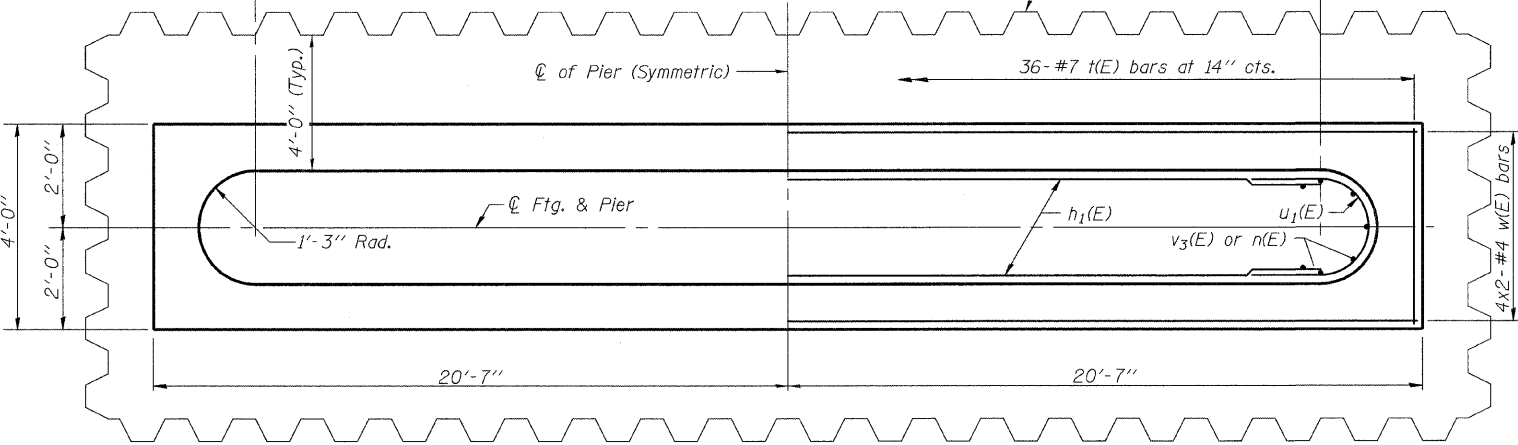
**BAR v<sub>4</sub>(E)**



**BAR n(E)**

**BILL OF MATERIAL**

Bar	No.	Size	Length	Shape
h <sub>1</sub> (E)	44	#4	19'-2"	—
n(E)	74	#8	7'-2"	U
t(E)	36	#7	3'-6"	—
u <sub>1</sub> (E)	22	#4	6'-9"	U
v <sub>3</sub> (E)	74	#8	15'-9"	—
v <sub>4</sub> (E)	30	#8	4'-2"	U
w(E)	8	#4	21'-2"	—
Concrete Structures			Cu. Yd.	70
Reinforcement Bars, Epoxy Coated			Pound	5900
Cofferdam Excavation			Cu. Yd.	55
Rock Excavation for Structures			Cu. Yd.	3



**FOOTING PLAN**

Maximum Bearing Pressure = 5.9 ksf

\* Indicated bottom of footing elevations are based on available subsurface data, the bottom of footing should be set a minimum of 6" into sound rock. The Contractor shall delay ordering the Pier reinforcement until the rock elevation can be verified. If the total height of the wall is increased by more than 2 feet from that shown on the plans due to the encountered rock elevation, the wall and footing should be redesigned.

**rjngroup**  
 Excellence through Ownership  
 200 West Front Street  
 Wheaton, IL 60187

ILLINOIS DEPARTMENT OF TRANSPORTATION  
 PIER DETAILS  
 IL-75 OVER ROCK RUN CREEK  
 FAP RTE 505 - SECTION 111B  
 STEPHENSON COUNTY  
 STATION 10705+38.61  
 STRUCTURE NO. 089-0084  
 DATE: 3/03/2009  
 DRAWN BY JMT  
 CHECKED BY WJV