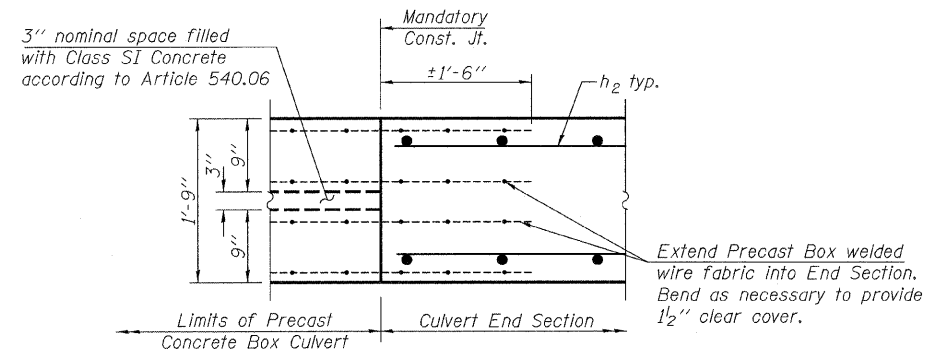
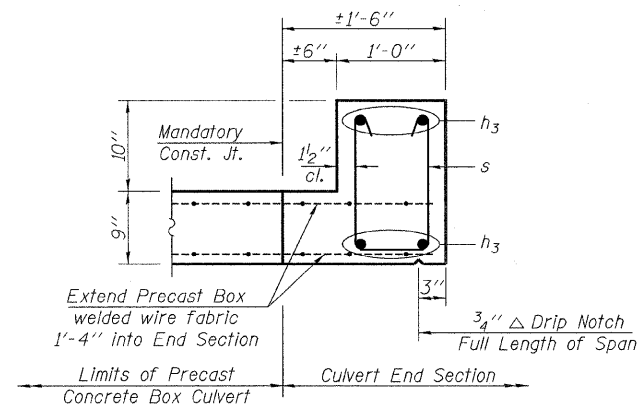


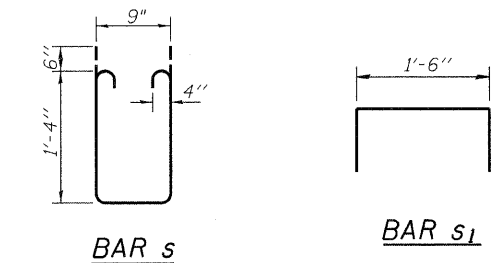
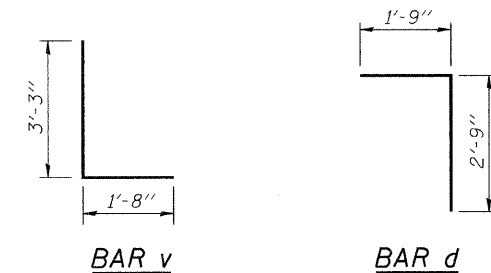
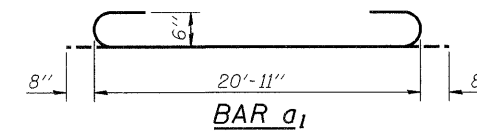
**111RS-4, 111BR-1, Ya-15d-RS-1, & (W-15d)T-1
Contract # 64970



DETAIL 1

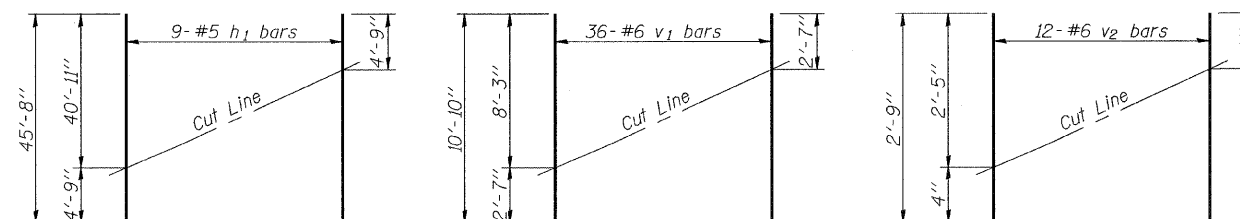


SECTION C-C



**END SECTION
BILL OF MATERIAL**

Bar	No.	Size	Length	Shape
a	42	#5	20'-11"	—
a1	42	#5	22'-3"	—
d	22	#5	4'-6"	└
h	44	#5	40'-11"	—
h1	27	#5	45'-8"	—
h2	6	#5	39'-4"	—
h3	7	#6	20'-11"	—
s	22	#4	4'-5"	□
s1	48	#4	3'-0"	└
v	200	#6	4'-11"	L
v1	108	#6	10'-10"	—
v2	12	#6	2'-9"	—
v3	12	#6	7'-5"	—
Reinforcement Bars			Pound	9,250
Concrete Structures			Cu. Yd.	52.2



FIELD CUTTING DIAGRAMS

Order bars full length. Cut as shown and use remainder of bars in opposite face (h1, v1) or opposite wingwall (v2).

NOTE

See Sheet 1 of 3 for General Notes.

rjngroup

Excellence through Ownership

200 West Front Street
Wheaton, IL 60187

ILLINOIS DEPARTMENT OF TRANSPORTATION
GRATED CULVERT EXTENSION NO. 8
IL-75 OVER TRIBUTARY TO PECATONICA RIVER
FAP RTE 505 - SECTION
111RS-4, 111BR-1, Ya-15d-RS-1, & (W-15d)T-1
WINNEBAGO COUNTY
STATION 10968+79
STRUCTURE NO. 101-2048

DATE: 3/03/2009

DRAWN BY JMT
CHECKED BY WJV