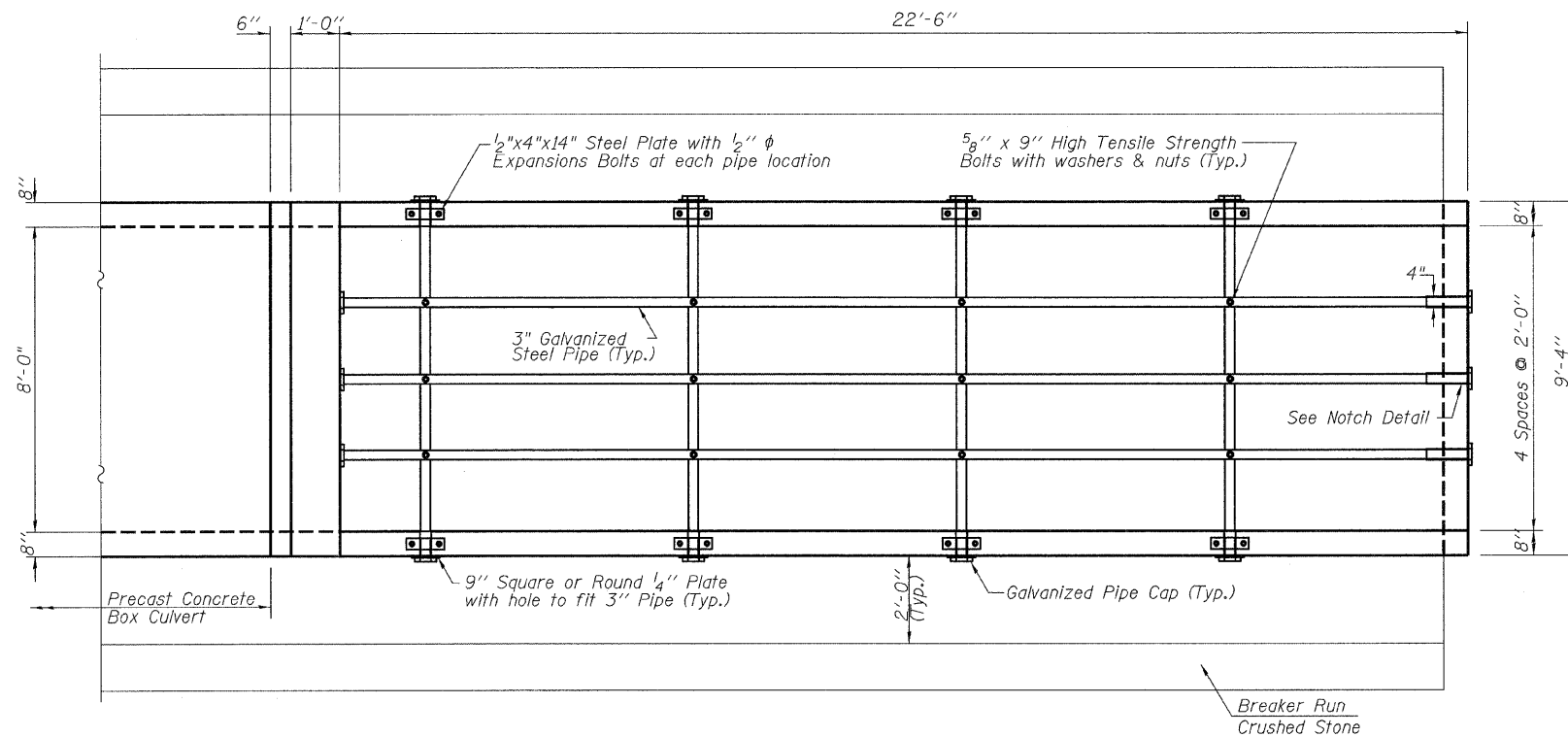
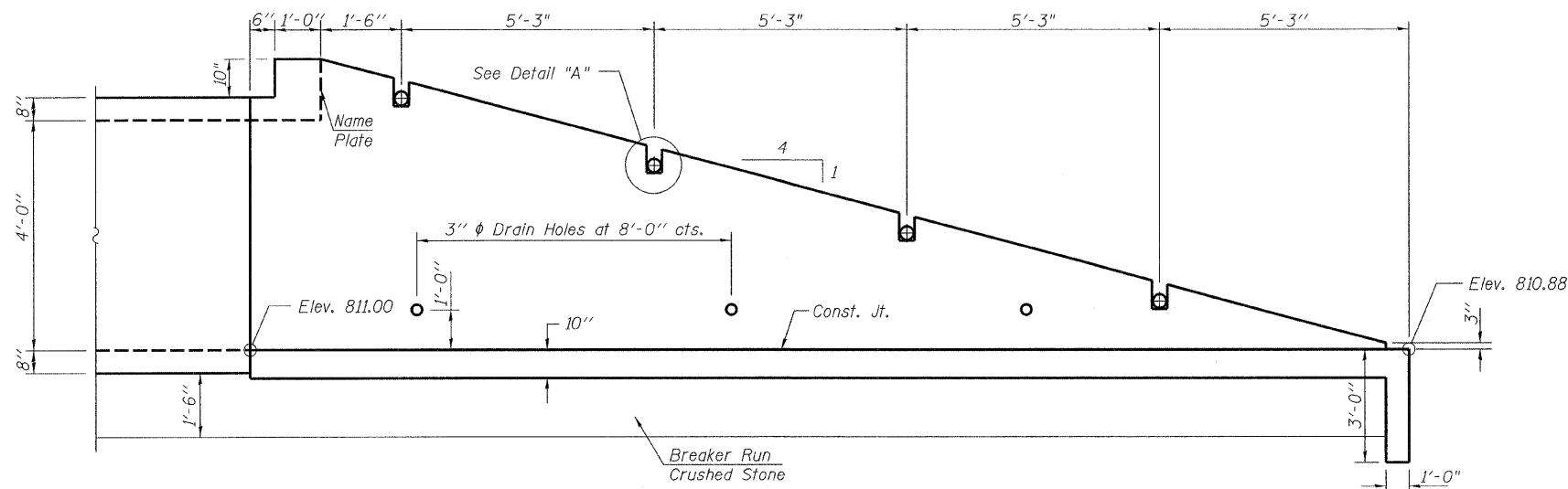


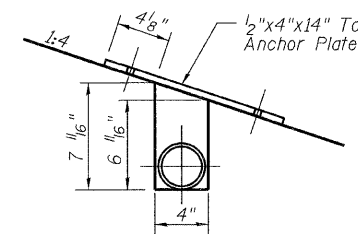
ROUTE NO.	SECTION	COUNTY	TOTAL SHEETS	SHEET NO.	SHEET NO. 1
FAP 505	**	WINNEBAGO	335	143	2 SHEETS
FED. ROAD DIST. NO. 7	ILLINOIS	FED. AID PROJECT-			



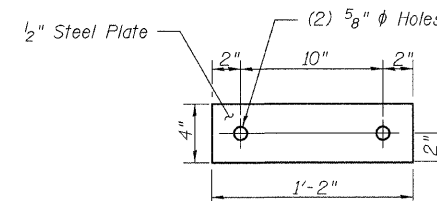
PLAN VIEW



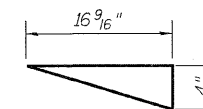
PROFILE VIEW



DETAIL "A"



TOP ANCHOR PLATE



NOTCH DETAIL
(4" Wide)

STATION 10998+25
 BUILT 20 BY
 STATE OF ILLINOIS
 F.A.P. RT. 505 SEC 109RS-2, Ya-15d-RS-1
 LOADING HS20
 STR. NO. 101-1319

NAME PLATE

See Std. 515001
 Located on the NE Headwall.
 Locate to miss pipe grating.

GENERAL NOTES

Reinforcement bars shall conform to the requirements of A.S.T.M. A 706 Gr 60 (IL Modified). See Special Provisions.

The distance from the top of headwall or wingwall to the adjacent ground surface shall be 3 inches (nominal), but in no case greater than 4 inches.

Grating shall include pipes, plates, expansion bolts, and all other hardware as shown and shall be included with the contract unit price per Cu. Yd. for Concrete Structures.

Bolts, Nuts, and Washers shall be in accordance with Article 1006.08 of the Standard Specifications and shall be galvanized.

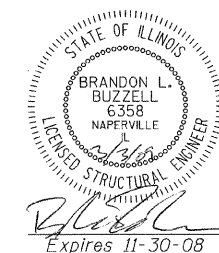
Steel Plates shall conform to AASHTO M-183 and shall be galvanized conforming to AASHTO M-111.

Steel Pipes shall conform to A.S.T.M. A-53 (Type E or S) Grade B, Schedule 40, and shall be galvanized conforming to A.S.T.M. A-120. Contractor shall field verify pipe length.

See Plan and Profile Sheet 74 of 335 for more information.

See Sheet 159 of 335 for details of Breaker Run Crushed Stone.

If the Contractor elects to use precast construction, the Precaster shall provide complete details in the shop drawings for review by the Engineer.



rjngroup

Excellence through Ownership

200 West Front Street
 Wheaton, IL 60187

ILLINOIS DEPARTMENT OF TRANSPORTATION

GRATED CULVERT EXTENSION NO. 10
 IL-75 OVER TRIBUTARY TO PECATONICA RIVER
 FAP RTE 505 - SECTION
 *111RS-4, 111BR-1, Ya-15d-RS-1, & (W-15d)T-1
 WINNEBAGO COUNTY
 STATION 10998+25

DATE: 3/03/2009

DRAWN BY BLB
 CHECKED BY WJV