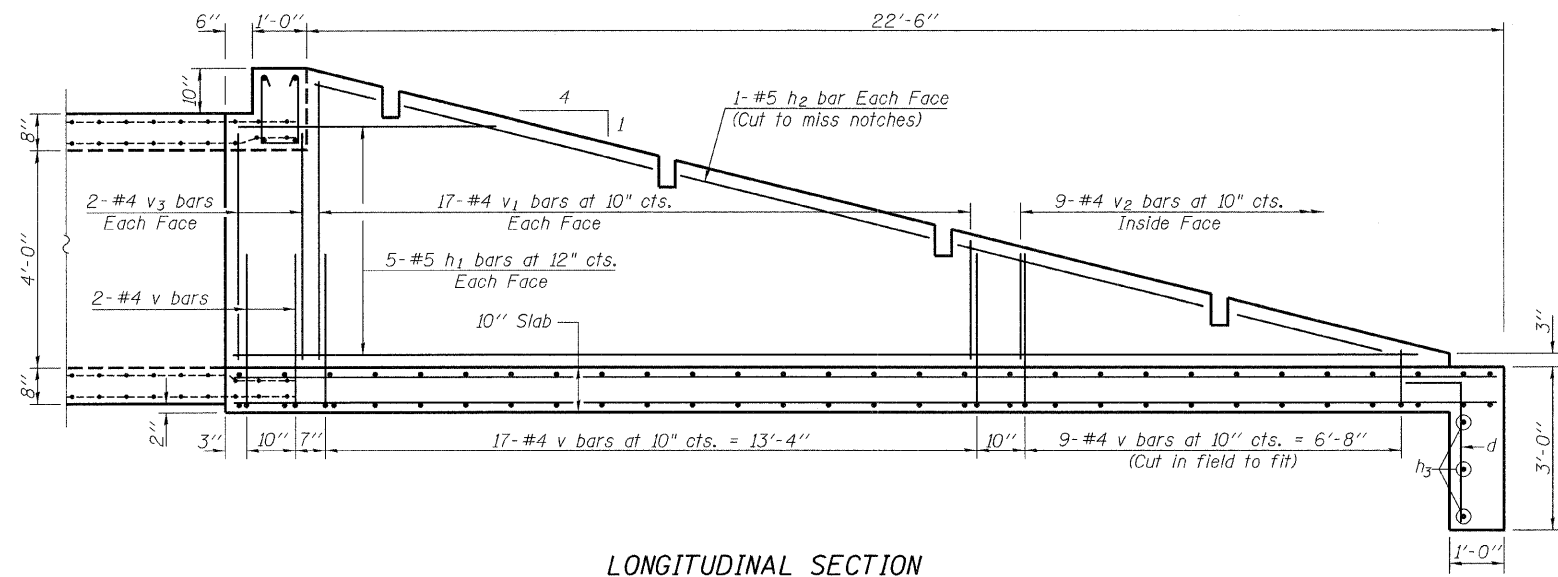
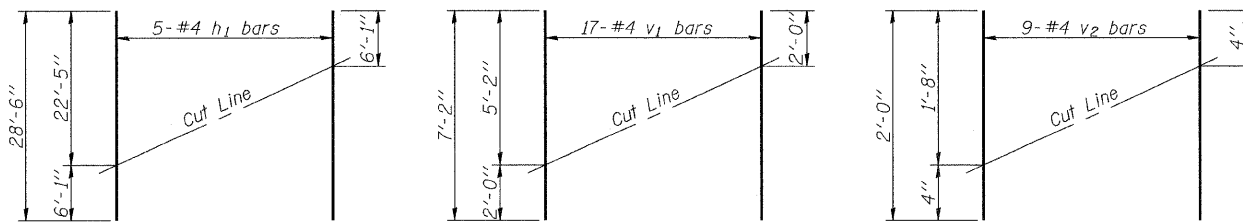


PLAN



LONGITUDINAL SECTION

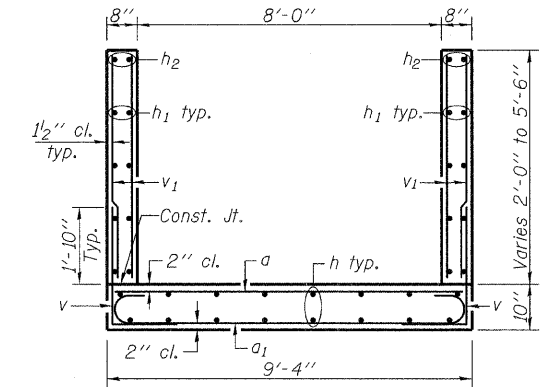


FIELD CUTTING DIAGRAMS

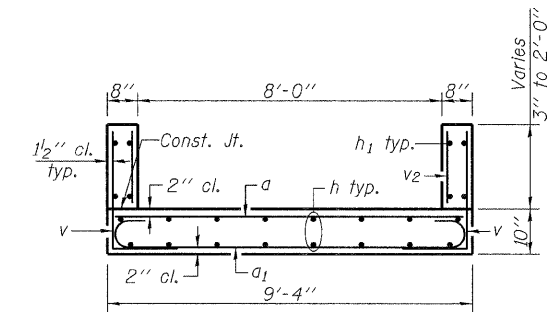
Order bars full length. Cut as shown and use remainder of bars in opposite face (v_1 , h_1) or opposite wingwall (v_2).

NOTE

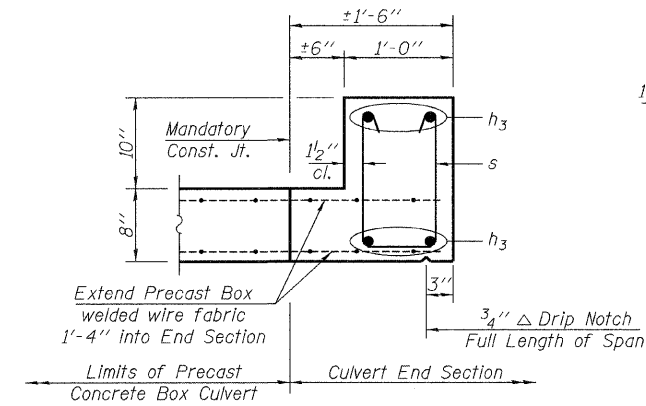
See Sheet 1 of 2 for General Notes.



SECTION A-A



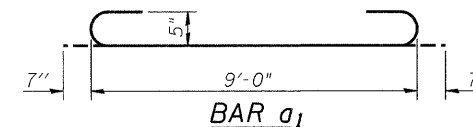
SECTION B-B



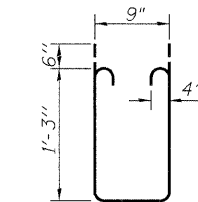
SECTION C-C

END SECTION
BILL OF MATERIAL

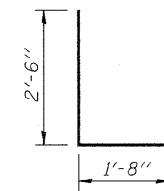
Bar	No.	Size	Length	Shape
a	24	#5	9'-0"	—
a1	24	#5	10'-2"	—
d	10	#5	4'-6"	7
h	20	#5	23'-8"	—
h1	10	#5	28'-6"	—
h2	4	#5	21'-9"	—
h3	7	#6	9'-0"	—
s	10	#5	4'-3"	U
v	56	#4	4'-2"	L
v1	34	#4	7'-2"	—
v2	9	#4	2'-0"	—
v3	8	#4	4'-3"	—
Reinforcement Bars			Pound	1,910
Concrete Structures			Cu. Yd.	11.6



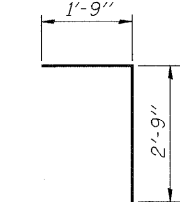
BAR a1



BAR s



BAR v



BAR d

Excellence through Ownership

200 West Front Street
Wheaton, IL 60187

ILLINOIS DEPARTMENT OF TRANSPORTATION

GRATED CULVERT EXTENSION NO. 10
IL-75 OVER TRIBUTARY TO PECATONICA RIVER
FAP RTE 505 - SECTION
*111RS-4, 111BR-1, Ya-15d-RS-1, & (W-15d)T-1
WINNEBAGO COUNTY
STATION 10998+25

DATE: 3/03/2009

DRAWN BY: BLB
CHECKED BY: WJV