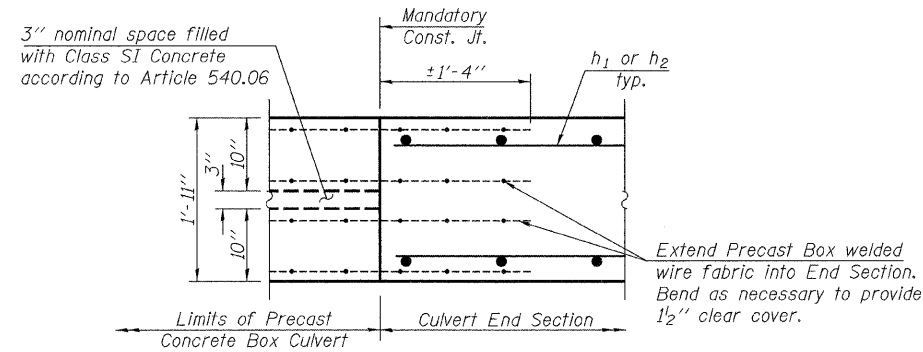
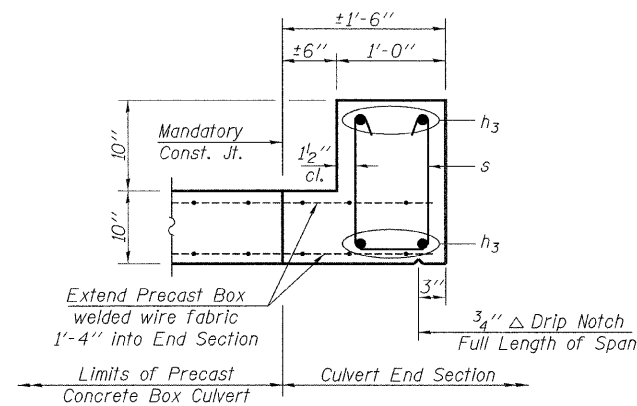


ROUTE NO.	SECTION	COUNTY	TOTAL SHEETS	SHEET NO.	SHEET NO. 3
FAP 505	**	WINNEBAGO	335	147	3 SHEETS
FED. ROAD DIST. NO. 7	ILLINOIS	FED. AID PROJECT			

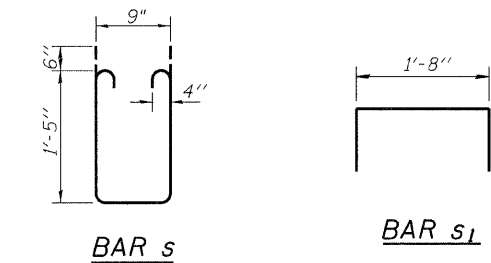
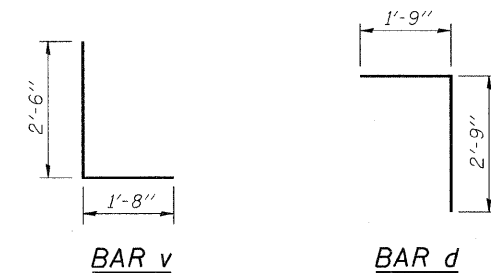
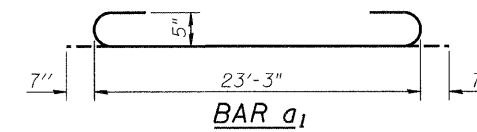
**111RS-4, 111BR-1, Ya-15d-RS-1, & (W-15d)T-1
Contract # 64970



DETAIL 1

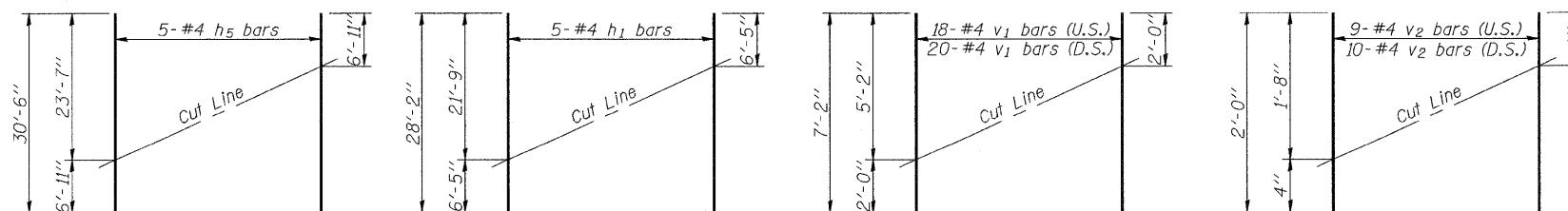


SECTION C-C



**BILL OF MATERIAL
TWO END SECTIONS**

Bar	No.	Size	Length	Shape
a	50	#5	23'-3"	—
a1	50	#5	24'-5"	—
d	48	#5	4'-6"	┌
h	48	#5	22'-11"	—
h1	15	#5	28'-2"	—
h2	12	#5	22'-9"	—
h3	14	#6	23'-3"	—
h4	48	#5	24'-11"	—
h5	15	#5	30'-6"	—
s	48	#5	4'-7"	□
s1	59	#4	3'-2"	┌
v	244	#4	4'-2"	L
v1	114	#4	7'-2"	—
v2	38	#4	2'-0"	—
v3	24	#4	4'-5"	—
Reinforcement Bars			Pound	6,650
Concrete Structures			Cu. Yd.	61.4



FIELD CUTTING DIAGRAMS

Order bars full length. Cut as shown and use remainder of bars in opposite face (h1, h4, v1) or opposite wingwall (v2).

NOTE

See Sheet 1 of 2 for General Notes.

 Excellence through Ownership 200 West Front Street Wheaton, IL 60187	ILLINOIS DEPARTMENT OF TRANSPORTATION GRATED CULVERT EXTENSION NO. 11 IL-75 OVER TRIBUTARY TO PECATONICA RIVER FAP RTE 505 - SECTION •111RS-4, 111BR-1, Ya-15d-RS-1, & (W-15d)T-1 WINNEBAGO COUNTY STATION 11025+71 STRUCTURE NO. 101-2049
	DATE: 3/03/2009 DRAWN BY: BLB CHECKED BY: WJV