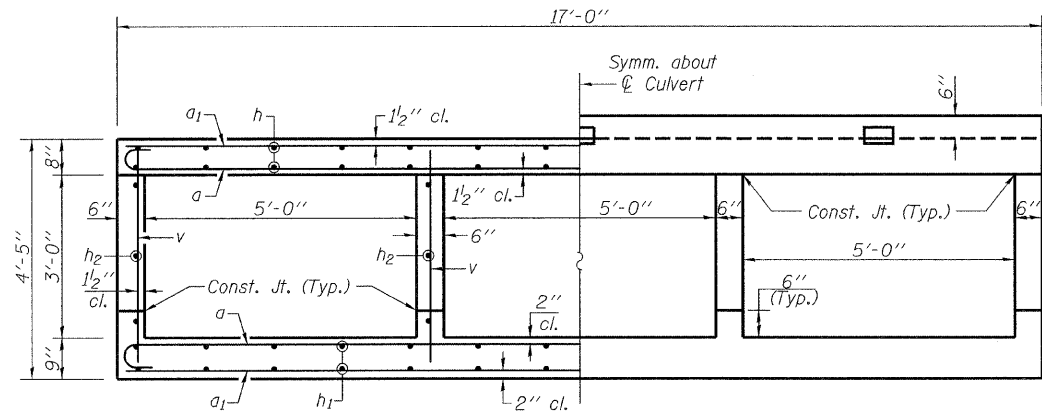


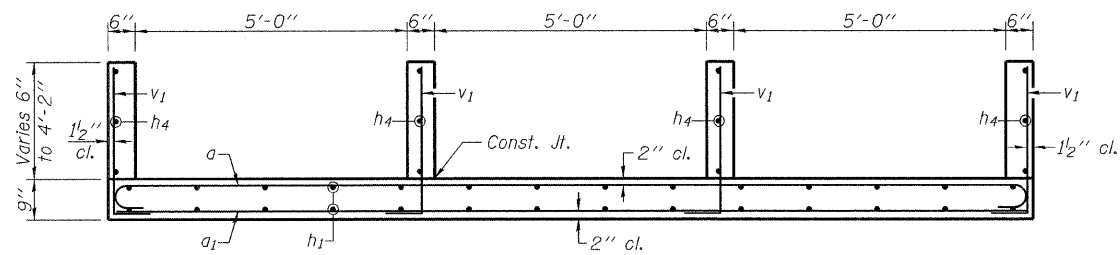
ROUTE NO.	SECTION	COUNTY	TOTAL SHEETS	SHEET NO.	SHEET NO. 3 5 SHEETS
FAP 505	**	WINNEBAGO	335	151	
FED. ROAD DIST. NO. 7		ILLINOIS	FED. AID PROJECT-		

Contract # 64970
** (W-15d) T-1

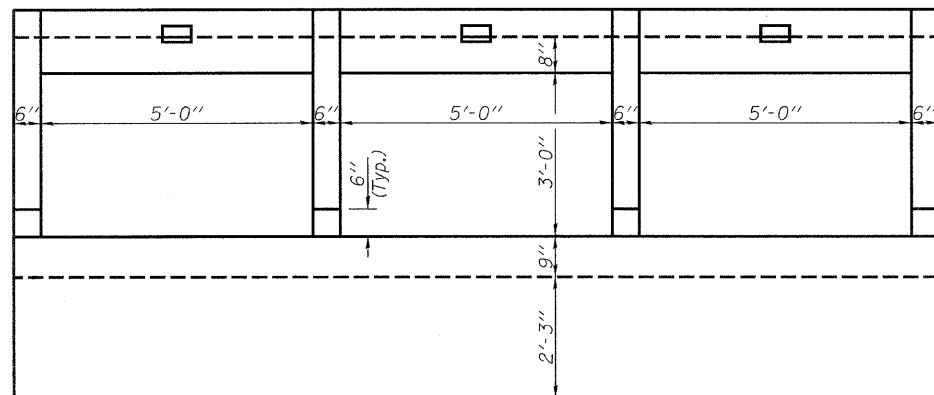


HALF SECTION
THRU BARREL

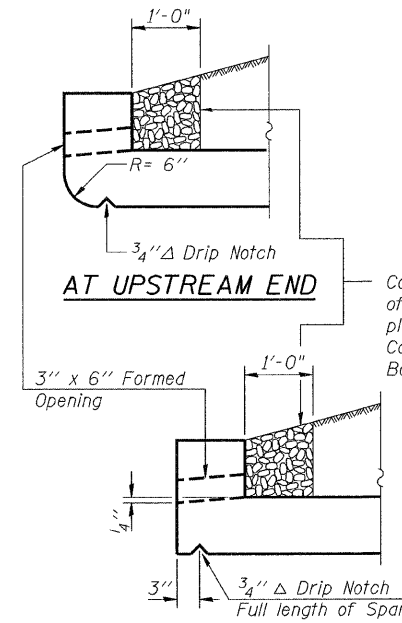
HALF ELEVATION
AT END OF BARREL



SECTION A-A



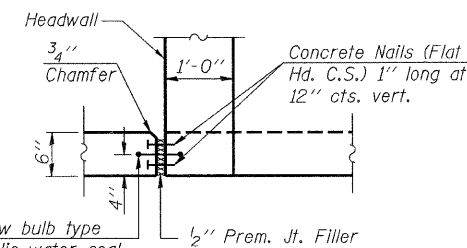
END ELEVATION



AT UPSTREAM END

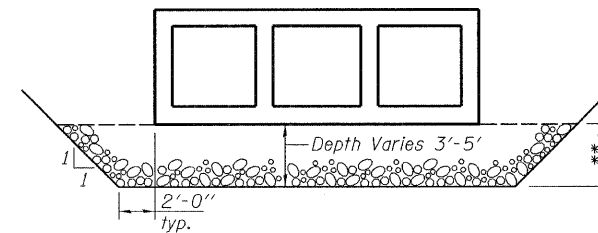
AT DOWNSTREAM END

DRAIN DETAIL



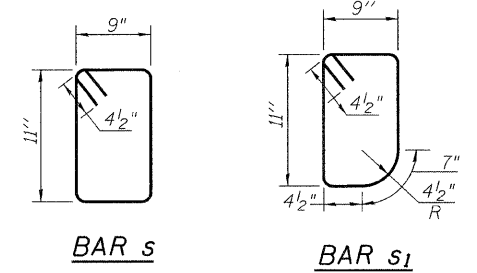
WATER SEAL JOINT DETAIL

Cost of Water Seal Joint included with Concrete Box Culverts



BREAKER RUN CRUSHED STONE DETAIL

** See Schedule of Quantities on sheet 23 of 335 for Removal of Unsuitable Material



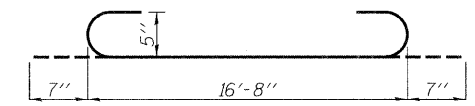
BAR s

BAR s1

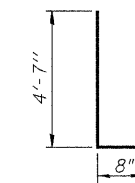
BILL OF MATERIAL

Bar	No.	Size	Length	Shape
a	210	#5	17'-10"	U
a1	207	#5	16'-8"	—
d	34	#5	4'-6"	L
h	92	#4	28'-2"	—
h1	138	#4	29'-1"	—
h2	24	#5	28'-6"	—
h3	10	#6	16'-8"	—
h4	12	#5	21'-2"	—
s	17	#4	4'-1"	U
s1	17	#4	3'-11"	U
v	296	#4	4'-1"	—
v1	156	#4	5'-3"	L

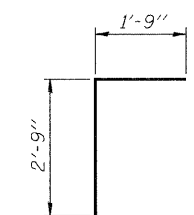
Concrete Box Culverts	Cu. Yd.	82.7
Reinforcement Bars	Pound	14,750
Breaker Run Crushed Stone	Ton	683



BAR a



BAR v1



BAR d

rjngroup
Excellence through Ownership

200 West Front Street
Wheaton, IL 60187

ILLINOIS DEPARTMENT OF TRANSPORTATION
CULVERT DETAILS II
IL-75 OVER UNNAMED TRIBUTARY
TO SOUTH BRANCH OTTER CREEK
FAP RTE 505 - SECTION (W-15d)T-1
WINNEBAGO COUNTY
STATION 11054+39
STRUCTURE NO. 101-1083

DATE: 3/03/2009

DRAWN BY JMT
CHECKED BY BLB