

Bench Mark: GPS control point at Station 11072+11.46, 27.87' Rt. Elev. 795.49

Existing Structure: SN 101-1043 is a 30' long 10'x5' reinforced concrete box culvert at Station 11075+52. Traffic to be detoured during construction.

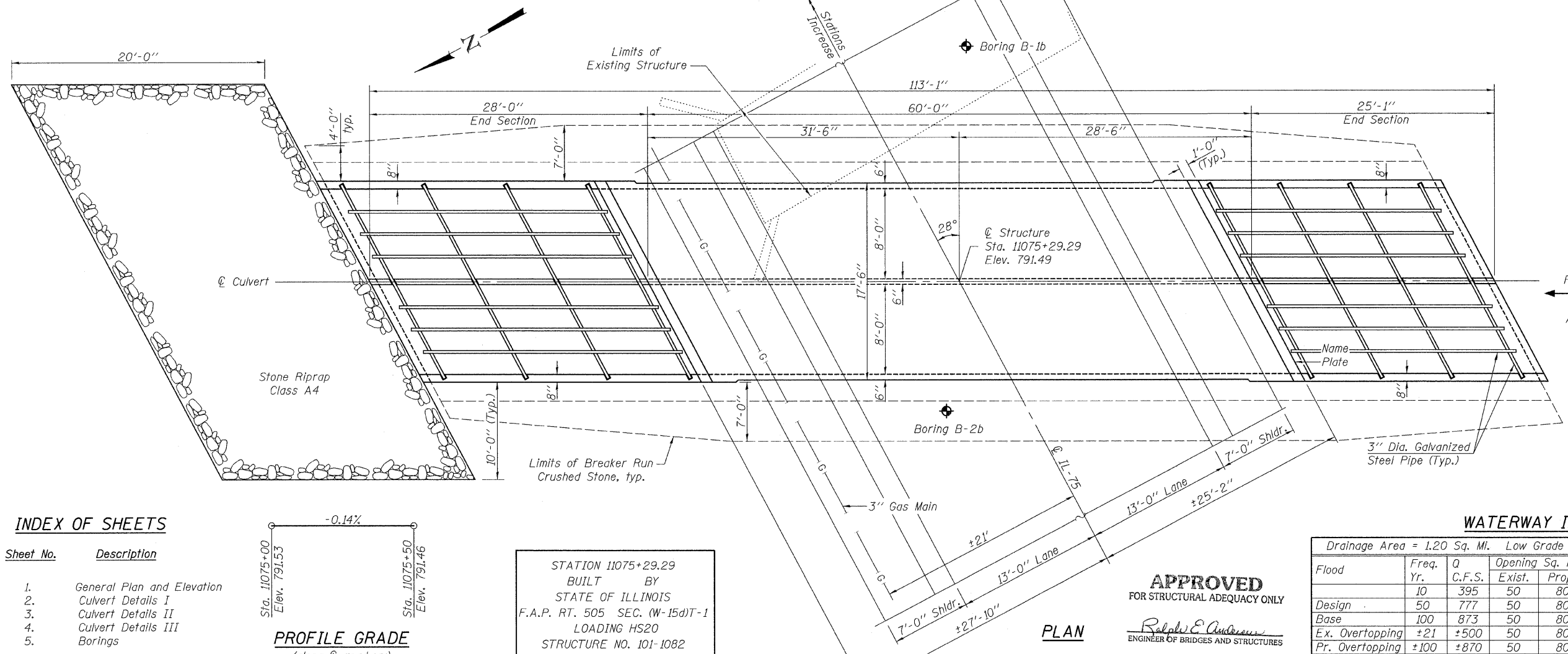
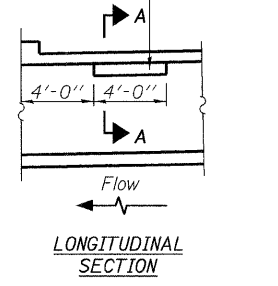
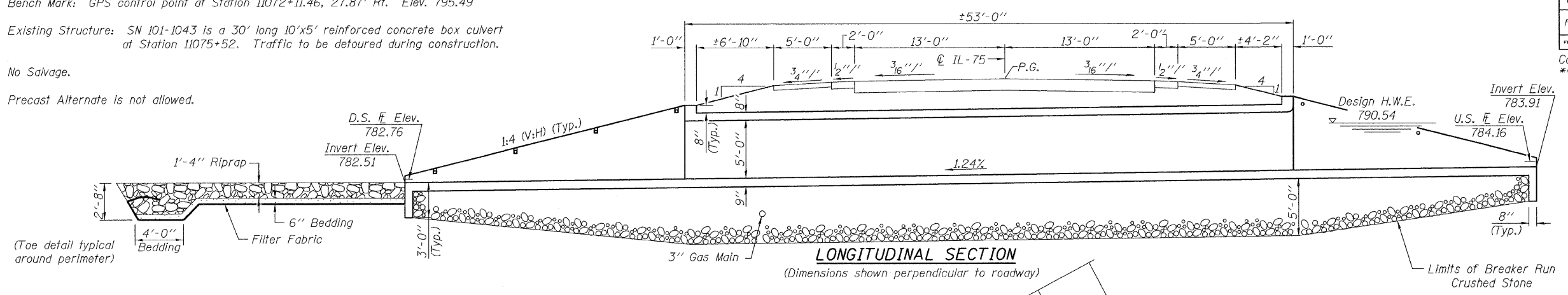
No Salvage.

Precast Alternate is not allowed.

ROUTE NO.	SECTION	COUNTY	TOTAL SHEETS	SHEET	SHEET NO.
FAP 505	**	WINNEBAGO	335	154	5
FED. ROAD DIST. NO. 7		ILLINOIS	FED. AID PROJECT-		

Contract #64970  
\*\* (W-15d) T-1

Notch formed by rough finished board attached to and removed with formwork, each interior wall. (Do not chamfer)



PHOEBE NESTING  
SITE DETAILS  
(Downstream End Only)

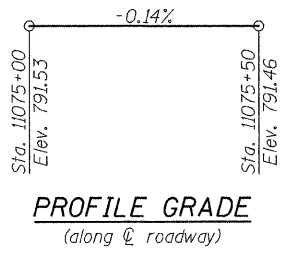
LOADING HS20-44  
Allow 50#/sq. ft. for future wearing surface.

DESIGN SPECIFICATIONS  
AASHTO 2002 Standard Specifications  
for Highway Bridges

DESIGN STRESSES  
FIELD UNITS  
f<sub>c</sub> = 3,500 psi  
f<sub>y</sub> = 60,000 psi (reinforcement)  
f<sub>y</sub> = 35,000 psi (steel pipe)

INDEX OF SHEETS

Sheet No.	Description
1.	General Plan and Elevation
2.	Culvert Details I
3.	Culvert Details II
4.	Culvert Details III
5.	Borings



STATION 11075+29.29  
BUILT BY  
STATE OF ILLINOIS  
F.A.P. RT. 505 SEC. (W-15d)T-1  
LOADING HS20  
STRUCTURE NO. 101-1082

NAME PLATE  
See Std. 515001

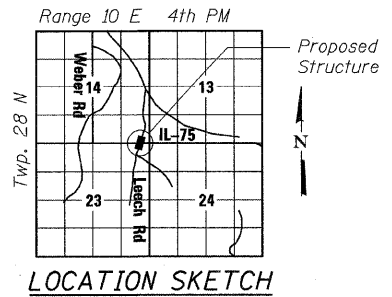
WATERWAY INFORMATION

Drainage Area = 1.20 Sq. Mi. Low Grade Elev. 791.41 @ Sta. 11075+88.6

Flood	Freq. Yr.	Q C.F.S.	Opening Sq. Ft.		Nat. H.W.E.	Head - Ft.		Headwater El.	
			Exist.	Prop.		Exist.	Prop.	Exist.	Prop.
Design	10	395	50	80	786.3	0.50	-0.20	790.39	788.00
Design	50	777	50	80	787.24	1.95	1.99	791.84	790.54
Base	100	873	50	80	787.55	2.22	2.94	792.11	791.49
Ex. Overtopping	±21	±500	50	80	-	1.52	-	791.41	-
Pr. Overtopping	±100	±870	50	80	-	-	2.86	-	791.41

APPROVED  
FOR STRUCTURAL ADEQUACY ONLY

Robert E. Anderson  
ENGINEER OF BRIDGES AND STRUCTURES



TOTAL BILL OF MATERIAL

ITEM	UNIT	TOTAL
Removal of Existing Structures No. 15	Each	1
Concrete Box Culverts	Cu. Yd.	113.1
Reinforcement Bars	Pound	38,700
Stone Riprap, Class A4	Sq. Yd.	84
Filter Fabric	Sq. Yd.	84
Breaker Run Crushed Stone	Ton	921
Name Plates	Each	1

GENERAL NOTES

Reinforcement bars shall conform to the requirements of ASTM A 706 Gr 60. See Special Provisions.  
The proposed grouted end sections (headwalls and wingwalls) shall extend less than four inches (i.e. 3 inches typical) above the adjacent ground elevation.  
Layout of the slope protection system may be varied to suit ground conditions in the field as directed by the Engineer.  
See Sheet 3 of 5 for Breaker Run Crushed Stone detail.

ILLINOIS DEPARTMENT OF TRANSPORTATION  
GENERAL PLAN  
IL 75 OVER UNNAMED TRIBUTARY  
TO SOUTH BRANCH OTTER CREEK  
FAP RTE 505 - SECTION (W-15d)T-1  
WINNEBAGO COUNTY  
STATION 11075+29.29  
STRUCTURE NO. 101-1082

**rjngroup**  
Excellence through Ownership  
200 West Front Street  
Wheaton, IL 60187

DATE: 3/03/2009  
DRAWN BY JMT  
CHECKED BY BLB