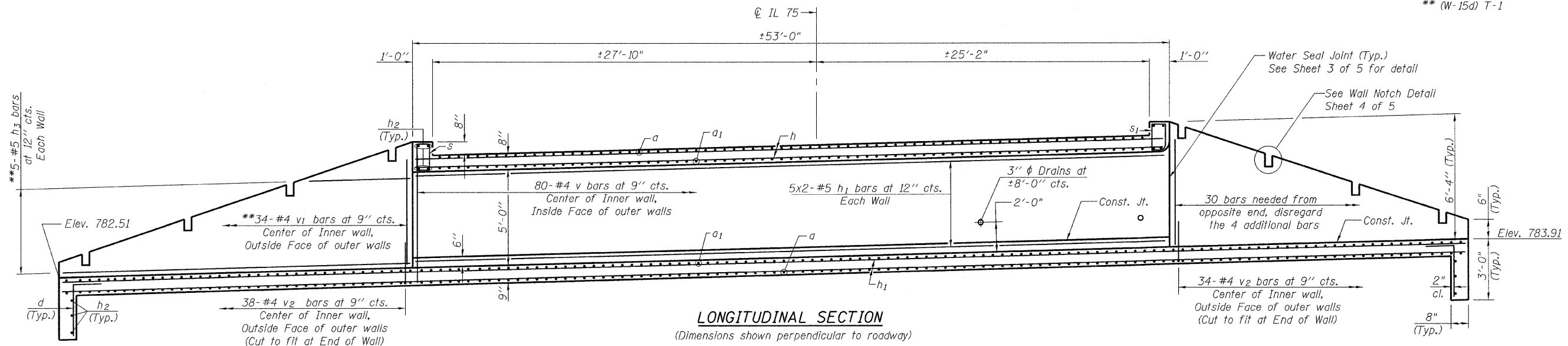
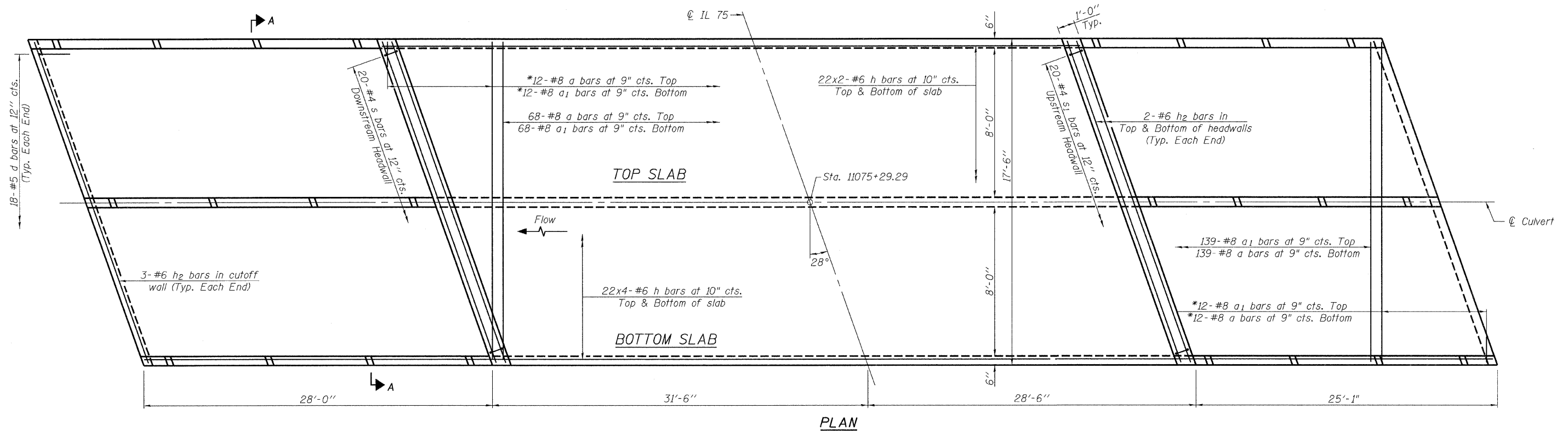


ROUTE NO.	SECTION	COUNTY	TOTAL SHEETS	SHEET NO.	SHEET NO. 2 5 SHEETS
FAP 505	**	WINNEBAGO	335	155	
FED. ROAD DIST. NO. 7		ILLINOIS	FED. AID PROJECT-		

Contract #64970
 ** (W-15d) T-1



**Order v₁ and h₄ bars full length.
 Cut to fit wall and use remainder
 of bars in opposite end.



*Order a(E) and a₁(E) bars full length.
 Cut to fit skew and use remainder
 of bars in opposite end.

NOTES

Bars indicated thus 12x2-#5 etc. indicates
 12 lines of bars with 2 lengths per line.
 Minimum lap length for #5 Bars = 1'-8",
 #6 Bars = 2'-0".
 See Sheet 3 of 5 for cross section thru barrels,
 Section A-A and headwall details.
 See Sheet 4 of 5 for Grated Culvert Extension
 details.

rjngroup

Excellence through Ownership

200 West Front Street
 Wheaton, IL 60187

ILLINOIS DEPARTMENT OF TRANSPORTATION
 CULVERT DETAILS I
 IL 75 OVER UNNAMED TRIBUTARY
 TO SOUTH BRANCH OTTER CREEK
 FAP RTE 505 - SECTION (W-15d)T-1
 WINNEBAGO COUNTY
 STATION 11075+29.29
 STRUCTURE NO. 101-1082

DATE: 3/03/2009

DRAWN BY JMT
 CHECKED BY BLB