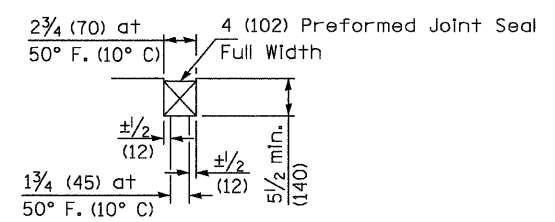
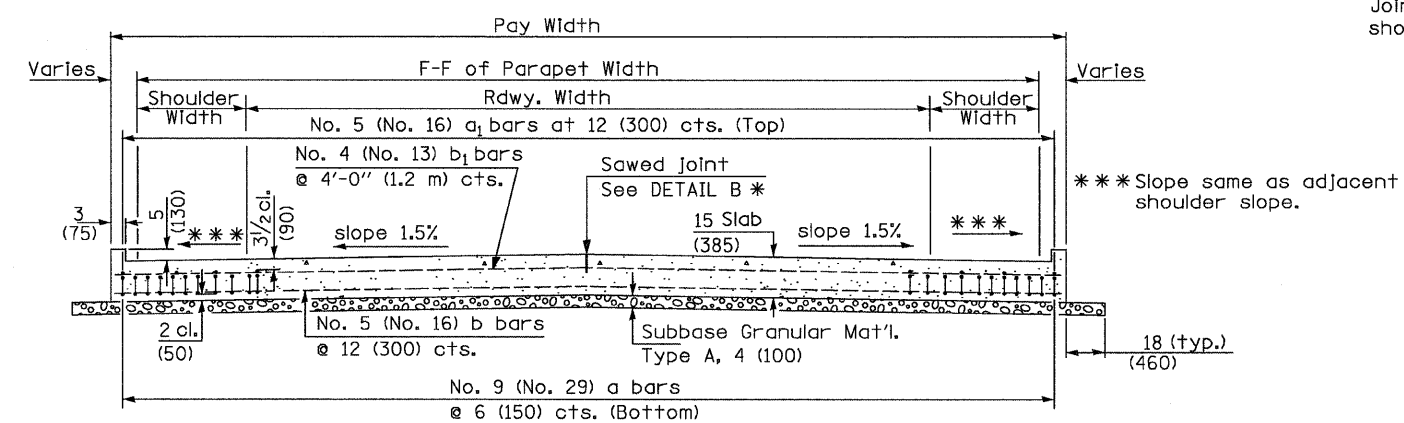


PREFORMED JOINT SEAL



DETAIL A

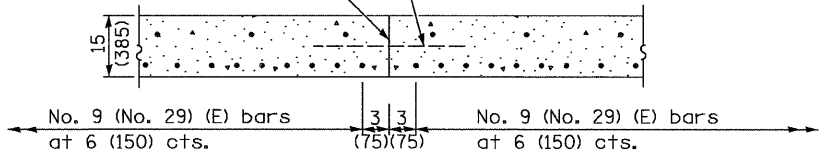
① Stagger No. 9 (No. 29) a bars as shown on plan - full width



SECTION D-D

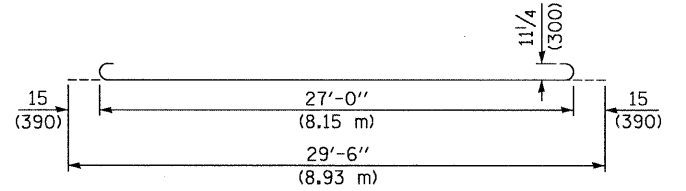
(See Plan for Dimensions not shown)

Longitudinal Construction Joint in accordance with details shown on Standard 420001.

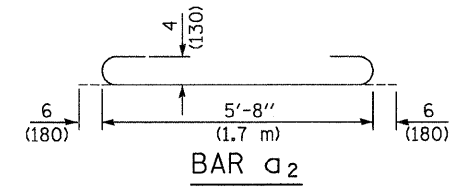


OPTIONAL LONGITUDINAL CONSTRUCTION JOINT

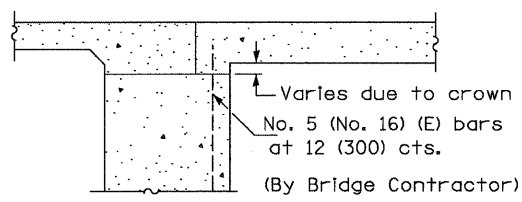
As approved by the Engineer, the Contractor may elect to reduce the widths of pour by use of the Optional Longitudinal Construction Joint shown. Joints shall be located at the edge of a traffic lane.



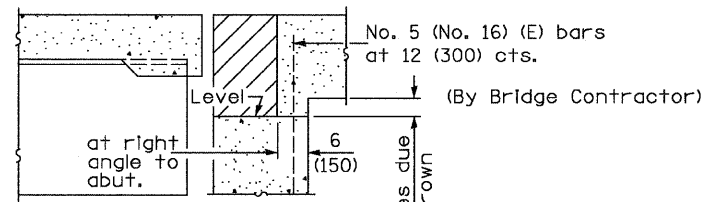
BAR a



BAR a2



SECTION E-E (Integral Abutments)



SECTION E-E (Jointed Abutments)

DESIGN STRESSES

fy = 60,000 p.s.i. (400 MPa)
f'c = 3,500 p.s.i. (24 MPa)
n = 8.5

REVISIONS	
NAME	DATE

ILLINOIS DEPARTMENT OF TRANSPORTATION
F.A.P. ROUTE 505 (IL 75)

**ILLINOIS ROUTE 75
BRIDGE APPROACH PAVEMENT DETAILS**
(SHEET 3 of 4)

SCALE: VERT. DRAWN BY MTH
 HORIZ. CHECKED BY SPF
DATE: 3/3/09

PLOT DATE = 3/2/2009
 FILE NAME = K:\11195800\11_75_3P_East\CHDD\Design\1195801_BridgeApproachPavnt.dgn
 PLOT SCALE = 1:50
 PLOT DATE = 3/2/2009
 PLOT NAME = Sheet 3