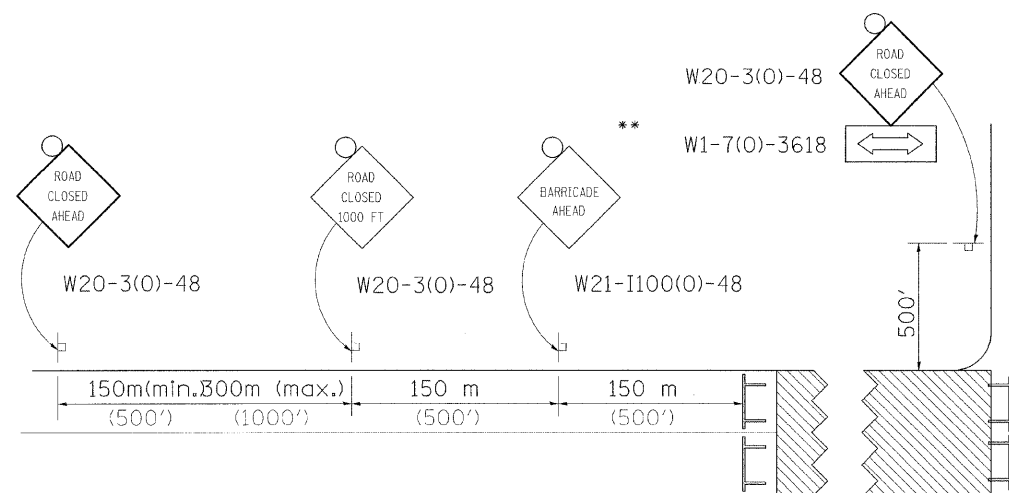
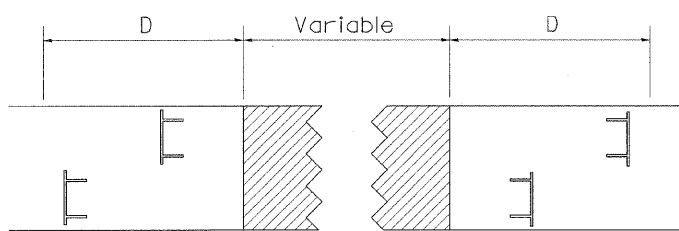


TRAFFIC CONTROL FOR ROAD CLOSURE



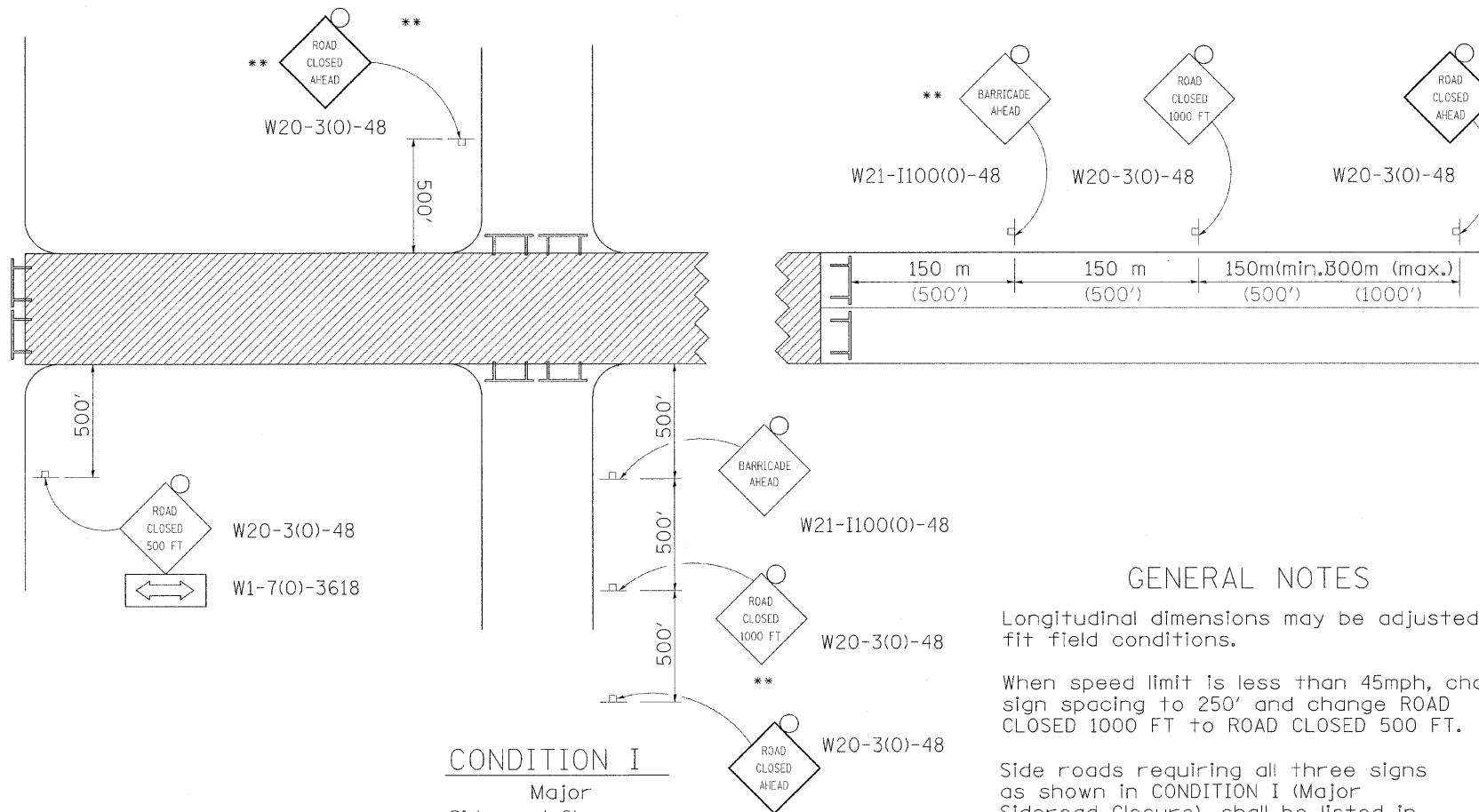
ROAD CLOSED TO THRU TRAFFIC BARRICADE SET UP



Type III Barricades and R11-4-4830 signs shall be as shown in "Road Closed To All Thru Traffic" detail on Highway Standard 701901. If the distance "D" exceeds 600 m (2000') an additional set of barricades and R11-4-4830 shall be placed at each end of the work area.

CONDITION II

Minor Sideroad Closure



CONDITION I

Major Sideroad Closure

- SYMBOLS**
- Work area
 - Type III Barricade with Flashers
 - Sign with flashing light

GENERAL NOTES

Longitudinal dimensions may be adjusted to fit field conditions.

When speed limit is less than 45mph, change sign spacing to 250' and change ROAD CLOSED 1000 FT to ROAD CLOSED 500 FT.

Side roads requiring all three signs as shown in CONDITION I (Major Sideroad Closure), shall be listed in the special provision.

** Where local access is to be maintained, barricades are to be set up as shown in Road Closed to thru traffic. Type III Barricades and R11-2-4830 signs shall be as shown in "Road Closed To All Traffic" detail on Highway Standard 701901.

All dimensions are in millimeters (inches) unless otherwise shown.

TYPICAL APPLICATION FOR ROAD CLOSURE

*111RS-4, 111BR-1, Yg-15d-RS-1, & (W-15d)T-1

PLOT DATE = 3/2/2009
 FILE NAME = k:\111\195800\11_75_3p_essat\cadd\design\195800\Dist_Std.dgn
 PLOT SCALE = 1:50
 USER NAME = J.Tracy
 MODEL = Dist_Std_07

FILE NAME =	USER NAME = #USER*	DESIGNED -	REVISED - 1-11-08
#FILEL*		DRAWN -	REVISED -
	PLOT SCALE = 1:50	CHECKED -	REVISED -
	PLOT DATE = 3/2/2009	DATE -	REVISED -

STATE OF ILLINOIS
 DEPARTMENT OF TRANSPORTATION

REGION 2 / DISTRICT 2 STANDARD

SCALE: 1:50 SHEET NO. OF SHEETS STA. TO STA.

F.A. RTE.	SECTION	COUNTY	TOTAL SHEETS	SHEET NO.
505	.	STEPHENSON	335	170
FED. ROAD DIST. NO. 2 ILLINOIS FED. AID PROJECT			CONTRACT NO. 64970	