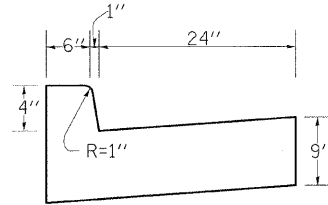
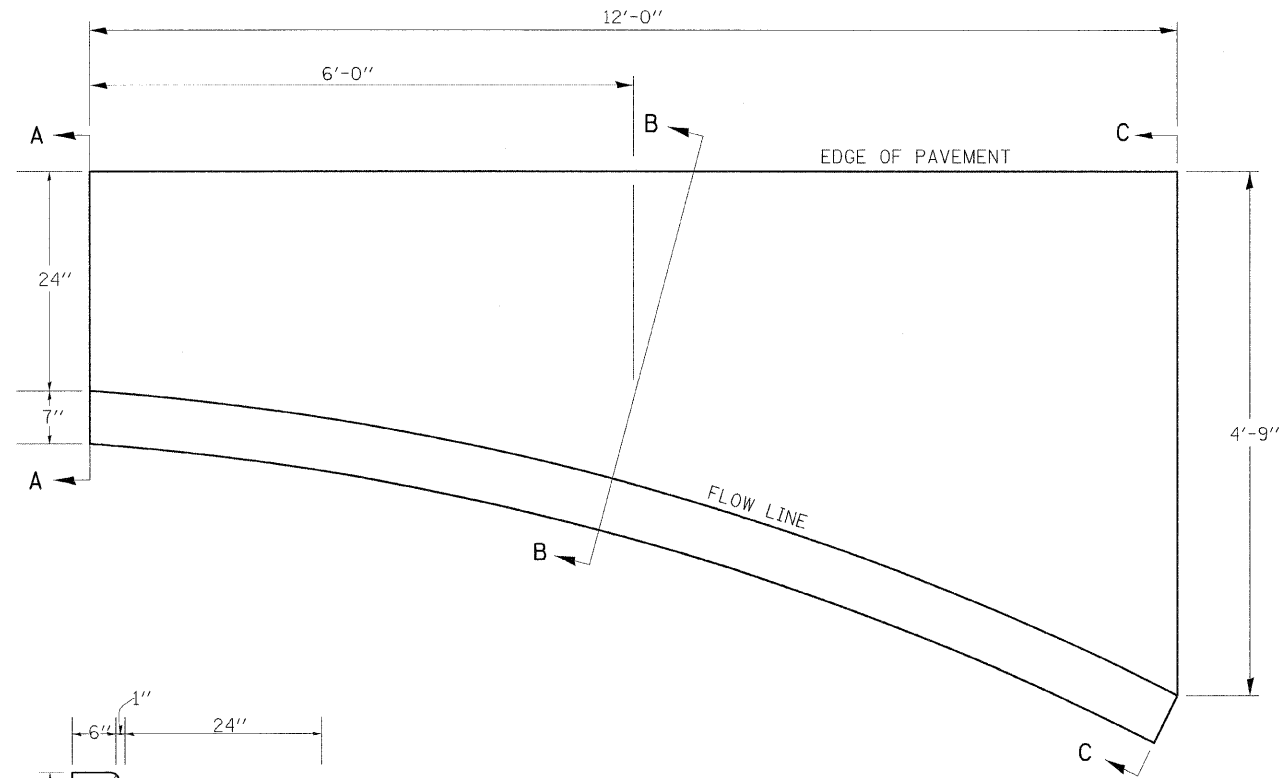
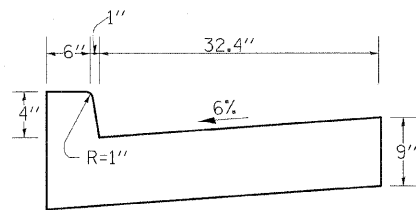


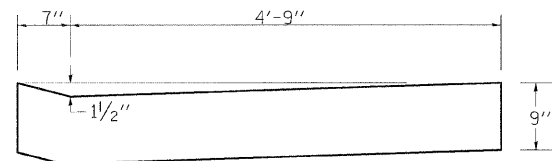
# STANDARD INLET FOR CURB & GUTTER TYPE M4-.24



SECTION A-A



SECTION B-B



SECTION C-C

### NOTES

Class SI Concrete shall be used throughout.

The Curb and Gutter Inlet will be paid for at the contract unit price per cubic yard for Class SI Concrete (OUTLETS).

Joints shall be constructed in accordance with the requirements of Article 606.07 of the Standard Specifications.

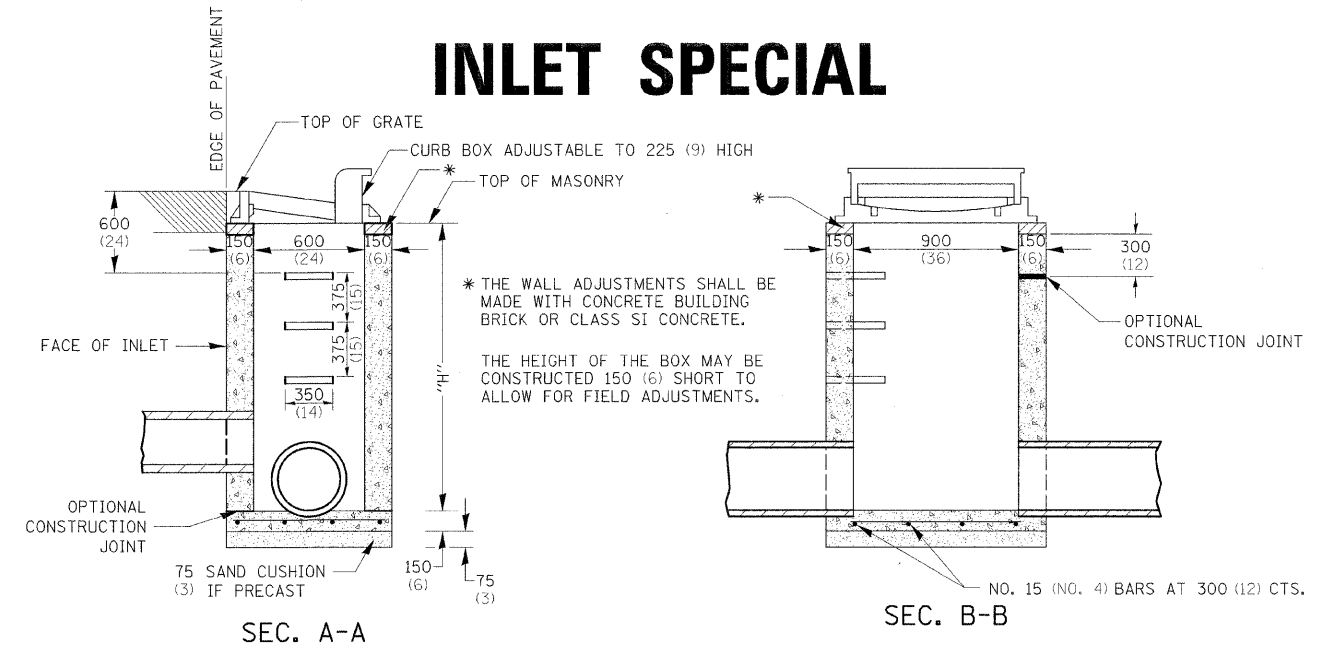
When curb and gutter is constructed adjacent to flexible pavement, a 1" expansion joint shall be installed at construction joints.

- QUANTITY -

Section A-A to C-C  
(1.23 Cu. Yds.)  
Class SI Concrete

REVISED - 10-10-06

# INLET SPECIAL



SEC. A-A

SEC. B-B

### NOTES

SEE STANDARD 602701 FOR DETAILS OF STEPS.

EXCEPT AS NOTED HEREON INLET SPECIAL SHALL BE CONSTRUCTED IN ACCORDANCE WITH SECTION 602 OF THE STANDARD SPECIFICATIONS.

THE SIDE WALLS MAY BE BUILT AS PRECAST SEGMENTED SECTIONS.

ALL VOIDS AROUND PIPE ENTRANCE, BOTH INSIDE AND OUTSIDE, SHALL BE SEALED WITH MORTAR.

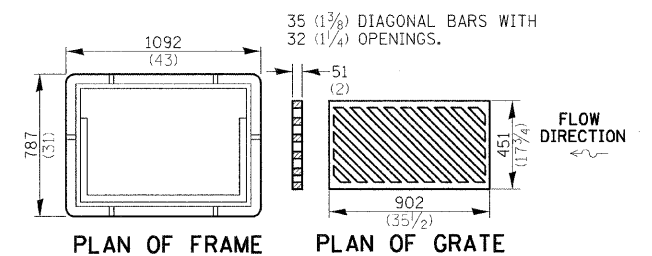
WEIGHT OF CAST IRON FRAME & GRATE = 240 kg (530 lbs.) ± . STEPS SHALL BE OMITTED WHEN DEPTH OF "H" IS LESS THAN 1.5 m (5 ft) .

## DETAIL OF FRAME & GRATE

### NOTES

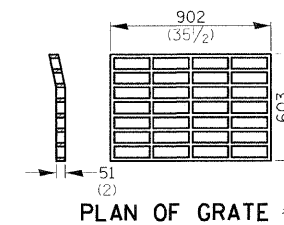
CLASS SI CONCRETE OR PRECAST CONCRETE SHALL BE USED THROUGHOUT. PRECAST CONCRETE SHALL BE IN ACCORDANCE WITH SECTION 504.01 THRU 504.05 OF THE STANDARD SPECIFICATIONS EXCEPT THAT CONCRETE STRENGTH SHALL BE 27.5 MPa (4,000 psi) AFTER 28 DAYS.

THE CONTRACT UNIT PRICE EACH FOR INLET SPECIAL SHALL INCLUDE THE COST OF CONSTRUCTING THE INLET BOX, FURNISHING AND INSTALLING THE FRAME AND GRATE, THE CAST IRON STEPS (IF USED), THE PRECAST FLOOR SLABS, SAND CUSHION (WHEN USED) AND REINFORCEMENT BARS.

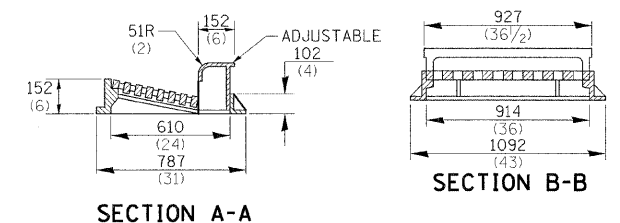


PLAN OF FRAME

PLAN OF GRATE



PLAN OF GRATE \*



SECTION A-A

SECTION B-B

REVISED - 11-10-94

\* THIS GRATE TO BE USED WITHOUT CURB BOX WHEN INLET IS IN DRIVEWAY.

ALL DIMENSIONS ARE IN MILLIMETERS (INCHES) UNLESS OTHERWISE NOTED.

\*111RS-4, 111BR-1, Ya-15d-RS-1, & (W-15d)T-1

REVISED	REVISED	REVISED	REVISED	SCALE: 1/8" = 1'-0"	SHEET NO. OF SHEETS	STA.	TO STA.	F.A. RTE.	SECTION	COUNTY	TOTAL SHEETS	SHEET NO.
REVISED	REVISED	REVISED	REVISED					505		STEPHENSON	335	175
											CONTRACT NO.	64970
											FED. ROAD DIST. NO. 2	ILLINOIS FED. AID PROJECT

REGION 2 / DISTRICT 2 STANDARD