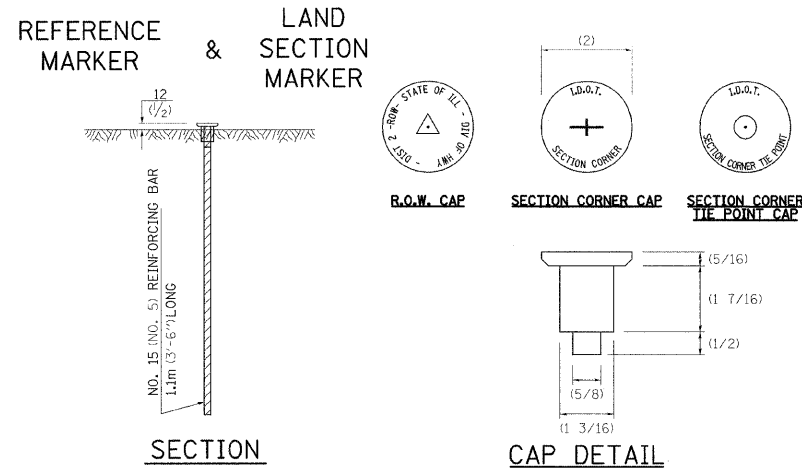
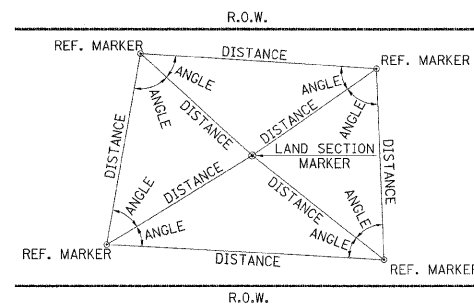


LAND SECTION & REFERENCE MARKERS



METHOD OF REFERENCING MARKERS



- USE INSTRUMENT TIES TO NEARBY LAND-MARKS (STEEPLES, TOWERS, SILOS, ETC...)
- IN CULTIVATED FIELDS, SET 600(2') OR MORE BELOW GROUND SURFACE.
- IN FENCE LINE OR PROTECTED AREA SET TOP AT GROUND LEVEL.

ALL DIMENSIONS ARE IN MILLIMETERS (INCHES) UNLESS OTHERWISE NOTED.

METHOD OF REFERENCING POINTS
 REFERENCE MARKERS SHALL BE USED TO TIE IN PERMANENT LAND SECTION AND 1/4 SECTION CORNERS. WHERE LAND SECTION MARKERS FALL IN THE SHOULDERS OR GRAVEL SURFACES, THE TOP OF THE BAR SHALL BE KEPT 75(3) BELOW THE SURFACE. LAND SECTION MARKERS LOCATED IN TRAFFIC LANES SHALL NOT BE REPLACED.
 METAL CAPS SHALL BE PLACED ON TOP OF THE REINFORCEMENT BAR. THERE ARE 3 TYPES OF CAPS, ONE FOR THE RIGHT-OF-WAY CORNERS, ONE FOR THE SECTION CORNERS AND ONE FOR THE SECTION CORNER TIE POINTS. THE CAPS WILL BE SUPPLIED BY IDOT, CALL CHIP CORDELL (815) 284-5370 A MINIMUM OF ONE WEEK BEFORE THE CAPS ARE NEEDED
 REVISED - 4-22-05

LAND SECTION & REFERENCE MARKERS 63.4

LETTERING FOR NAME PLATE

STATION
 BUILT 200 BY
 STATE OF ILLINOIS
 RTE. SEC.
 FA PROJECT
 LOADING HS 20
 STR. NO.

SEE STD. 515001

STATION	STRUCTURE NO.
10448+72	089-1090
10584+05	089-1091
10655+41	089-1092
10670+72	089-1100
10710+42	089-1069
10714+46	089-1094
10767+68	089-1101
10813+56	089-1093
10854+01	101-1094

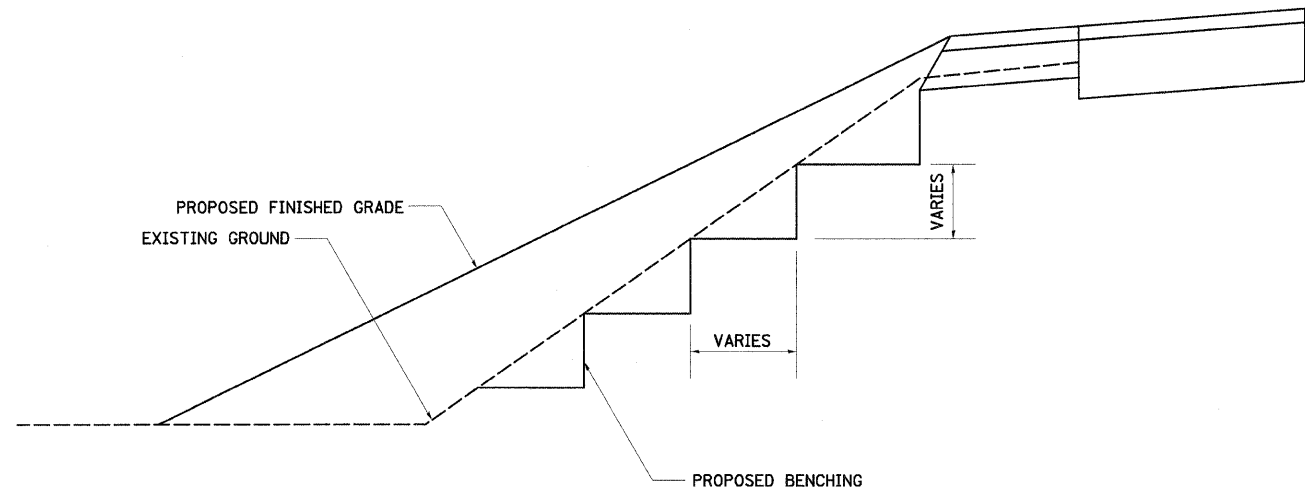
STATION	STRUCTURE NO.
10894+20	101-1320
10968+79	101-2048
10990+83	101-1088
10998+25	101-1319
11025+71	101-2049
11054+39	101-1083
11075+29	101-1082
109+39	101-1089
114+42	101-1051

ALL DIMENSIONS ARE IN MILLIMETERS (INCHES) UNLESS OTHERWISE NOTED.

REVISED - 11-01-07

LETTERING FOR NAME PLATE 89.4

TYPICAL BENCHING ON EXISTING EMBANKMENT



REVISED - 2-22-06

TYPICAL BENCHING ON EXISTING EMBANKMENT 50.4

TREE REPLACEMENT SCHEDULE

CODE NUMBER	SCIENTIFIC NAME	COMMON NAME	SIZE	UNIT	QUANTITY
A2006514	QUERCUS BICOLOR	SWAMP WHITE OAK	1 3/4" CALIPER B&B	EACH	10
A2006714	QUERCUS MACROCARPA	BUR OAK	1 3/4" CALIPER B&B	EACH	15
A2007814	TILIA AMERICANA	AMERICAN LINDEN/BASSWOOD	1 3/4" CALIPER B&B	EACH	15
B2000562	AMELANCHIER CANADENSIS	SHADBLOW SERVICEBERRY	4' HEIGHT, SHRUB FORM, B&B	EACH	24
B2004514	MALUS RED JEWEL	RED JEWEL CRABAPPLE	1 3/4" CALIPER B&B	EACH	25
B2004814	MALUS SARGENTII	SARGENT CRABAPPLE	1 3/4" CALIPER B&B	EACH	30
C2001748	CORNUS SERICEA	CARDINAL REDOSIER DOGWOOD	4' HEIGHT, SHRUB FORM, B&B	EACH	50
D2002272	PICEA PUGENS GLAUCA	COLORADO BLUE SPRUCE	6' HEIGHT, CALIPER B&B	EACH	15
D2003172	PSUEDOTSUGA MENZIESII	DOUGLAS FIR	6' HEIGHT, CALIPER B&B	EACH	10

ALL DIMENSIONS ARE IN MILLIMETERS (INCHES) UNLESS OTHERWISE NOTED.

REVISED - 8-10-05

TREE REPLACEMENT SCHEDULE 90.4

*111RS-4, 111BR-1, Yg-15d-RS-1, & (W-15d)T-1

REVISED -	REGION 2 / DISTRICT 2 STANDARD	F.A. RTE.	SECTION	COUNTY	TOTAL SHEETS	SHEET NO.
REVISED -		505	*	STEPHENSON	335	181
REVISED -		CONTRACT NO. 64970				
REVISED -		SCALE: 1:50	SHEET NO. OF SHEETS STA. TO STA.		FED. ROAD DIST. NO. 2 ILLINOIS FED. AID PROJECT	

PLOT DATE = 3/2/2009
 FILE NAME = k:\11195800\11_75_3p_east\cond\design\95821.Dist.Stud.dgn
 PLOT SCALE = 1:50
 USER NAME = J Tracey
 MODEL = Dist 504 19