

INDEX OF SHEETS

1. COVER SHEET
2. GENERAL NOTES
3. SUMMARY OF QUANTITIES
4. TYPICAL SECTIONS
5. STAGING DETAILS
6. TEMPORARY CONCRETE BARRIER
7. PAVEMENT MARKING
8. GENERAL PLAN AND ELEVATION
9. PLAN AND CROSS SECTION REMOVAL DETAILS
10. PLAN AND CROSS SECTION CONSTRUCTION DETAILS
11. MISCELLANEOUS CONSTRUCTION DETAILS
12. PREFORMED JOINT STRIP SEAL
13. BAR SPLICER ASSEMBLY
14. DECK DRAIN DETAILS

STANDARDS

- | | |
|-----------|--|
| 000001-05 | STANDARD SYMBOLS, ABBREVIATIONS AND PATTERNS |
| 001001-02 | AREAS OF REINFORCEMENT BARS |
| 001006 | DECIMAL OF AN INCH AND OF A FOOT |
| 701001-02 | OFF-ROAD OPERATIONS 2L, 2W, MORE THAN 15' (4.5 m) AWAY |
| 701006-03 | OFF-ROAD OPERATIONS 2L, 2W, 15' (4.5 m) TO 24" (600 mm) FROM PAVEMENT EDGE |
| 701201-03 | LANE CLOSURE, 2L, 2W, DAY ONLY, FOR SPEEDS ≥ 45 MPH |
| 701301-03 | LANE CLOSURE, 2L, 2W, SHORT TIME OPERATIONS |
| 701316-04 | LANE CLOSURE, 2L, 2W, BRIDGE REPAIR, FOR SPEEDS ≥ 45 MPH |
| 701901-01 | TRAFFIC CONTROL DEVICES |

**STATE OF ILLINOIS
DEPARTMENT OF TRANSPORTATION**

DIVISION OF HIGHWAYS

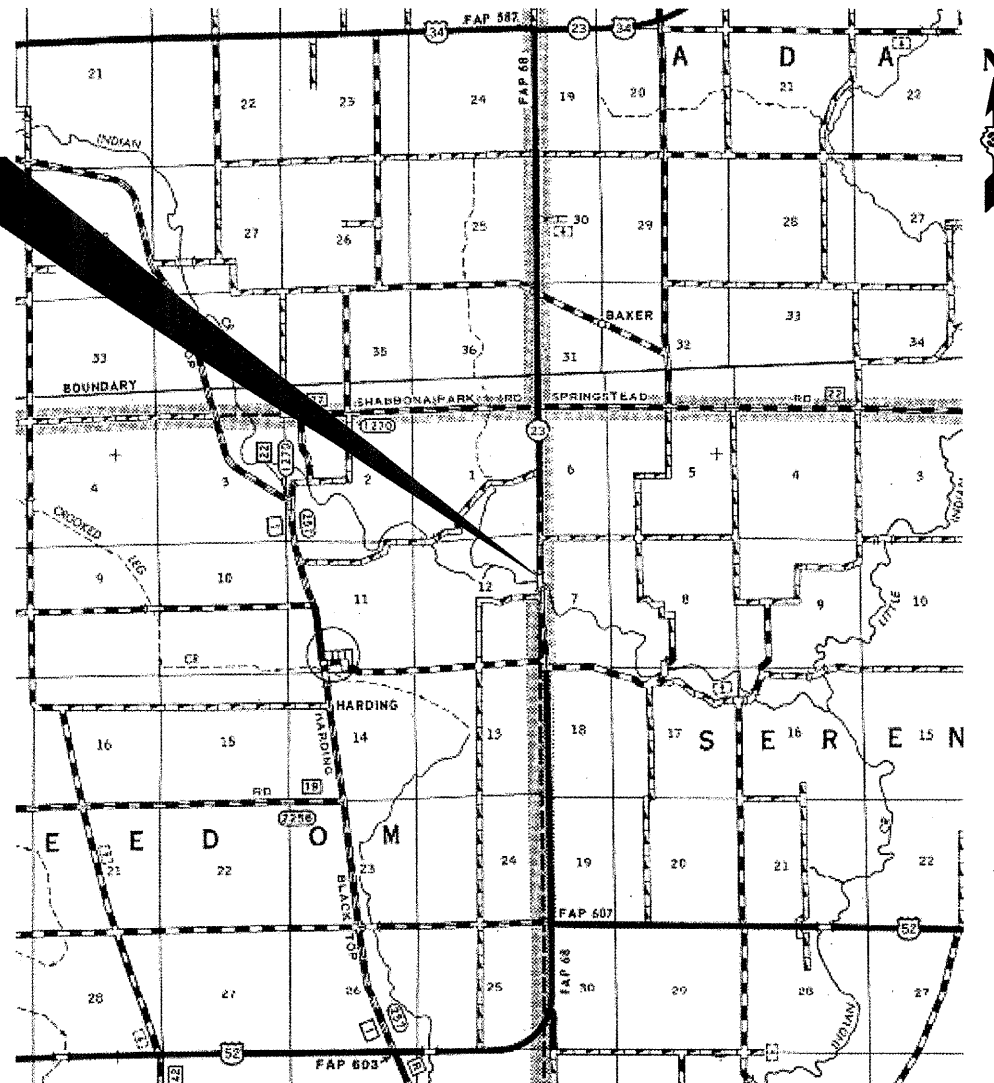
**PROPOSED
HIGHWAY PLANS**

**FAP ROUTE 68 (IL 23)
SECTION (3BR)I**

**BRIDGE REPAIR
LASALLE COUNTY**

C-93-072-09

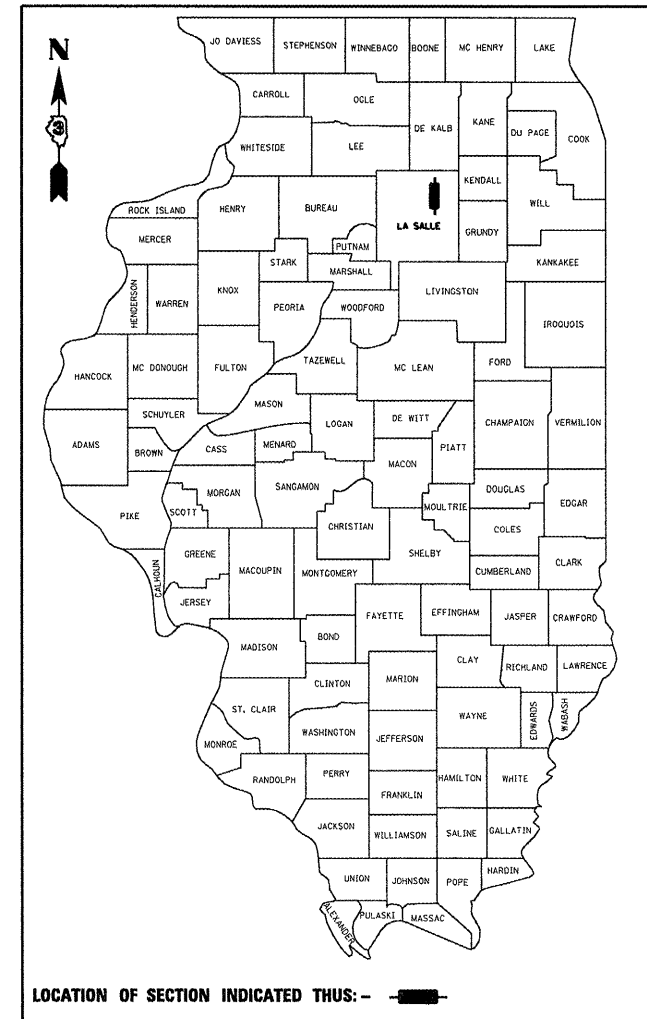
PROJECT LOCATION
SN 050-0159
CARRYING FAP ROUTE 68 (IL 23)
OVER INDIAN CREEK
2.63 MILES NORTH OF US ROUTE 52



POINT LOCATION

F.A.P. RTE.	SECTION	COUNTY	TOTAL SHEETS	SHEET NO.
68	(3BR)I	LASALLE	14	1
		ILLINOIS	CONTRACT NO. 66936	

D-93-002-09



LOCATION OF SECTION INDICATED THUS: -

FUNCTIONAL CLASSIFICATION

RURAL - MINOR ARTERIAL

F.A.P. ROUTE 68 (IL 23)

2007 ADT = 1900

P.V = 81.6% M.U. = 10.5% S.U. = 7.9%

J.U.L.I.E.
JOINT UTILITY LOCATION INFORMATION FOR EXCAVATION
1-800-892-0123
OR 811

PROJECT ENGINEER: JOE KANNEL
UNIT CHIEF: RON WOODSHANK
TOWNSHIP: SERENA
CONTRACT NO. 66936

STATE OF ILLINOIS
DEPARTMENT OF TRANSPORTATION
DIVISION OF HIGHWAYS

SUBMITTED 4/8 2009
George Pagan
DEPUTY DIRECTOR OF HIGHWAYS, REGION ENGINEER

May 8, 2009
Charles G. Ingersoll
ENGINEER OF DESIGN AND ENVIRONMENT

May 8, 2009
Christine M. Reed
DIRECTOR OF HIGHWAYS, CHIEF ENGINEER

**PRINTED BY THE AUTHORITY
OF THE STATE OF ILLINOIS**