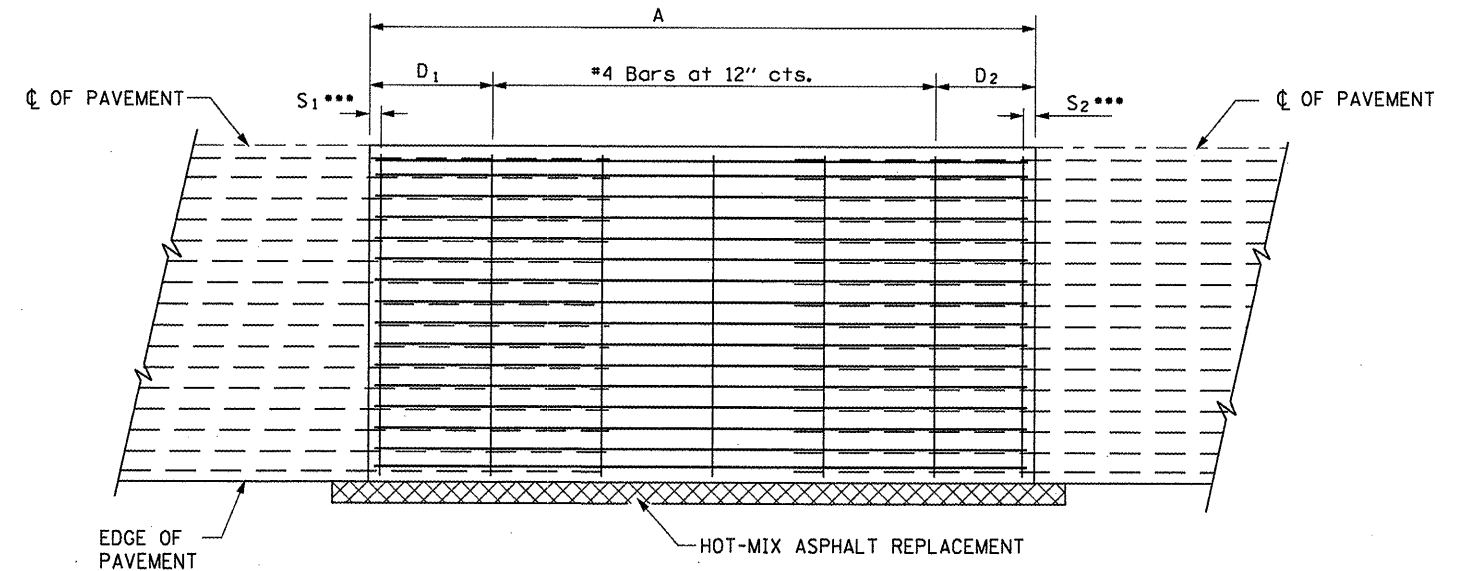
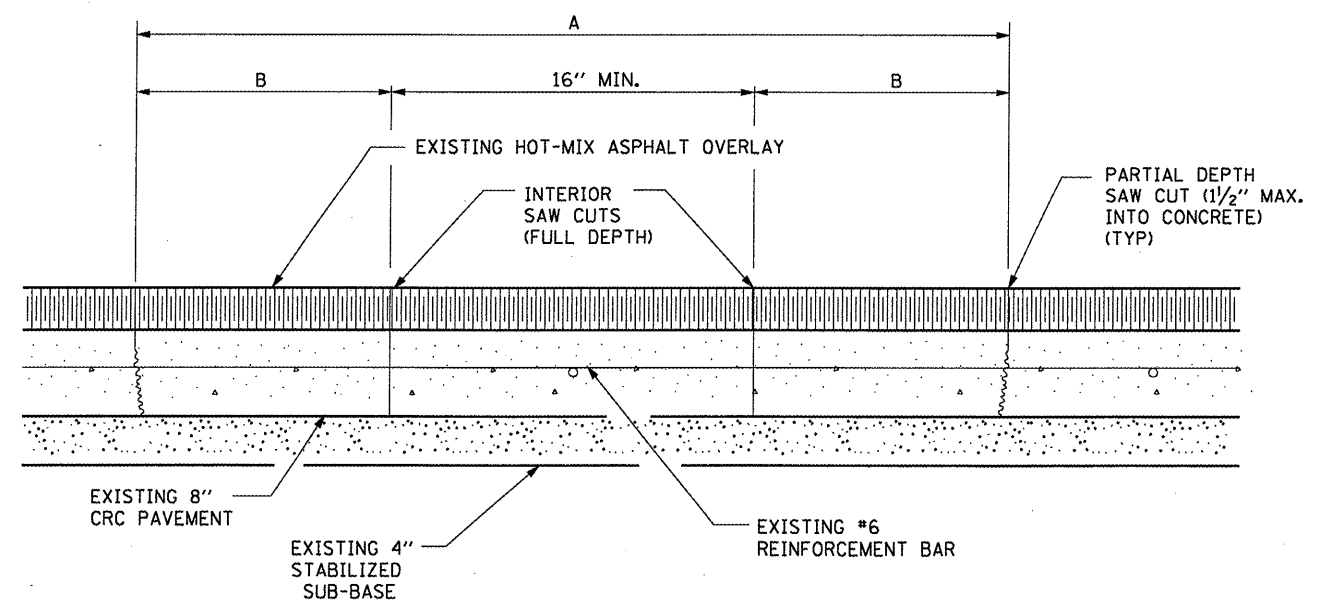


EXISTING PAVEMENT SAWING DETAIL
(AGAINST BITUMINOUS SHOULDER)

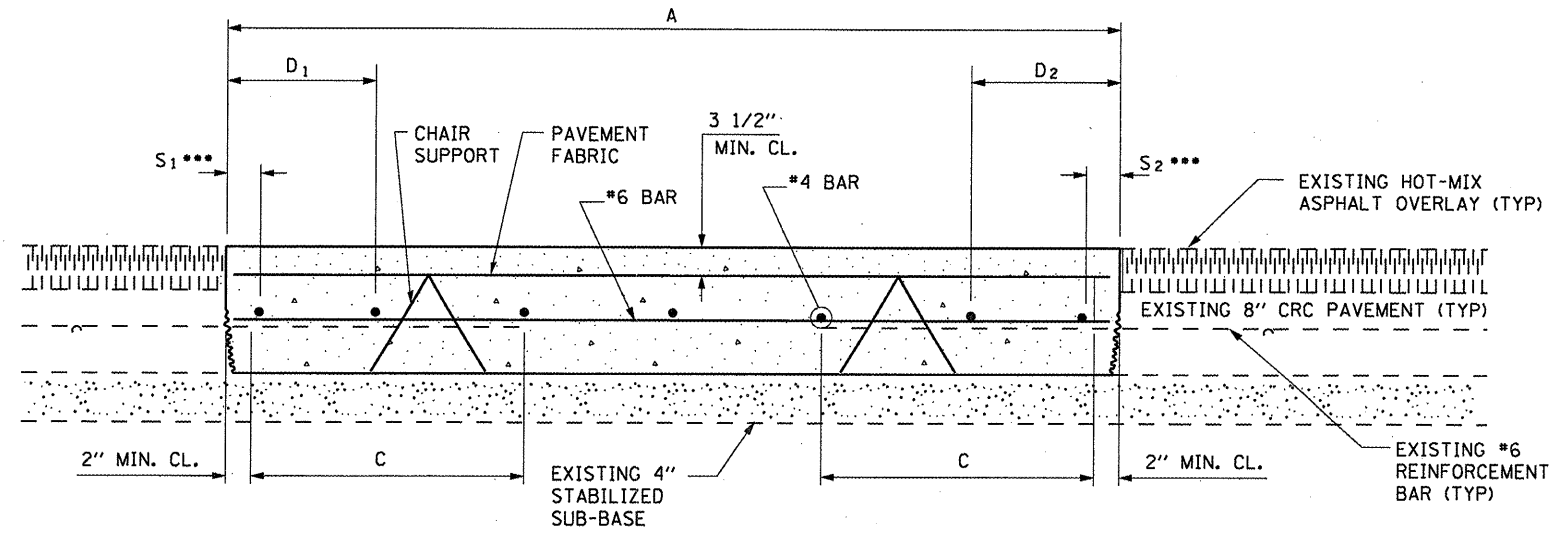
EXISTING LONGITUDINAL REINFORCEMENT BARS	A (min.)	B (min.)	C (min.)
No. 6	6'-0"	24"	19"



PROPOSED PAVEMENT DETAIL
(AGAINST BITUMINOUS SHOULDER)



EXISTING PAVEMENT SAW CUTTING DETAIL



PROPOSED CLASS A PATCHING DETAIL

- NOTES:**
- EVERY 3rd INTERSECTION MUST BE TIED
 - LAP NEW REINFORCEMENT WITH EXISTING LONGITUDINAL REINFORCEMENT
 - VARIABLES: WHERE S₁ AND S₂ ARE 2 1/2" MIN. AND 12" MAX. D₁ = 2(S₁) AND D₂ = 2(S₂)

FILE NAME =	USER NAME = woodshankr1	DESIGNED - RON WOODSHANK	REVISED -
c:\pwwork\pwwork\woodshankr1\dms91741\0366965-details.dgn		DRAWN - RON WOODSHANK	REVISED -
PLOT SCALE = 100.0000 / IN.		CHECKED -	REVISED -
PLOT DATE = Mar 31, 2009 - 01:45:49 PM		DATE -	REVISED -

STATE OF ILLINOIS
DEPARTMENT OF TRANSPORTATION

CLASS A PATCHING DETAILS

SCALE: SHEET NO. 1 OF 1 SHEETS

* FAI 57, FAS 310				
RTE.	SECTION	COUNTY	TOTAL SHEETS	SHEET NO.
• D3 PAVEMENT PATCHING 2010-3		KANKAKEE	14	12
			CONTRACT NO. 66965	
ILLINOIS				