

STATE OF ILLINOIS
DEPARTMENT OF TRANSPORTATION
DIVISION OF HIGHWAYS

PROPOSED
HIGHWAY PLANS

FAP 317 (ROUTE US 150)
SECTION : (117,11)RS-3
PROJECT NHF-0317(082)
TYPE of IMPROVEMENT: RESURFACING
PEORIA COUNTY
C-94-121-02

F.A.P. RTE.	SECTION	COUNTY	TOTAL SHEETS	SHEET NO.
317	(117, 11)RS-3	PEORIA	48	1
		ILLINOIS	CONTRACT NO. 68293	

INDEX OF SHEETS

- 1 COVER SHEET
- 2-3 COMMITMENTS AND GENERAL NOTES
- 4-6 SUMMARY OF QUANTITIES
- 7 PROJECT LINE DIAGRAM
- 8-18 TYPICAL SECTIONS
- 19-23 SCHEDULES OF QUANTITIES
- 24-31 PLAN SHEETS
- 32-35 TRAFFIC SIGNAL DETAILS
- 36 PAVEMENT PATCHING DETAIL
- 37-48 CADD STANDARDS

HIGHWAY STANDARDS:

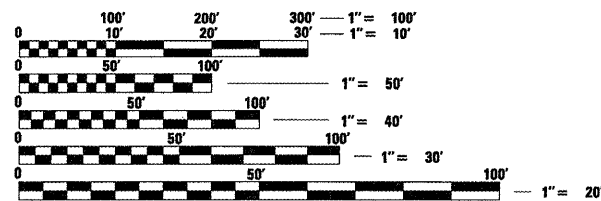
- 606001-04 701901-01
- 630001-08 780001-02
- 635006-03 781001-03
- 635011-02 857001-01
- 701101-02 873001-02
- 701601-06 880006-01
- 701701-06 886001-01
- 701701-06 886006-01

442201-03

CADD STANDARDS:

- 406101-D4 631011-D4
- 406501-D4 635101-D4
- 440001-D4 780001-D4
- 630101-D4

ADT - 29,800
 MU - 1,150

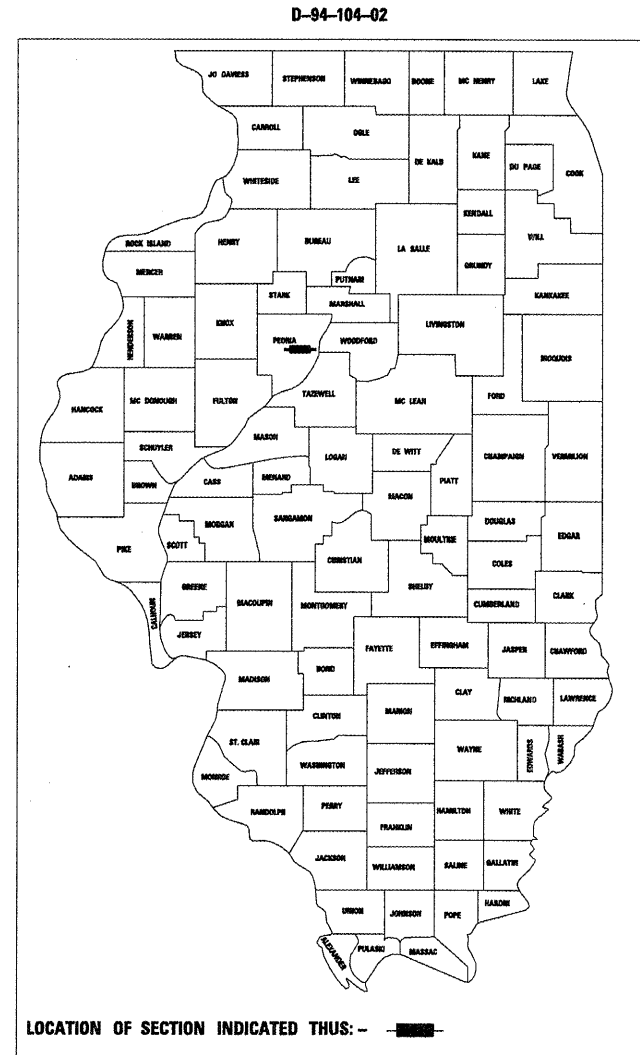


FULL SIZE PLANS HAVE BEEN PREPARED USING STANDARD ENGINEERING SCALES. REDUCED SIZED PLANS WILL NOT CONFORM TO STANDARD SCALES. IN MAKING MEASUREMENTS ON REDUCED PLANS, THE ABOVE SCALES MAY BE USED.

J.U.L.I.E.
 JOINT UTILITY LOCATION INFORMATION FOR EXCAVATION
 1-800-892-0123
 OR 811

PROJECT ENGINEER: CHRISTOPHER MAUSHARD
PROJECT MANAGER: SOBHI LABABIDI
 CATALOG NO. 032642-00D
 CONTRACT NO. 68293

GROSS LENGTH = 8025 FT. = 1.52 MILE
 NET LENGTH = 8025 FT. = 1.52 MILE



LOCATION OF SECTION INDICATED THUS: - [black rectangle] -



PROJECT BEGINS
STA. 218 + 97

PROJECT ENDS WB
STA. 299 + 22

PROJECT ENDS EB
STA. 297 + 30

Resurfacing on US 150 (War Memorial Drive)
from the I-74 interchange to Knoxville Ave.

STATE OF ILLINOIS
 DEPARTMENT OF TRANSPORTATION
 DIVISION OF HIGHWAYS

SUBMITTED *March 19, 2009*

[Signature]
 DEPUTY DIRECTOR OF HIGHWAYS, REGION ENGINEER

May 8, 2009
Charles J. Ingersoll
 ENGINEER OF DESIGN AND ENVIRONMENT

May 8, 2009
Christine M. Reed
 DIRECTOR OF HIGHWAYS, CHIEF ENGINEER

PRINTED BY THE AUTHORITY
OF THE STATE OF ILLINOIS