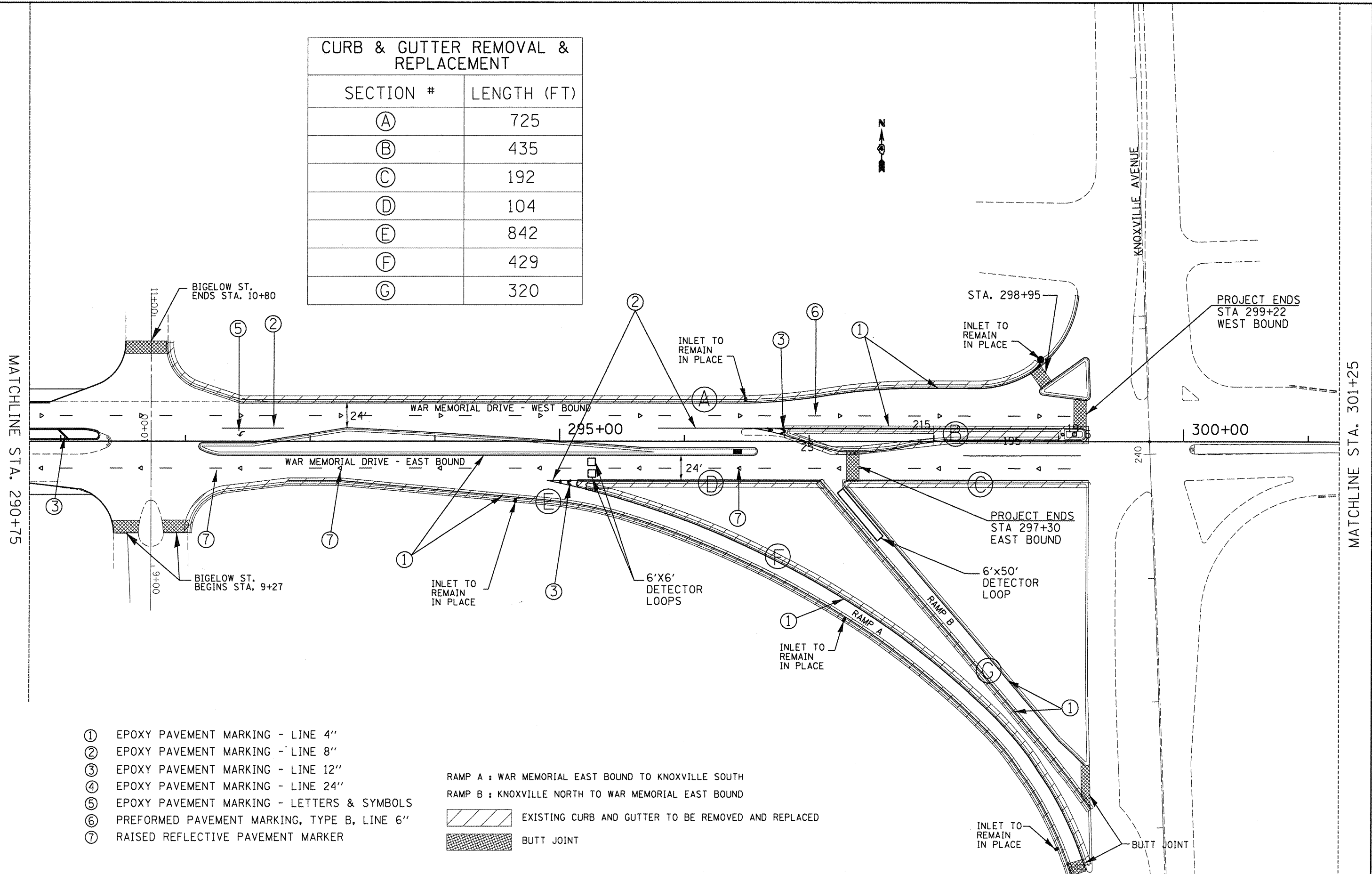


CURB & GUTTER REMOVAL & REPLACEMENT	
SECTION #	LENGTH (FT)
Ⓐ	725
Ⓑ	435
Ⓒ	192
Ⓓ	104
Ⓔ	842
Ⓕ	429
Ⓖ	320



- ① EPOXY PAVEMENT MARKING - LINE 4"
- ② EPOXY PAVEMENT MARKING - LINE 8"
- ③ EPOXY PAVEMENT MARKING - LINE 12"
- ④ EPOXY PAVEMENT MARKING - LINE 24"
- ⑤ EPOXY PAVEMENT MARKING - LETTERS & SYMBOLS
- ⑥ PREFORMED PAVEMENT MARKING, TYPE B, LINE 6"
- ⑦ RAISED REFLECTIVE PAVEMENT MARKER

RAMP A : WAR MEMORIAL EAST BOUND TO KNOXVILLE SOUTH
 RAMP B : KNOXVILLE NORTH TO WAR MEMORIAL EAST BOUND

EXISTING CURB AND GUTTER TO BE REMOVED AND REPLACED
 BUTT JOINT

FILE NAME = D468293-plan sheet1.dgn	USER NAME = jebabidam	DESIGNED - DRAWN -	REVISED - REVISED -
	PLOT SCALE = 72.5936' / IN.	CHECKED -	REVISED -
	PLOT DATE = 3/19/2009	DATE -	REVISED -

**STATE OF ILLINOIS
DEPARTMENT OF TRANSPORTATION**

US 150 PLAN SHEET

SCALE: _____ SHEET NO. _____ OF _____ SHEETS STA. _____ TO STA. _____

F.A.P. RTE. 317	SECTION 117.117RS-3	COUNTY PEORIA	TOTAL SHEETS 48	SHEET NO. 31
CONTRACT NO. 68293			ILLINOIS FED. AID PROJECT	