

F.A.P. RTE.	SECTION	COUNTY	TOTAL SHEETS	SHEET NO.
685/618	36(RS-1;C-2)	MCDONOUGH	52	1
		ILLINOIS	CONTRACT NO. 68406	

INDEX OF SHEETS

1. COVER SHEET
- 2-3. COMMITMENTS & GENERAL NOTES
- 4-9. SUMMARY OF QUANTITIES
- 10-14. TYPICAL SECTIONS
15. TABULATION OF RESURFACING QUANTITIES
- 16-19. SCHEDULE OF QUANTITIES
20. LINE DIAGRAM
- 21-22. STAGING PLANS
- 23-24. STRUCTURE PLANS
25. UNSUITABLE EXCAVATION TREATMENT DETAIL
26. DETAIL OF EXCAVATION AND BACKFILL
27. BOX CULVERT EXTENSION DETAIL
28. CLASS SI CONCRETE COLLAR DETAIL
29. ENTRANCES, SIDE ROADS, AND MAILBOX TURNOUTS DETAIL
30. TYPICAL APPLICATION OF SILT FILTER FENCE
- 31-33. BUTT JOINTS
34. HMA SURFACE REMOVAL DETAIL
- 35-36. PRECAST END SECTION (SPECIAL)
- 37-38. GUARDRAIL EROSION CONTROL TREATMENTS
- 39-41. GUARDRAIL AND BARRIER WALL DELINEATION
- 42-43. TYPICAL PAVEMENT MARKINGS
- 44-52. CROSS SECTIONS
HIGHWAY STANDARDS

HIGHWAY STANDARDS

280001-04	442201-03	630101-08	630301-05
635006-03	635011-02	701001-02	701006-03
701011-02	701301-03	701306-02	701311-03
701321-10	701336-05	701901-01	780001-02
781001-03			

CADD STANDARDS

280001-D4	406101-D4	440001-D4
540001-D4	540401-D4	630101-D4
635101-D4	780001-D4	

ADT = 2850 (2006)
MU = 6 %

FULL SIZE PLANS HAVE BEEN PREPARED USING STANDARD ENGINEERING SCALES. REDUCED SIZED PLANS WILL NOT CONFORM TO STANDARD SCALES. IN MAKING MEASUREMENTS ON REDUCED PLANS, THE SCALES PROVIDED MAY BE USED.

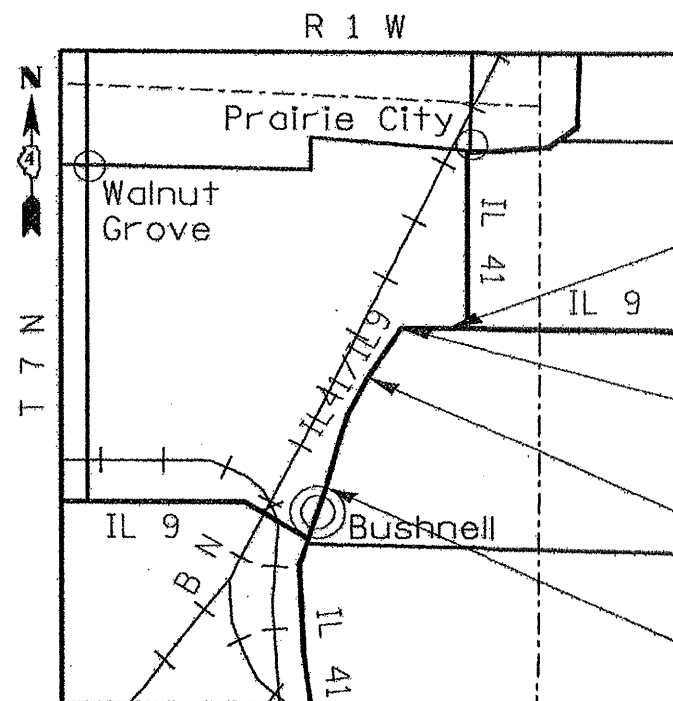
J.U.L.I.E.
JOINT UTILITY LOCATION INFORMATION FOR EXCAVATION
1-800-892-0123
OR 811

PROJECT ENGINEER: M. ADDIS
PROJECT MANAGER: M. ADDIS
CONTRACT NO. 68406
CATALOG NO. 032913-00D

STATE OF ILLINOIS DEPARTMENT OF TRANSPORTATION DIVISION OF HIGHWAYS

PROPOSED HIGHWAY PLANS

FAP 685 / 618 (IL 9 / IL 41)
SECTION 36(RS-1;C-2)
PROJECT ACF-0685 (029)
MCDONOUGH COUNTY
C-94-082-04



PROJECT BEGINS
STA. 622+00

CULVERT REPLACEMENT
STA. 669+76
S.N. 055-1001 (OLD);
S.N. 055-2506 (NEW)

BRIDGE OMISSION
STA. 682+84 TO 690+16.5

PROJECT ENDS
STA. 780+45

D-94-040-04



LOCATION OF SECTION INDICATED THIS: - - - - -

DESCRIPTION OF WORK

THIS PROJECT CONSISTS OF PAVEMENT PATCHING, HOT-MIX ASPHALT SURFACE REMOVAL AND OVERLAY, BOX CULVERT REPLACEMENT, AND OTHER COLLATERAL WORK.

STATE OF ILLINOIS
DEPARTMENT OF TRANSPORTATION
DIVISION OF HIGHWAYS
SUBMITTED APRIL 19, 2009
DEPUTY DIRECTOR OF HIGHWAYS, REGION ENGINEER
May 8, 2009
Charles A. Ingersoll
ENGINEER OF DESIGN AND EQUIPMENT
May 8, 2009
Christine M. Reed
DIRECTOR OF HIGHWAYS, CHIEF ENGINEER

PRINTED BY THE AUTHORITY
OF THE STATE OF ILLINOIS

GROSS LENGTH = 15,845 FT = 3.001 MILES
NET LENGTH = 15,112.5 FT = 2.862 MILES