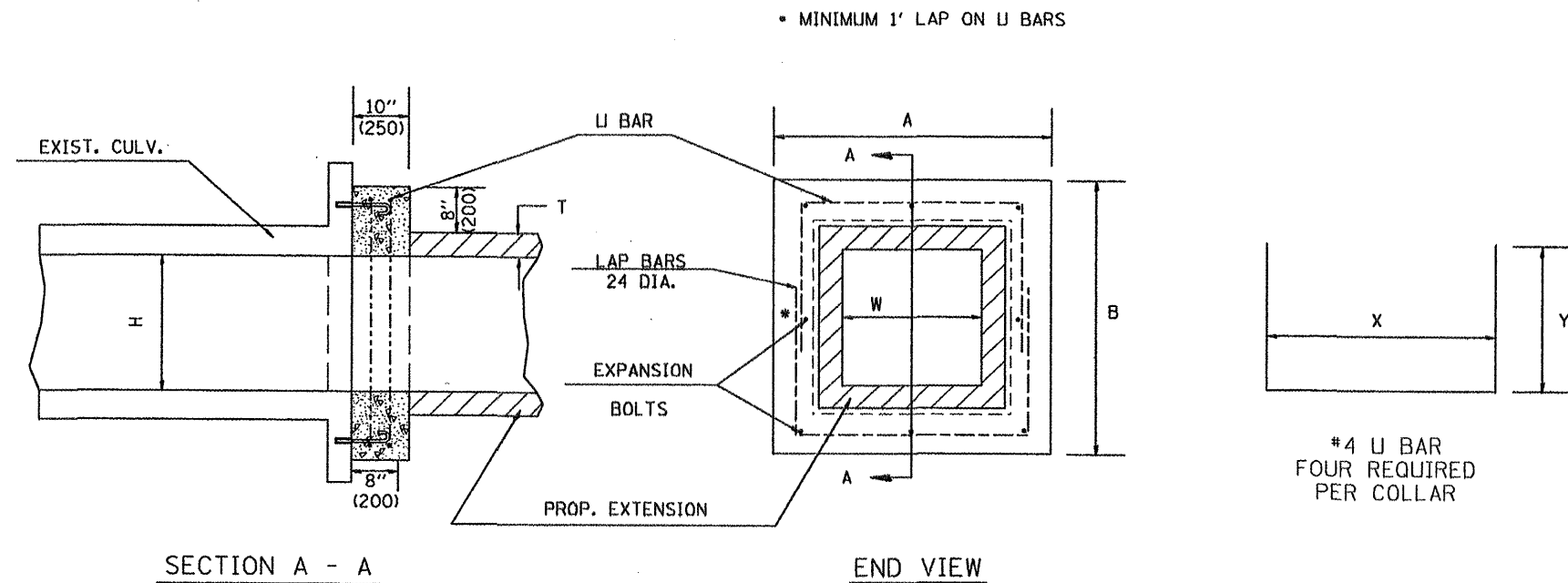


DESIGNER NOTE:
USE CLASS SI CONCRETE COLLAR PAY ITEM (XX007906) IF PAYING FOR THIS BY EACH.



GENERAL NOTES

1. The collar shall be constructed entirely of CLASS SI CONCRETE and in accordance with the applicable portions of section 503 of the Standard Specifications. REINFORCEMENT BARS shall conform to section 508.
2. Expansion bolts shall consist of approved expansions anchors, and 3/4" (M20) hook bolts which conform to Section 1006.09. These bolts shall extend at least 8"(200) into the new concrete.
3. All concrete, reinforcement bars, and expansion bolts shall be included in the contract unit price per Each for Class SI Concrete Collar.

* Dimensions for ASTM C789.

DIMENSIONS

EXISTING BOX		A	B	T *	EACH COLLAR				
W ft (mm)	H ft (mm)				CL SI CU YD (m ³)	REINFORCEMENT BARS		EXPANSION BOLTS	
					X	Y	POUNDS (kg)	NO.	
2 (600)	2 (600)	4'-0" (1.22m)	4'-0" (1.22m)	4(100)	0.37(0.28)	3'-4" (1.02m)	26(660)	20 (9)	8
3 (900)	2 (600)	5'-0" (1.52m)	4'-0" (1.22m)	4(100)	0.43(0.31)	4'-4" (1.32m)	26(660)	23 (10.5)	8

QUANTITIES

CALC. BY: _____ DATE: _____

CHECKED BY: _____ DATE: _____

QUANTITY CALCULATIONS ARE ON FILE AT THE DISTRICT 4 OFFICE, BUREAU OF PROJECT IMPLEMENTATION, DOCUMENTATION SECTION

01-01-97	RENUM. J-12.01, METRICS, NEW REVISION BOX, REVISED	T.P.
	TITLE BOX, ADDED QUANTITY CALCULATION BOX	
10-16-06	REV. TO 2007 SPEC., REINF. BARS COL.	M.A.

**STATE OF ILLINOIS
DEPARTMENT OF TRANSPORTATION**

CLASS SI CONCRETE COLLAR DETAIL

NOT TO SCALE SHEET 1 OF 1

All dimensions are in Inches (millimeters) unless otherwise noted.

F.A.P. RTE.	SECTION	COUNTY	TOTAL SHEETS	SHEET NO.
685/618	36(RS-11C-2)	MCDONOUGH	52	28
FED. ROAD DIST. NO. ILLINOIS FED. AID PROJECT			CONTRACT NO. 68406	