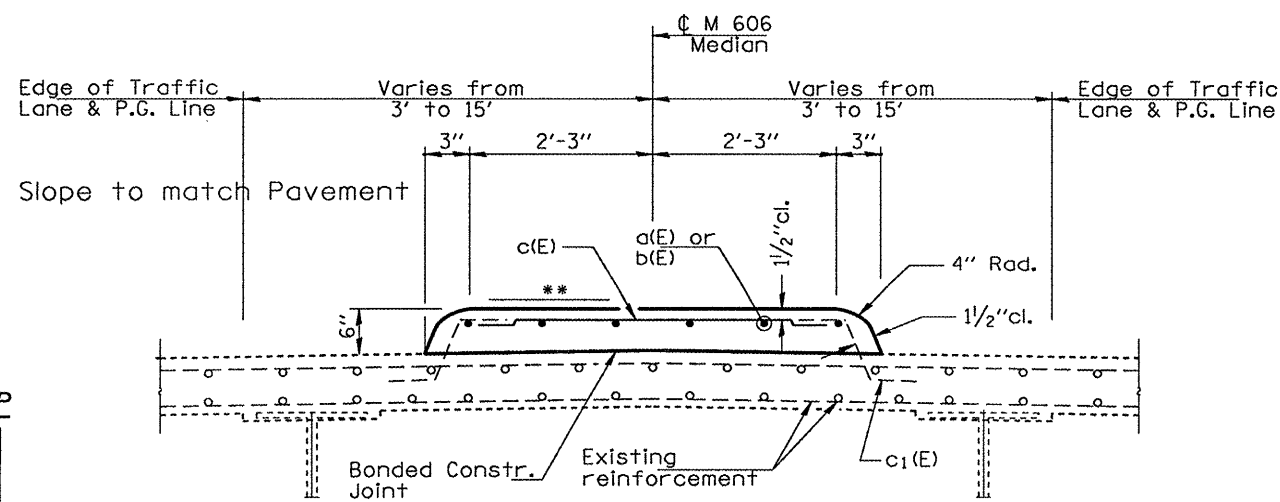


NEAR ABUTS.

NEAR MIDSPAN

**TRAFFIC & CONTROL**  
(Looking East)



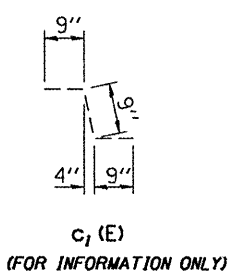
**MEDIAN SECTION**  
(see Std. 606301)

**MIN. BAR LAP**

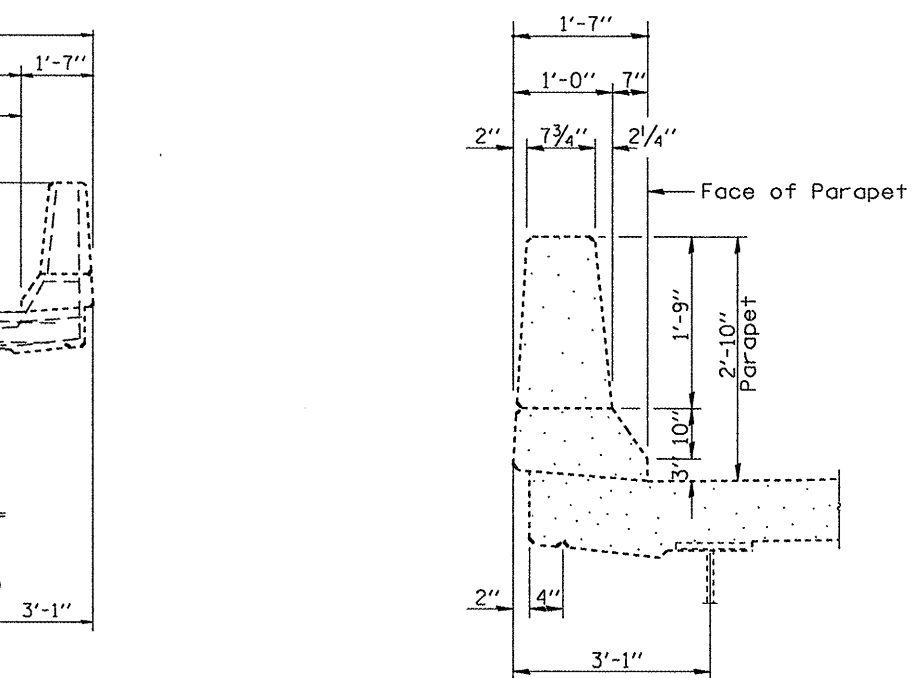
#4 - 1'-8"
#5 - 2'-2"
#6 - 2'-7"
#8 - 4'-6"

**NOTE**

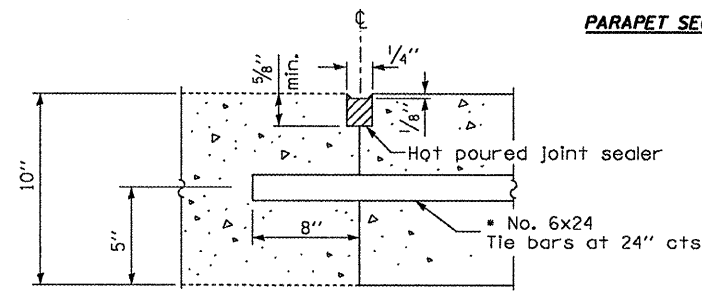
Reinforcement bars shall conform to the requirements of ASTM A 706 Gr 60. See Special Provisions.  
Reinforcement bars designated (E) shall be epoxy coated.  
Existing median reinforcement bars extending into the removal area shall be cleaned, straightened and incorporated into the new construction. Any reinforcement bars that are damaged during concrete removal shall be replaced with an approved bar splicer or anchorage system. Cost included with Concrete Removal.



**c<sub>1</sub>(E)**  
(FOR INFORMATION ONLY)

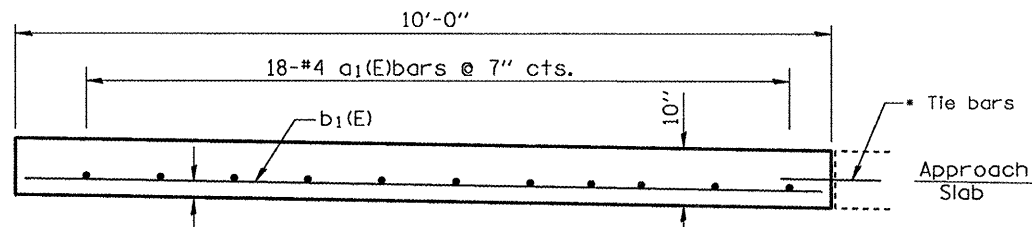


**PARAPET SECTION**



**DETAIL A**  
**LONGITUDINAL CONSTRUCTION JOINT**  
(TIE BAR GROUTED IN PLACE)

\* Epoxy grout tie bars in 8" min. holes according to Article 584 of the Standard Specifications. Cost included with Tie bars.



**APPROACH SHOULDER SECTION**  
(see Detail A)

**BILL OF MATERIAL**

Bar	No.	Size	Length	Shape
a(E)	10	#4	19'-6"	—
a <sub>1</sub> (E)	72	#4	11'-8"	—
b(E)	48	#5	30'-9"	—
b <sub>1</sub> (E)	84	#4	9'-8"	—
c(E)	272	#5	4'-0"	—
Concrete Superstructure				CU YD 44.8
Reinforcement Bars, Epoxy coated				LB 3910

SN.062-0050  
IL.17 over I-39

FILE NAME =	USER NAME = *USER*	DESIGNED - CEJ	REVISED - ---
*FILE#68729 SN062-0050 IL.17 over I-39		DRAWN - CEJ	REVISED - ---
		CHECKED - ---	REVISED - ---
		DATE - 01/26/2009	REVISED - ---

**STATE OF ILLINOIS**  
**DEPARTMENT OF TRANSPORTATION**

**CROSS SECTIONS**

SCALE: \_\_\_\_\_ SHEET NO. \_\_\_\_\_ OF \_\_\_\_\_ SHEETS STA. \_\_\_\_\_ TO STA. \_\_\_\_\_

F.A.P. RTE. 412	SECTION (G2-2HB-21)	COUNTY MARSHALL	TOTAL SHEETS 9	SHEET NO. 8
CONTRACT NO. 68729				
FED. ROAD DIST. NO. 4 ILLINOIS FED. AID PROJECT				