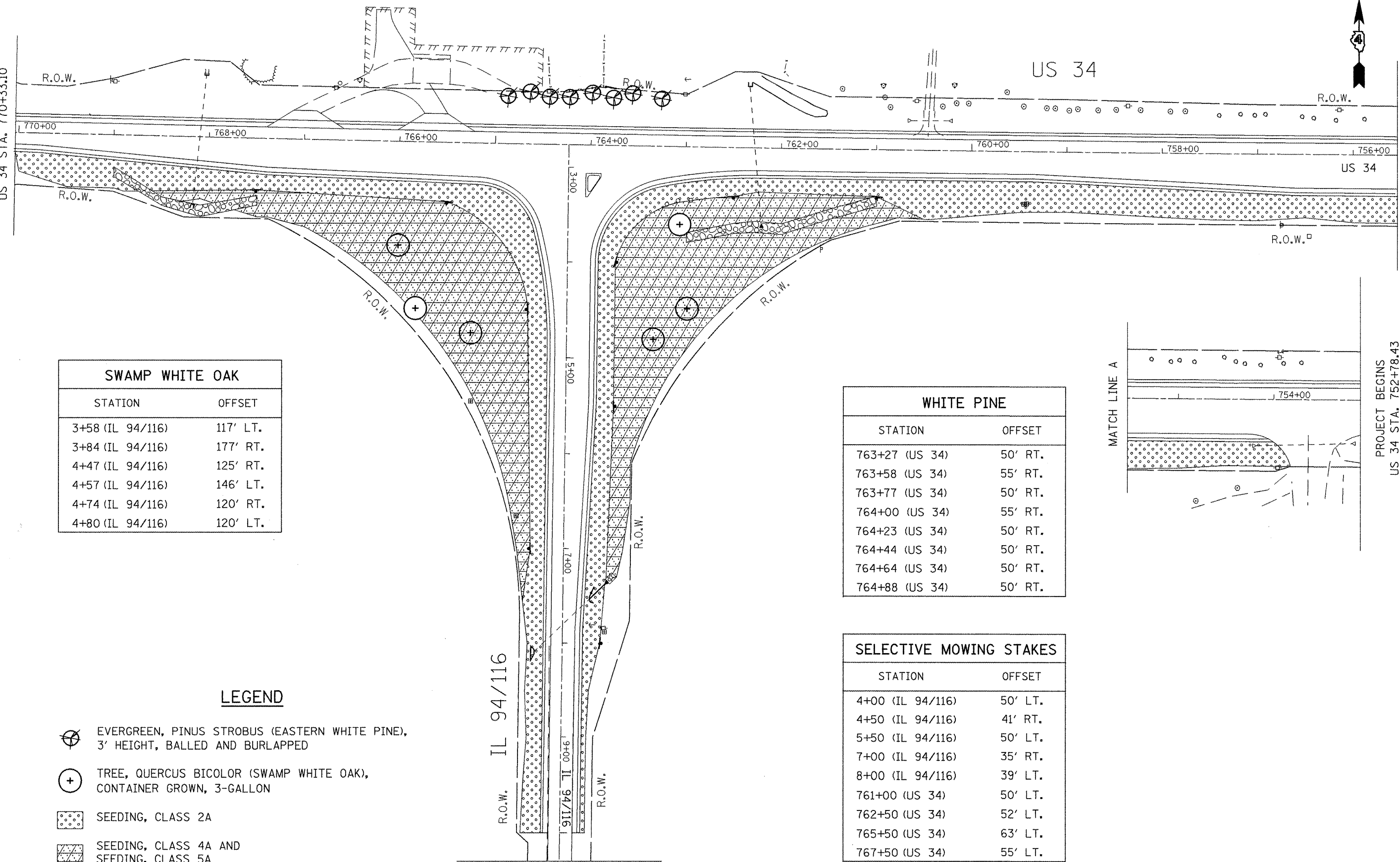




PROJECT ENDS
US 34 STA. 770+33.10

MATCH LINE A (BELOW)

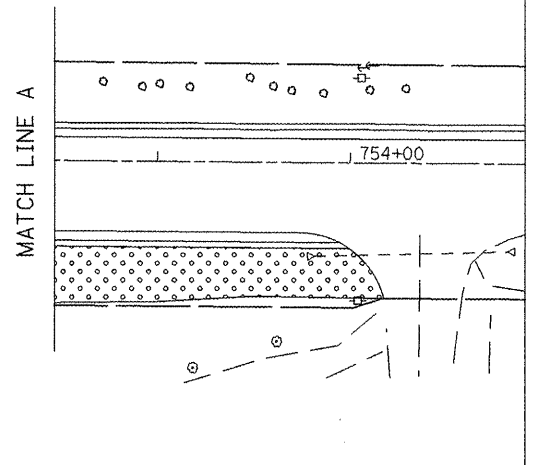
PROJECT BEGINS
US 34 STA. 752+78.43






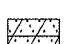

SWAMP WHITE OAK	
STATION	OFFSET
3+58 (IL 94/116)	117' LT.
3+84 (IL 94/116)	177' RT.
4+47 (IL 94/116)	125' RT.
4+57 (IL 94/116)	146' LT.
4+74 (IL 94/116)	120' RT.
4+80 (IL 94/116)	120' LT.

WHITE PINE	
STATION	OFFSET
763+27 (US 34)	50' RT.
763+58 (US 34)	55' RT.
763+77 (US 34)	50' RT.
764+00 (US 34)	55' RT.
764+23 (US 34)	50' RT.
764+44 (US 34)	50' RT.
764+64 (US 34)	50' RT.
764+88 (US 34)	50' RT.

SELECTIVE MOWING STAKES	
STATION	OFFSET
4+00 (IL 94/116)	50' LT.
4+50 (IL 94/116)	41' RT.
5+50 (IL 94/116)	50' LT.
7+00 (IL 94/116)	35' RT.
8+00 (IL 94/116)	39' LT.
761+00 (US 34)	50' LT.
762+50 (US 34)	52' LT.
765+50 (US 34)	63' LT.
767+50 (US 34)	55' LT.



LEGEND

-  EVERGREEN, PINUS STROBUS (EASTERN WHITE PINE), 3' HEIGHT, BALLED AND BURLAPPED
-  TREE, QUERCUS BICOLOR (SWAMP WHITE OAK), CONTAINER GROWN, 3-GALLON
-  SEEDING, CLASS 2A
-  SEEDING, CLASS 4A AND SEEDING, CLASS 5A
-  SELECTIVE MOWING STAKE WITH SIGN

PROJECT ENDS
IL 94 / 116 STA. 10+30.00

