

**SE QUADRANT - IL 94/116 & US 34 INTERSECTION**

| POINT | STATION             | OFFSET      | ELEVATION AT EDGE OF PVMT |
|-------|---------------------|-------------|---------------------------|
| A     | 762+24.97 (US 34)   | 24.0' LT.   | 695.59'                   |
| B     | 762+76.47 (US 34)   | 26.87' LT.  | 695.31'                   |
| C     | 763+27.39 (US 34)   | 35.09' LT.  | 694.95'                   |
| D     | 3+33.75 (IL 94/116) | 52.88' LT.  | 694.13'                   |
| E     | 3+99.81 (IL 94/116) | 24.0' LT.   | 694.53'                   |
| F     | 3+99.81 (IL 94/116) | 114.10' LT. |                           |
| G     | 762+22.84 (US 34)   | 523.98' LT. |                           |

**SW QUADRANT - IL 94/116 & US 34 INTERSECTION**

| POINT | STATION             | OFFSET      | ELEVATION AT EDGE OF PVMT |
|-------|---------------------|-------------|---------------------------|
| A     | 765+16.30 (US 34)   | 36.19' LT.  | 695.85'                   |
| B     | 3+27.12 (IL 94/116) | 52.32' RT.  | 694.21'                   |
| C     | 3+64.07 (IL 94/116) | 28.3' RT.   | 694.43'                   |
| D     | 3+95.49 (IL 94/116) | 21.17' RT.  | 694.68'                   |
| E     | 4+26.96 (IL 94/116) | 16.1' RT.   | 694.96'                   |
| F     | 4+58.90 (IL 94/116) | 13.0' RT.   | 695.41'                   |
| G     | 4+90.90 (IL 94/116) | 12.0' RT.   | 696.04'                   |
| H     | 4+90.41 (IL 94/116) | 513.14' RT. |                           |
| I     | 3+81.79 (IL 94/116) | 96.05' RT.  |                           |

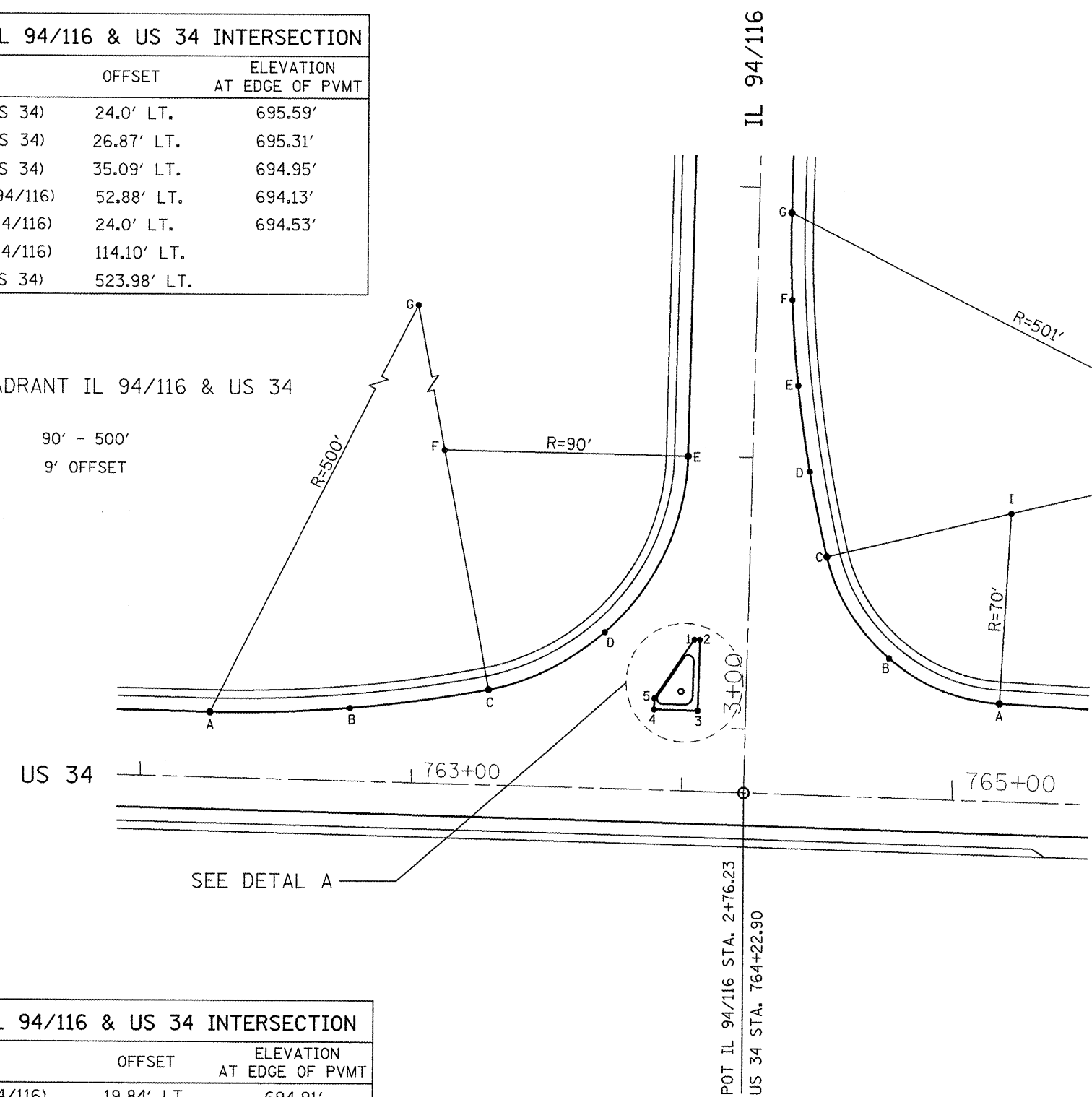


SE QUADRANT IL 94/116 & US 34

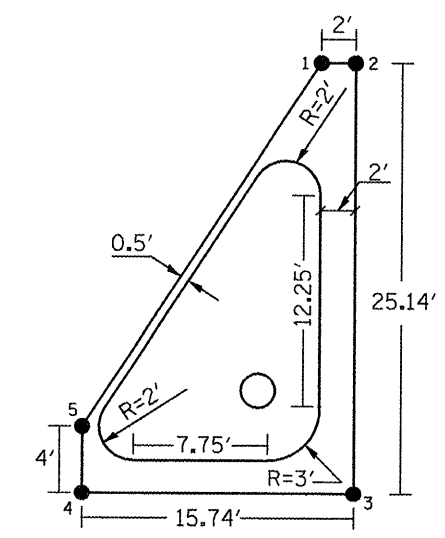
90' - 500'  
9' OFFSET

SW QUADRANT IL 94/116 & US 34

70' - 501'  
13' OFFSET



**DETAIL A**  
ISLAND AT THE INTERSECTION OF IL 94/116 & US 34



**SE QUADRANT - IL 94/116 & US 34 INTERSECTION**

| POINT | STATION             | OFFSET     | ELEVATION AT EDGE OF PVMT |
|-------|---------------------|------------|---------------------------|
| 1     | 3+31.47 (IL 94/116) | 19.84' LT. | 694.91'                   |
| 2     | 3+31.46 (IL 94/116) | 17.85' LT. | 694.94'                   |
| 3     | 764+04.80 (US 34)   | 30.0' LT.  | 695.44'                   |
| 4     | 763+89.07 (US 34)   | 30.0' LT.  | 695.36'                   |
| 5     | 763+89.07 (US 34)   | 34.0' LT.  | 695.30'                   |

|                          |                      |            |           |
|--------------------------|----------------------|------------|-----------|
| FILE NAME =<br>sh101.dgn | USER NAME = johnsonv | DESIGNED - | REVISED - |
|                          |                      | DRAWN -    | REVISED - |
|                          |                      | CHECKED -  | REVISED - |
|                          |                      | DATE -     | REVISED - |
|                          |                      |            |           |

**STATE OF ILLINOIS**  
**DEPARTMENT OF TRANSPORTATION**

**INTERSECTION AND ISLAND DETAIL**

NOT TO SCALE SHEET NO. 1 OF 1 SHEETS

|   |                            |                     |                    |                 |
|---|----------------------------|---------------------|--------------------|-----------------|
| F.A.P. RTE.<br>313/534                        | SECTION<br>6R-1r (109EX) R | COUNTY<br>HENDERSON | TOTAL SHEETS<br>81 | SHEET NO.<br>39 |
| CONTRACT NO. 68818                            |                            |                     |                    |                 |
| FED. ROAD DIST. NO. ILLINOIS FED. AID PROJECT |                            |                     |                    |                 |