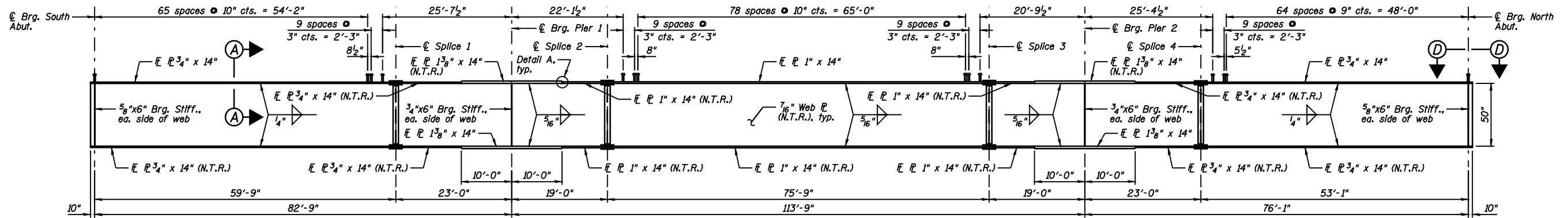
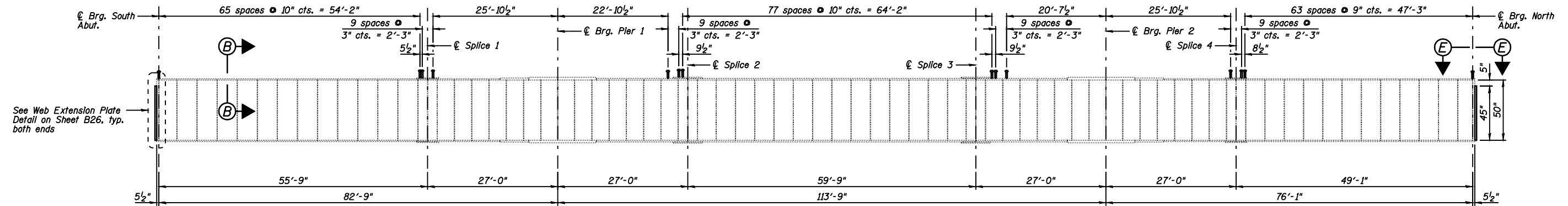


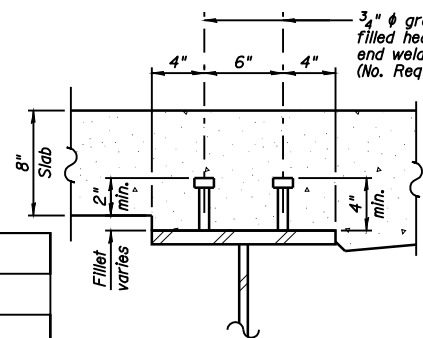
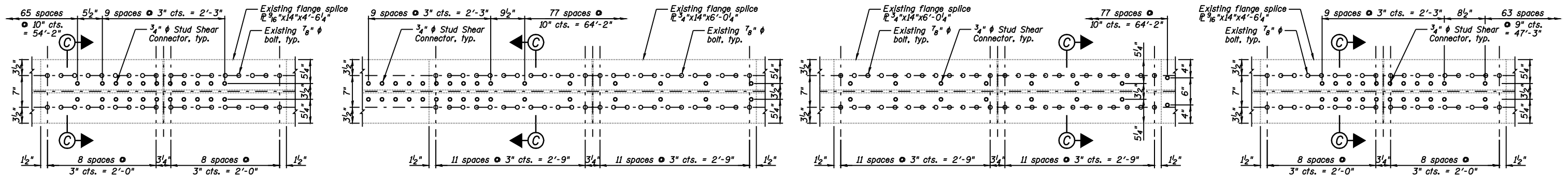
STATE OF ILLINOIS
DEPARTMENT OF TRANSPORTATION



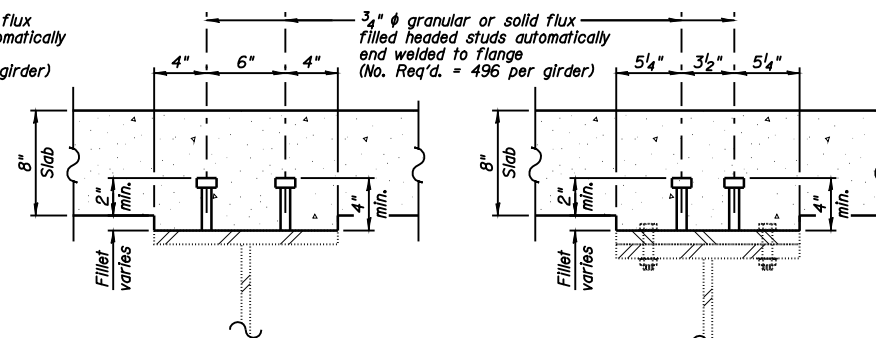
PROPOSED GIRDER ELEVATION



EXISTING GIRDER ELEVATION

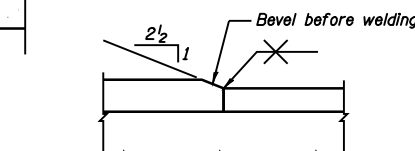


SECTION A-A



SECTION B-B

SECTION C-C



DETAIL A - FLANGE TRANSITION

NOTES:

- 1.) Load carrying components designated N.T.R. shall conform to the Supplemental Requirements for Notch Toughness, Zone 2.
- 2.) All girder flange plates, web plates, splice plates and bearing stiffener plates shall be AASHTO M270 Grade 50.
- 3.) See Sheet B24 for Sections D-D and E-E.

**STRUCTURAL STEEL
STRUCTURE NO. 084-0028**

DESIGNED JML
CHECKED MSW
DRAWN DJM
CHECKED MGO/MSW

DATE 03/05/09

FARNSWORTH GROUP, INC.

SHEET NO. B23 44 SHEETS	F.A.I. RTE. 55	SECTION (84-3HB-6)BR	COUNTY SANGAMON	TOTAL SHEETS 90	SHEET NO. 57
	SN 084-0028		CONTRACT NO. 72A64		
FED. ROAD DIST. NO. 6 ILLINOIS FED. AID PROJECT					