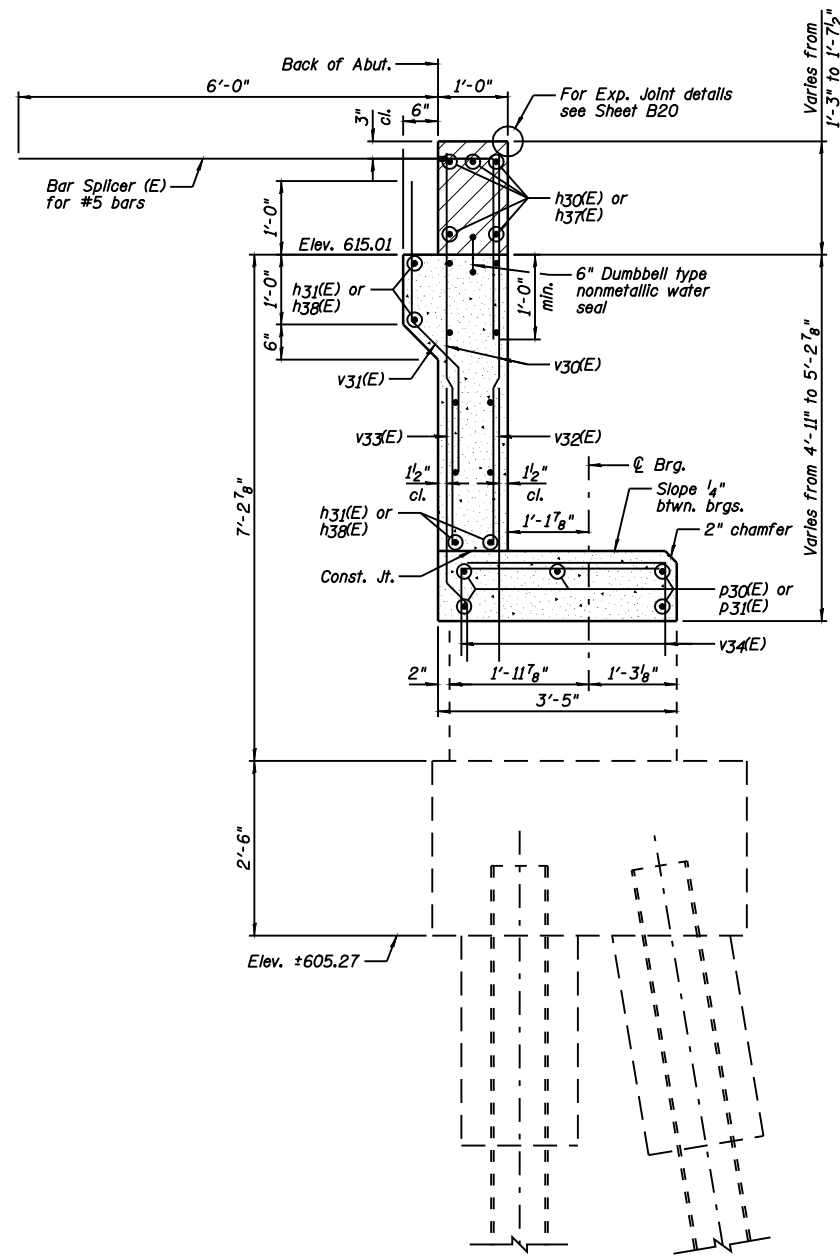
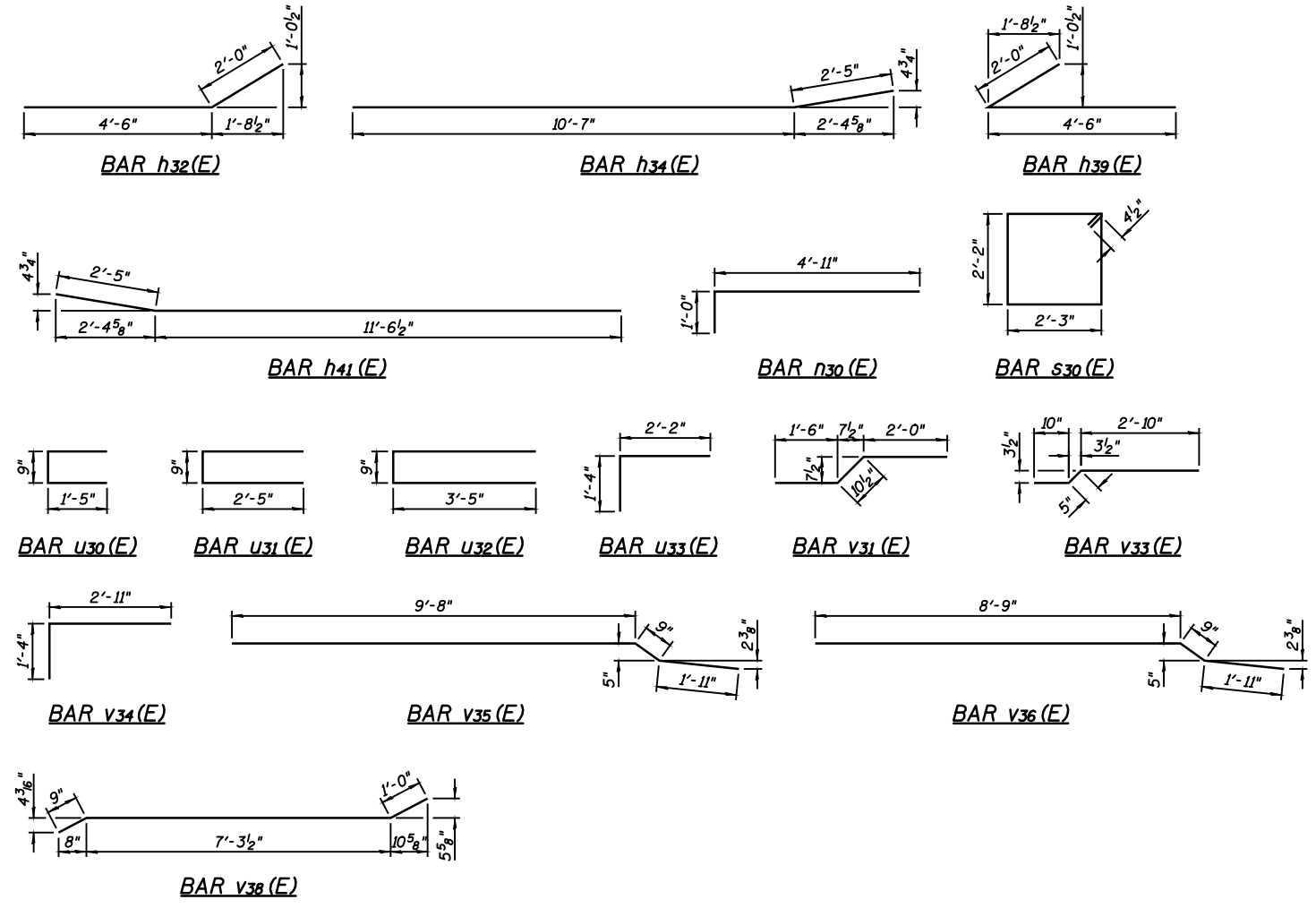


STATE OF ILLINOIS
DEPARTMENT OF TRANSPORTATION



SECTION A-A



SOUTH ABUTMENT
BILL OF MATERIAL

Bar	No.	Size	Length	Shape
h30(E)	5	#6	29'-5"	—
h31(E)	12	#5	29'-5"	—
h32(E)	12	#5	6'-6"	—
h33(E)	14	#4	12'-9"	—
h34(E)	10	#4	13'-0"	—
h35(E)	3	#5	4'-3"	—
h36(E)	3	#5	13'-8"	—
h37(E)	10	#6	18'-7"	—
h38(E)	24	#5	18'-5"	—
h39(E)	12	#5	6'-6"	—
h40(E)	14	#4	17'-4"	—
h41(E)	10	#4	14'-0"	—
h42(E)	3	#5	3'-8"	—
h43(E)	3	#5	17'-8"	—
h30(E)	7	#6	5'-11"	—
p30(E)	5	#4	31'-1"	—
p31(E)	10	#4	19'-1"	—
s30(E)	7	#4	9'-7"	□
u30(E)	4	#4	3'-7"	—
u31(E)	4	#4	5'-7"	—
u32(E)	4	#4	7'-7"	—
u33(E)	52	#4	3'-6"	—
v30(E)	132	#5	5'-0"	—
v31(E)	66	#4	4'-5"	—
v32(E)	66	#5	3'-6"	—
v33(E)	66	#5	4'-1"	—
v34(E)	138	#4	4'-3"	—
v35(E)	22	#6	12'-4"	—
v36(E)	7	#6	11'-5"	—
v37(E)	32	#6	13'-5"	—
v38(E)	2	#6	9'-1"	—
Item	Unit	Quantity		
Porous Granular Embankment, Special	Cu. Yd.	199		
Structure Excavation	Cu. Yd.	199		
Concrete Structures	Cu. Yd.	45.1		
Reinforcement Bars, Epoxy Coated	Pound	5,580		
Bar Splicers	Each	88		
Concrete Sealer	Sq. Ft.	170		
Geocomposite Wall Drain	Sq. Yd.	55		
Pipe Underdrain for Structures 4"	Foot	76		

DESIGNED	JML
CHECKED	MSW
DRAWN	DJM
CHECKED	MGO/MSW

DATE 03/05/09

FARNSWORTH GROUP, INC.

NOTES:

- See Sheet B33 for location of Section A-A.
- Hatched area to be poured after superstructure false work has been removed. Quantity included with Concrete Superstructure shown on Sheet B16.
- Drill & epoxy grout v32(E), v33(E) & v34(E) bars in appropriate drilled holes according to Section 584 of the Standard Specifications. The type of epoxy grout shall be approved by the Engineer.
- Space reinforcement in cap to miss anchor bolts.
- See Sheet B44 for Bar Splicer Details.

SOUTH ABUTMENT
STRUCTURE NO. 084-0028

SHEET NO. B35	F.A.I. RTE.	SECTION	COUNTY	TOTAL SHEETS	SHEET NO.
	55	(84-3HB-6)BR	SANGAMON	90	69
44 SHEETS	SN 084-0028		CONTRACT NO. 72A64		
FED. ROAD DIST. NO. 6 ILLINOIS FED. AID PROJECT					