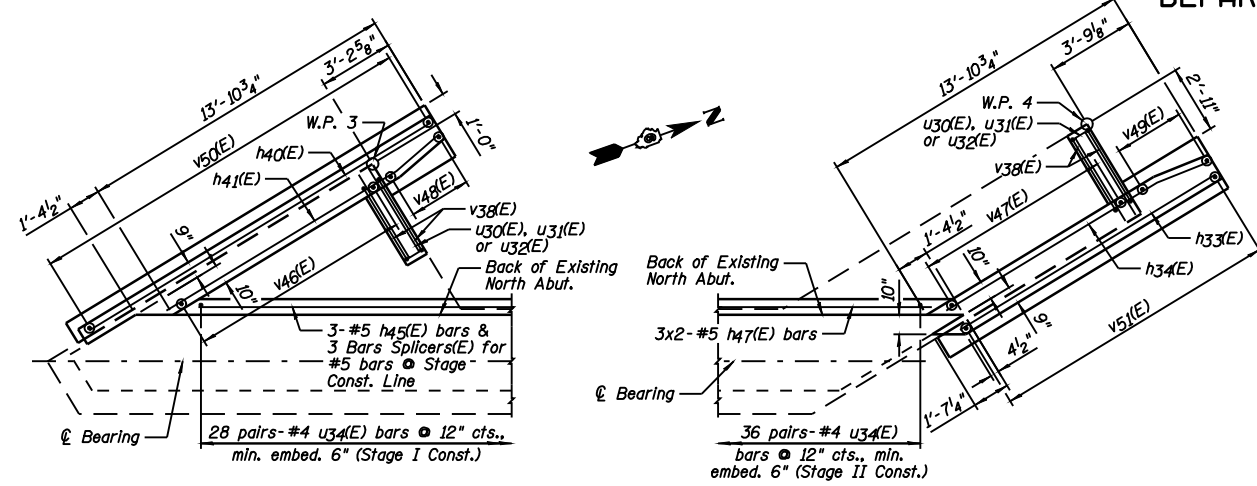
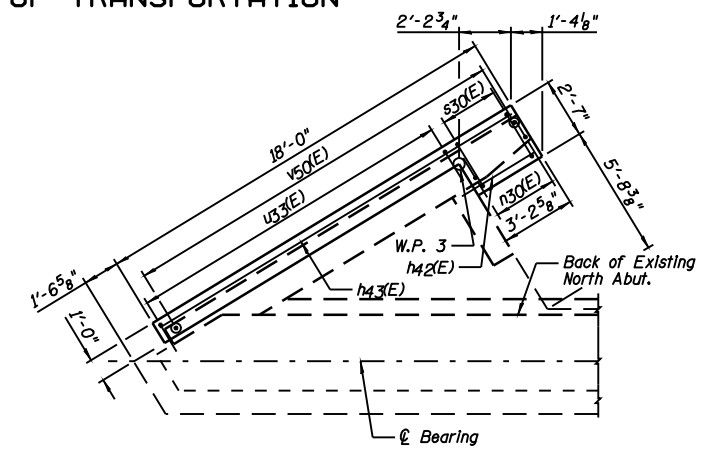


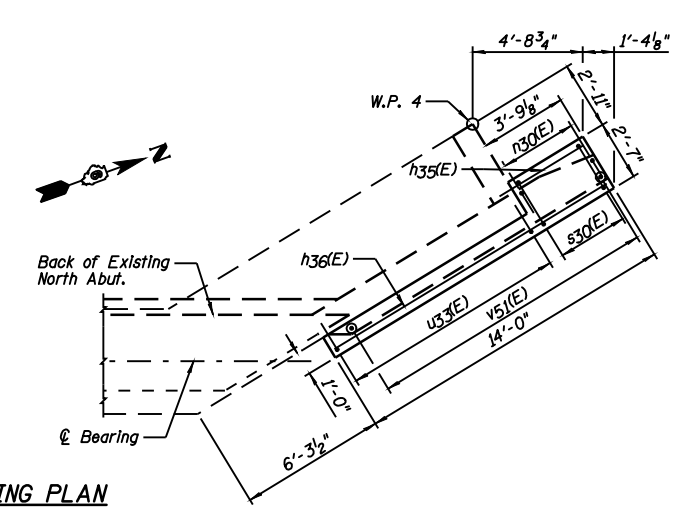
STATE OF ILLINOIS
DEPARTMENT OF TRANSPORTATION



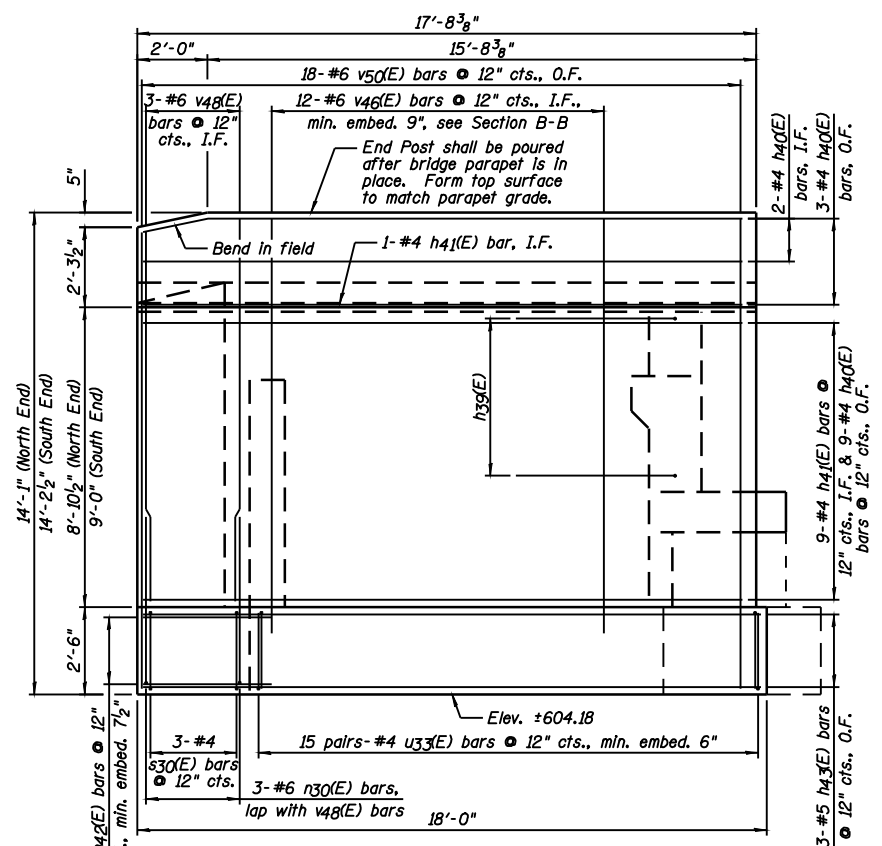
PARTIAL PLAN @ ELEV. 608.60



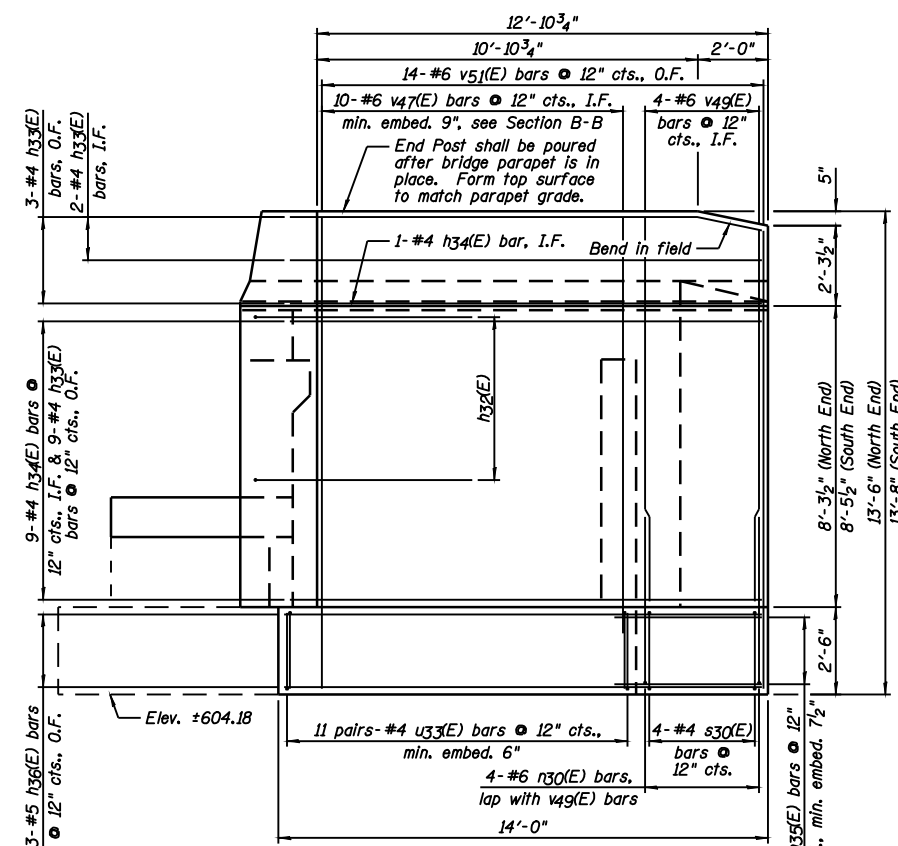
PARTIAL FOOTING PLAN



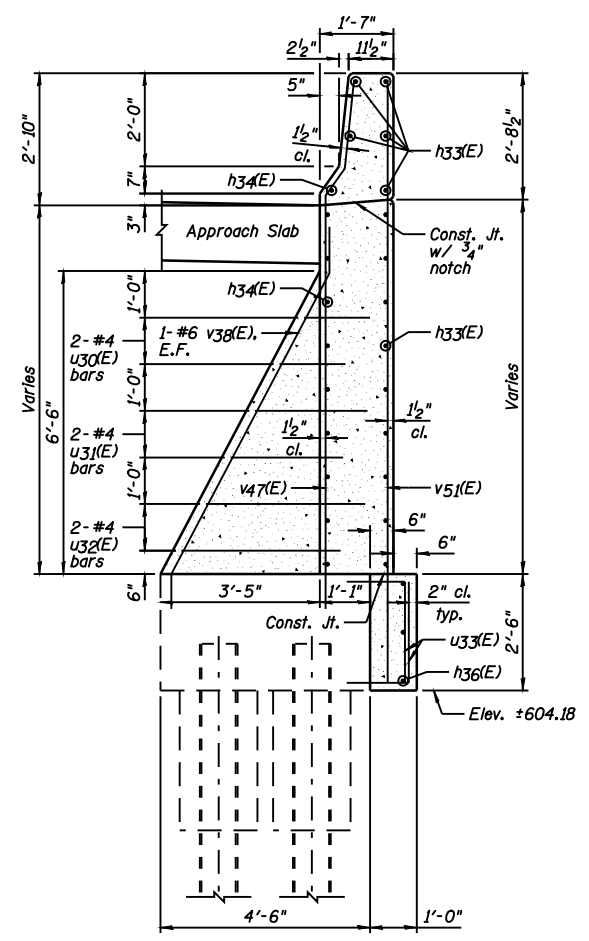
SECTION C-C
(Similar for Northwest Wingwall)



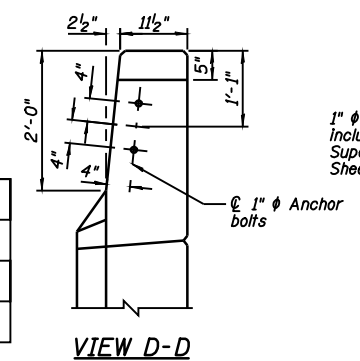
NORTHWEST WINGWALL ELEVATION



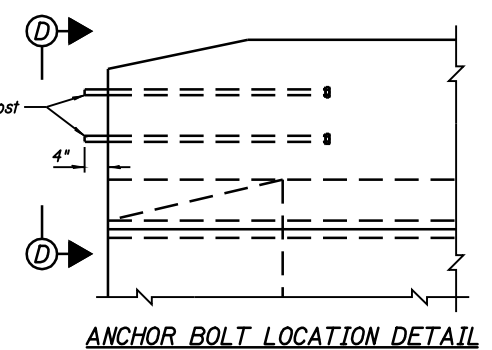
NORTHEAST WINGWALL ELEVATION



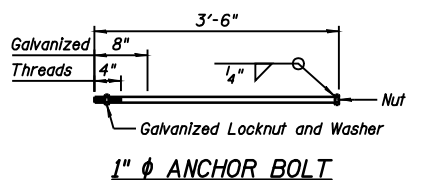
SECTION B-B
(Similar for Northwest Wingwall)



VIEW D-D



ANCHOR BOLT LOCATION DETAIL



1" ANCHOR BOLT

NOTES:

- 1.) See Sheet B37 for location of Sections B-B & C-C.
- 2.) Drill & epoxy grout h35(E), h42(E), u33(E), v35(E), v38(E), v46(E) & v47(E) bars in appropriate drilled holes according to Section 584 of the Standard Specifications. The type of epoxy grout shall be approved by the Engineer.
- 3.) See Sheet B39 for Bill of Material.
- 4.) I.F. denotes Inside Face & O.F. denotes Outside Face.

DESIGNED	JML
CHECKED	MSW
DRAWN	DJM
CHECKED	MGO/MSW
DATE	03/05/09

SHEET NO. B38	F.A.I. RTE.	SECTION	COUNTY	TOTAL SHEETS	SHEET NO.
	55	(84-3HB-6)BR	SANGAMON	90	72
44 SHEETS	SN 084-0028		CONTRACT NO. 72A64		
FED. ROAD DIST. NO. 6 ILLINOIS FED. AID PROJECT					