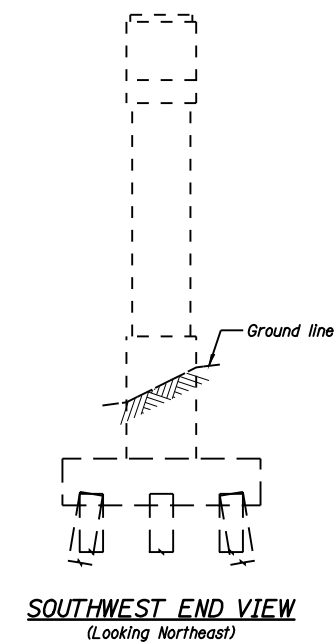
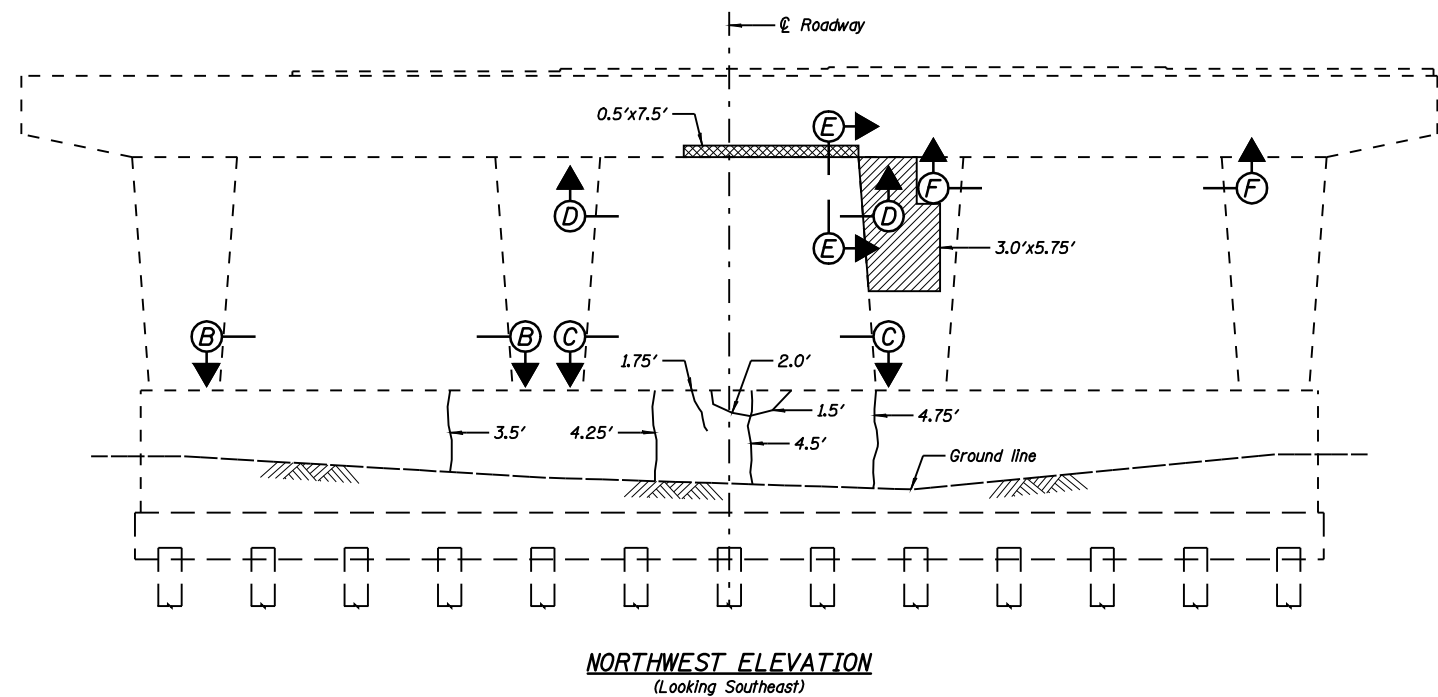
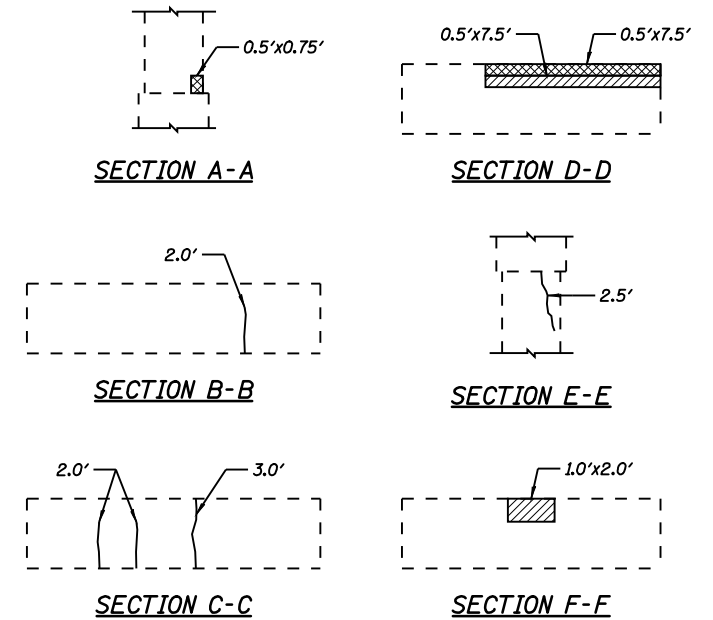
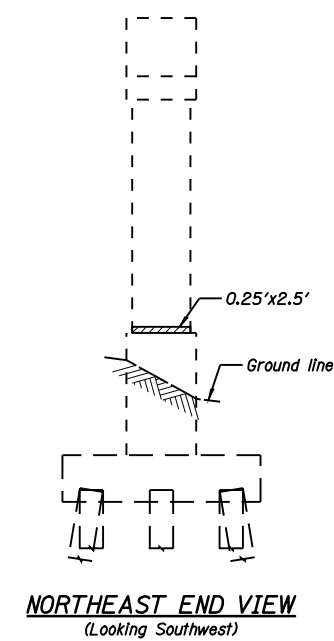
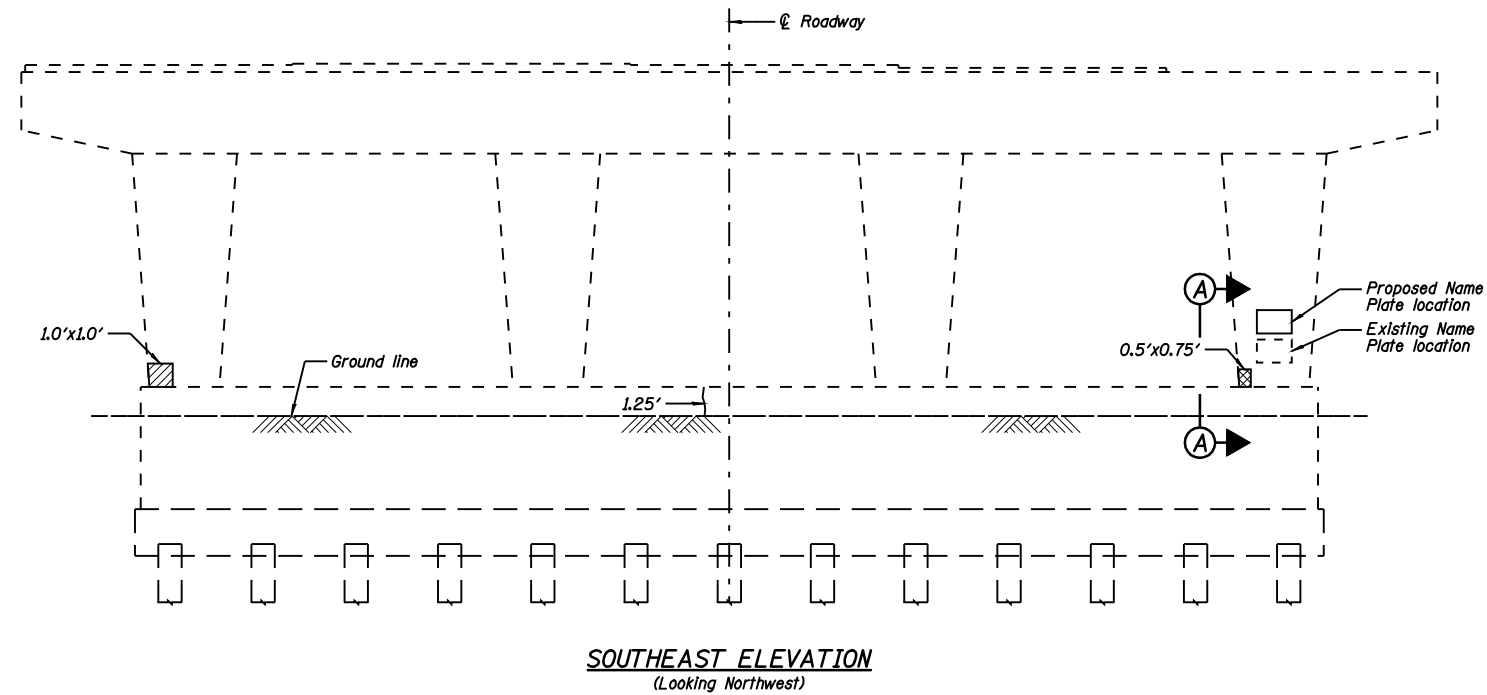


STATE OF ILLINOIS  
DEPARTMENT OF TRANSPORTATION



**BILL OF MATERIAL**

Item	Unit	Total
Epoxy Crack Injection	Foot	35
Structural Repair of Concrete (Depth Greater Than 5 Inches)	Sq. Ft.	8
Structural Repair of Concrete (Depth Equal to or Less Than 5 Inches)	Sq. Ft.	25

**LEGEND**

	Structural Repair of Concrete (Depth Greater Than 5 Inches)
	Structural Repair of Concrete (Depth Equal to or Less Than 5 Inches)
	Epoxy Crack Injection

DESIGNED <i>JML</i>
CHECKED <i>MSW</i>
DRAWN <i>DJM</i>
CHECKED <i>MGO/MSW</i>

DATE 03/05/09

**NOTE:**  
Crack widths are  $\frac{1}{8}$ " ( $\pm \frac{1}{16}$ ") unless otherwise noted.

SHEET NO. B42	F.A.I. RTE.	SECTION	COUNTY	TOTAL SHEETS	SHEET NO.
	55	(84-3HB-6)BR	SANGAMON	90	76
44 SHEETS	SN 084-0028		CONTRACT NO. 72A64		
FED. ROAD DIST. NO. 6 ILLINOIS FED. AID PROJECT					