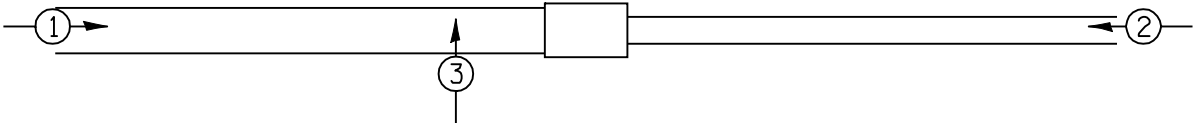


LEGEND

- WORK AREA
- SIGN
- TYPE III BARRICADE
- DRUM WITH STEADY BURNING LIGHT
- TRAFFIC SIGNAL
- TYPE C BIDIRECTIONAL REFLECTOR
- TEMPORARY CONCRETE BARRIER (STD 704001)
- IMPACT ATTENUATOR
- STEADY BURNING LIGHTS AND DOUBLE VERTICAL PANELS
- DOUBLE VERTICAL PANEL

NOTE: TC&P, STD 701321 SHALL BE FOLLOWED. DETAILS ON THIS SHEET SHOWS EXACT LOCATION OF THOSE ITEMS AND MODIFIES THE STANDARD DETAILS TO FIT JOB CONDITIONS

TEMPORARY SIGNAL PHASE DIAGRAM



FILE NAME = e:\pwork\PWIDOT\LAUGHLINRL\0134498\planstagel.dgn	USER NAME = laughlinr1	DESIGNED -	REVISED -	STATE OF ILLINOIS DEPARTMENT OF TRANSPORTATION	TRAFFIC CONTROL DETAILS (STAGE 1) AT WOLF LAKE				F.A.P. RTE.	SECTION	COUNTY	TOTAL SHEETS	SHEET NO.
	PLOT SCALE = 40.0000' / IN.	DRAWN -	REVISED -						614	144(B-1,B-2)	CASS, MASON	351	31
	PLOT DATE = Mar-31-2009 07:49:43AM	CHECKED -	REVISED -		CONTRACT NO. 72A76				ILLINOIS FED. AID PROJECT				
		DATE -	REVISED -		SCALE:	SHEET NO.	OF	SHEETS	STA. 863+00 TO STA. 869+00				