

- STAGE 2 CONSTRUCTION @ WOLF LAKE:
1. RELOCATE TEMPORARY CONCRETE BARRIER AND OTHER TRAFFIC CONTROL ITEMS IN ACCORDANCE WITH STANDARD 701321 AND STAGE 2 TRAFFIC CONTROL DETAILS

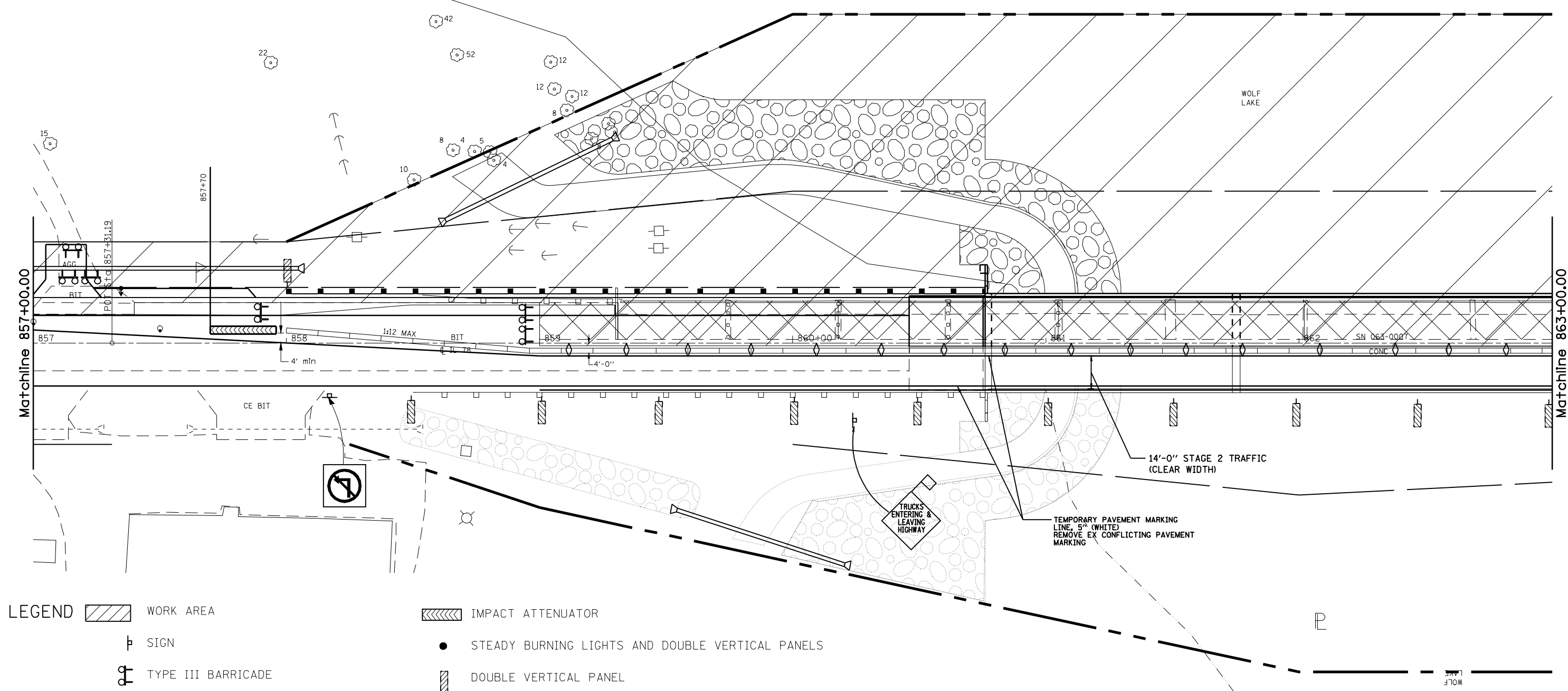
2. SHIFT TRAFFIC TO RIGHT (SOUTHBOUND) LANE

3. REMOVE EXISTING GUARDRAIL, BRIDGE RAILS, DECK BEAMS, TOP PORTION OF ABUTMENTS AND PIERS, AND PAVEMENT (AS NECESSARY) LEFT OF CENTERLINE

4. INSTALL STAGE II ROADWAY AND STRUCTURE ITEMS, LEFT OF CENTERLINE.

5. INSTALL STEEL PLATE BEAM GUARDRAIL AND TERMINAL SECTIONS, LEFT OF CENTERLINE

6. REMOVE TRAFFIC CONTROL ITEM ASSOCIATED WITH STANDARD 701321 AND RESTORE TWO-LANE, TWO-WAY TRAFFIC
- 



LEGEND

WORK AREA

SIGN

TYPE III BARRICADE

DRUM WITH STEADY BURNING LIGHT

TRAFFIC SIGNAL

TYPE C BIDIRECTIONAL REFLECTOR

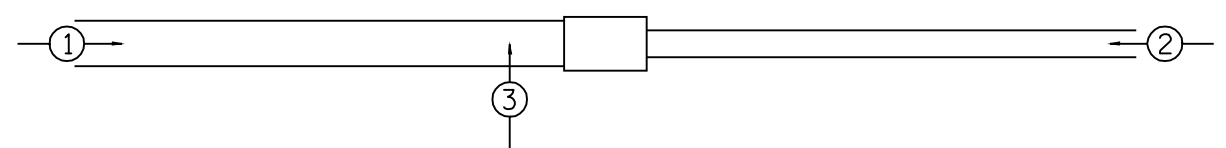
TEMPORARY CONCRETE BARRIER (STD 704001)

IMPACT ATTENUATOR

STEADY BURNING LIGHTS AND DOUBLE VERTICAL PANELS

DOUBLE VERTICAL PANEL

TEMPORARY SIGNAL PHASE DIAGRAM



NOTE: TC&P, STD 701321 SHALL BE FOLLOWED. DETAILS ON THIS SHEET SHOWS EXACT LOCATION OF THOSE ITEMS AND MODIFIES THE STANDARD DETAILS TO FIT JOB CONDITIONS

FILE NAME = c:\pwork\PWIDOT\LAUGHLINRL\d0134498\planstage2.dgn	USER NAME = laughlinr1	DESIGNED -	REVISED -	STATE OF ILLINOIS DEPARTMENT OF TRANSPORTATION	TRAFFIC CONTROL DETAILS (STAGE 2) AT WOLF LAKE				F.A.P. RTE.	SECTION	COUNTY	TOTAL SHEETS	SHEET NO.
	DRAWN -	CHECKED -	REVISED -						614	144(B-1,B-2)	CASS, MASON	351	34
	PLOT SCALE = 40.0000' / IN.	CHECKED -	REVISED -						CONTRACT NO. 72A76				
	PLOT DATE = Mar-31-2009 07:49:52AM	DATE -	REVISED -		SCALE:	SHEET NO.	OF	SHEETS	STA. 857+00 TO STA. 863+00	FED. ROAD DIST. NO.	ILLINOIS FED. AID PROJECT		