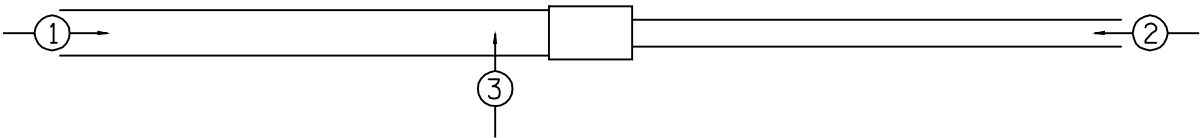


- LEGEND
- WORK AREA
 - SIGN
 - TYPE III BARRICADE
 - DRUM WITH STEADY BURNING LIGHT
 - TRAFFIC SIGNAL
 - TYPE C BIDIRECTIONAL REFLECTOR
 - TEMPORARY CONCRETE BARRIER (STD 704001)
 - IMPACT ATTENUATOR
 - STEADY BURNING LIGHTS AND DOUBLE VERTICAL PANELS
 - DOUBLE VERTICAL PANEL

NOTE: TC&P, STD 701321 SHALL BE FOLLOWED. DETAILS ON THIS SHEET SHOWS EXACT LOCATION OF THOSE ITEMS AND MODIFIES THE STANDARD DETAILS TO FIT JOB CONDITIONS

TEMPORARY SIGNAL PHASE DIAGRAM



FILE NAME = e:\pwork\PWIDOT\LAUGHLINRL\0134498\planstage2.dgn	USER NAME = laughlinr1	DESIGNED -	REVISED -	STATE OF ILLINOIS DEPARTMENT OF TRANSPORTATION	TRAFFIC CONTROL DETAILS (STAGE 2) AT WOLF LAKE				F.A.P. RTE.	SECTION	COUNTY	TOTAL SHEETS	SHEET NO.
	PLOT SCALE = 40.0000' / IN.	DRAWN -	REVISED -						614	144(B-1,B-2)	CASS, MASON	351	35
	PLOT DATE = Mar-31-2009 07:49:56AM	CHECKED -	REVISED -		CONTRACT NO. 72A76								
		DATE -	REVISED -		SCALE:	SHEET NO.	OF	SHEETS	STA. 863+00 TO STA. 869+00	FED. ROAD DIST. NO.	ILLINOIS	FED. AID PROJECT	