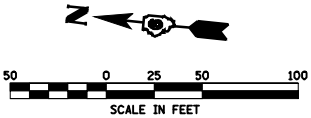


DEVICE ASSOCIATES  
CORP OF NY  
PARCEL NO. 6246120 A & B

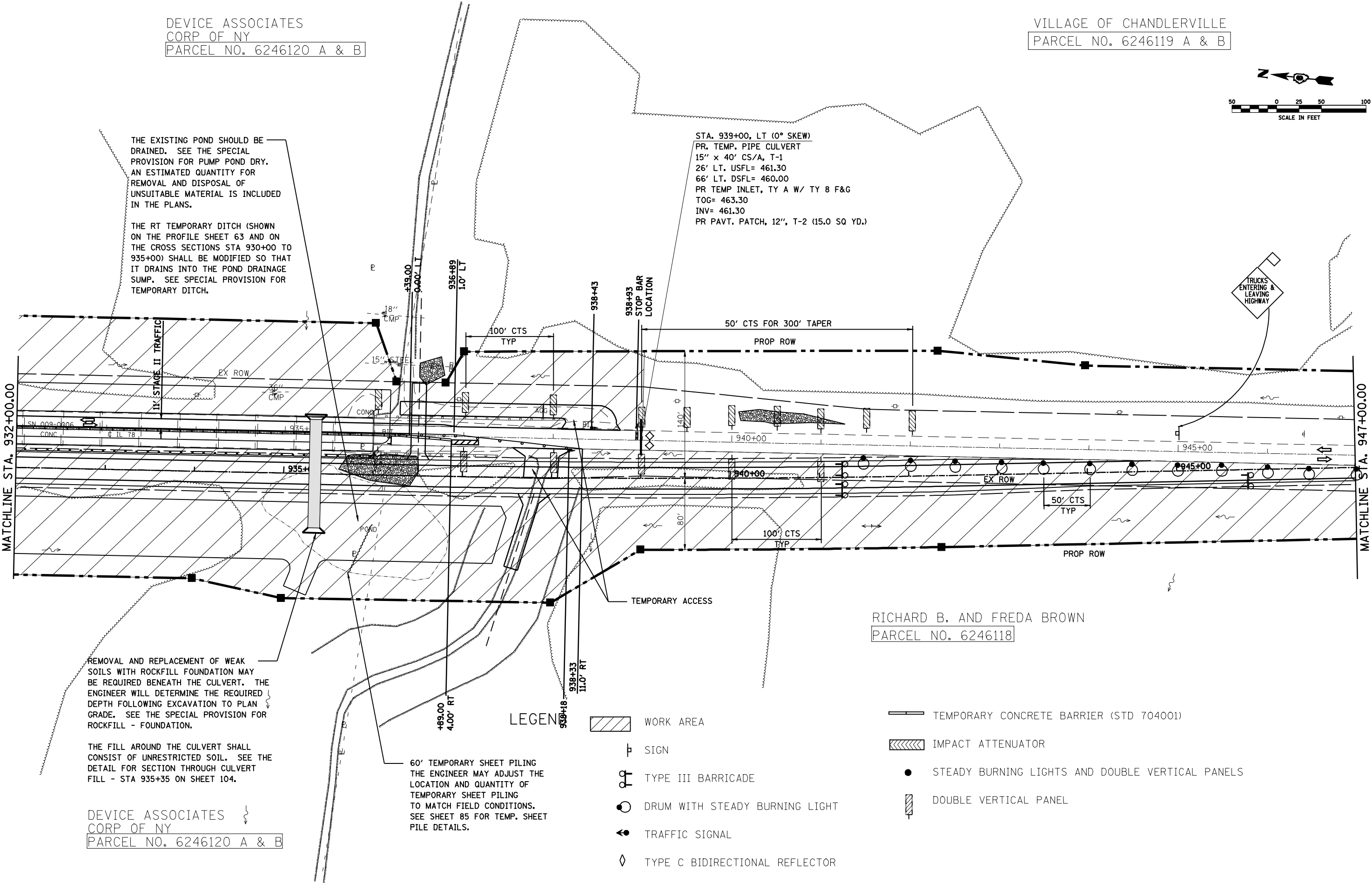
VILLAGE OF CHANDLERVILLE  
PARCEL NO. 6246119 A & B



THE EXISTING POND SHOULD BE DRAINED. SEE THE SPECIAL PROVISION FOR PUMP POND DRY. AN ESTIMATED QUANTITY FOR REMOVAL AND DISPOSAL OF UNSUITABLE MATERIAL IS INCLUDED IN THE PLANS.

THE RT TEMPORARY DITCH (SHOWN ON THE PROFILE SHEET 63 AND ON THE CROSS SECTIONS STA 930+00 TO 935+00) SHALL BE MODIFIED SO THAT IT DRAINS INTO THE POND DRAINAGE SUMP. SEE SPECIAL PROVISION FOR TEMPORARY DITCH.

STA. 939+00, LT (0° SKEW)  
PR. TEMP. PIPE CULVERT  
15' x 40' CS/A, T-1  
26' LT. USFL= 461.30  
66' LT. DSFL= 460.00  
PR TEMP INLET, TY A W/ TY 8 F&G  
TOG= 463.30  
INV= 461.30  
PR PAVT. PATCH, 12", T-2 (15.0 SQ YD.)



REMOVAL AND REPLACEMENT OF WEAK SOILS WITH ROCKFILL FOUNDATION MAY BE REQUIRED BENEATH THE CULVERT. THE ENGINEER WILL DETERMINE THE REQUIRED DEPTH FOLLOWING EXCAVATION TO PLAN GRADE. SEE THE SPECIAL PROVISION FOR ROCKFILL - FOUNDATION.

THE FILL AROUND THE CULVERT SHALL CONSIST OF UNRESTRICTED SOIL. SEE THE DETAIL FOR SECTION THROUGH CULVERT FILL - STA 935+35 ON SHEET 104.

DEVICE ASSOCIATES  
CORP OF NY  
PARCEL NO. 6246120 A & B

60' TEMPORARY SHEET PILING  
THE ENGINEER MAY ADJUST THE LOCATION AND QUANTITY OF TEMPORARY SHEET PILING TO MATCH FIELD CONDITIONS. SEE SHEET 85 FOR TEMP. SHEET PILE DETAILS.

RICHARD B. AND FRED A BROWN  
PARCEL NO. 6246118

LEGEND



WORK AREA



SIGN



TYPE III BARRICADE



DRUM WITH STEADY BURNING LIGHT



TRAFFIC SIGNAL



TYPE C BIDIRECTIONAL REFLECTOR



TEMPORARY CONCRETE BARRIER (STD 704001)



IMPACT ATTENUATOR



STEADY BURNING LIGHTS AND DOUBLE VERTICAL PANELS



DOUBLE VERTICAL PANEL

FILE NAME = e:\pwork\PWIDOT\LAUGHLINRL\0134498\pansstage1&2south.dgn	USER NAME = laughlinr1	DESIGNED -	REVISED -	STATE OF ILLINOIS DEPARTMENT OF TRANSPORTATION	TRAFFIC CONTROL DETAILS (STAGE 1 & 2 SOUTH)	SCALE:	SHEET NO. OF SHEETS	STA. 932+00 TO STA. 947+00	F.A.P. RTE.	SECTION	COUNTY	TOTAL SHEETS	SHEET NO.
		DRAWN -	REVISED -						614	144(B-1B-2)	CASS, MASON	351	42
		CHECKED -	REVISED -						CONTRACT NO. 72A76				
		DATE -	REVISED -						FED. ROAD DIST. NO. ILLINOIS FED. AID PROJECT				