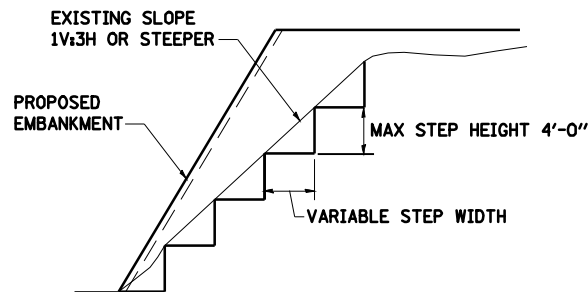


- LEGEND**
- ① PROPOSED HMA SURFACE COURSE
  - ② PROPOSED LEVELING BINDER COURSE
  - ③ PROPOSED HMA SURFACE REMOVAL - BUTT JOINT

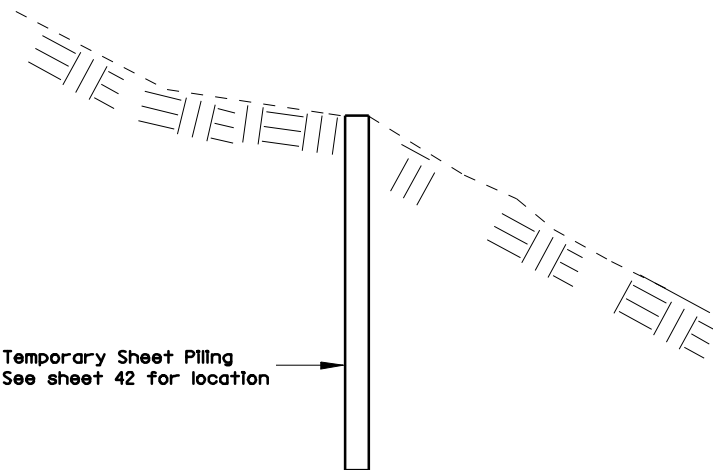
**MAINLINE BUTT JOINT**



EXISTING 1 1/2H OR STEEPER SLOPES SHALL BE STEPPED PRIOR TO PLACING NEW EMBANKMENT.

**TYPICAL FILLSLOPE STEPPING DETAIL**

NOTE: THIS EXCAVATION REQUIRED FOR BENCHING THE PROPOSED EMBANKMENT INTO THE EXISTING SLOPE WILL NOT BE MEASURED FOR PAYMENT BUT SHALL BE CONSIDERED AS A REQUIREMENT AND THE COST INCLUDED IN THE CONTRACT UNIT BID PRICE PER CUBIC YARD FOR "EARTH EXCAVATION" OF THE MATERIAL MEASURED FOR PAYMENT IN ACCORDANCE WITH SECTION 202 OF THE STANDARD SPECIFICATIONS.



**TEMPORARY SHEET PILING DETAILS**

Temporary Sheet Piling  
S = 29 in /ft.<sup>3</sup>  
Minimum Embedment 36'-0"  
Est. Horiz. Length 61'-0"  
Est. Length 36'-0"