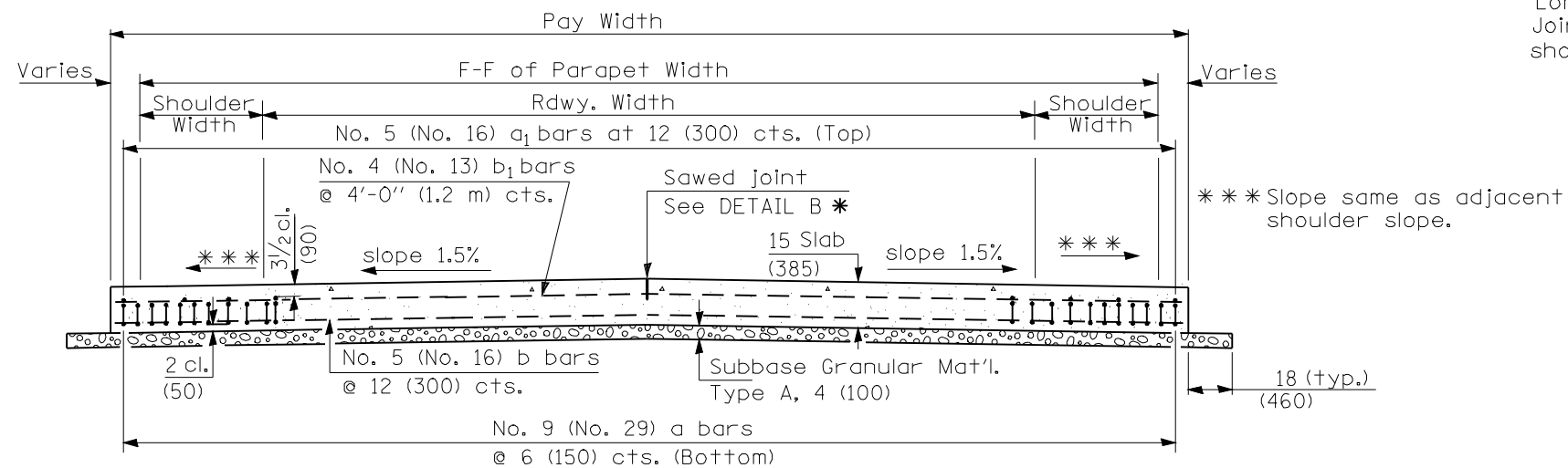


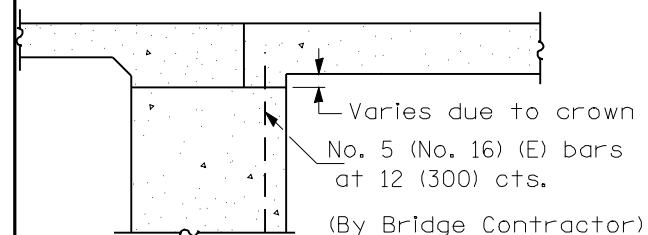
SECTION D-D

(See Plan for Dimensions not shown)



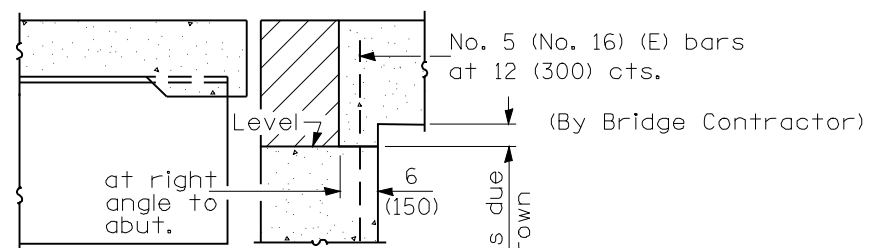
SECTION D-D AT N. ABUTMENT WOLF LAKE

(See Plan for Dimensions not shown)



SECTION E-E

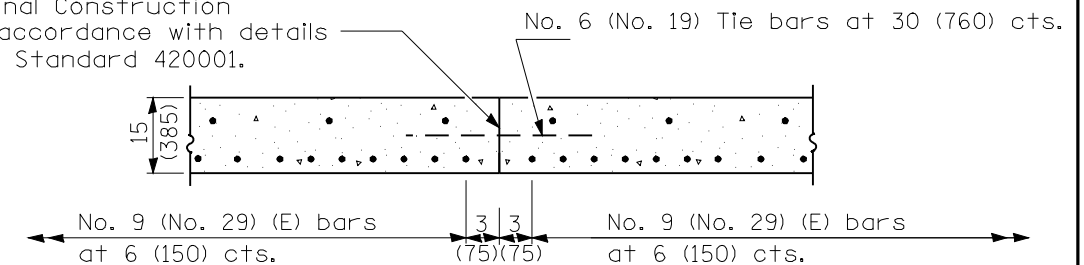
(Integral Abutments)



SECTION E-E

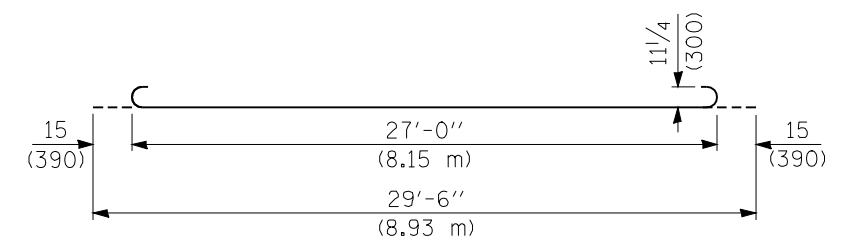
(Jointed Abutments)

Longitudinal Construction Joint in accordance with details shown on Standard 420001.

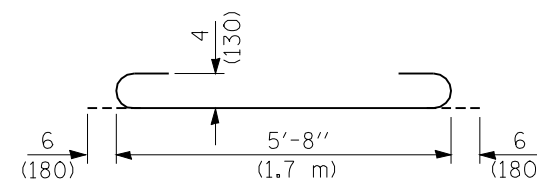


LONGITUDINAL STAGE CONSTRUCTION JOINT

As approved by the Engineer, the Contractor may elect to reduce the widths of pour by use of the Optional Longitudinal Construction Joint shown. Joints shall be located at the edge of a traffic lane.



BAR a



BAR a2

DESIGN STRESSES

$f_y = 60,000$ p.s.i. (400 MPa)
 $f'_c = 3,500$ p.s.i. (24 MPa)
 $n = 8.5$

FILE NAME =	USER NAME = laughlinr1	DESIGNED -	REVISED -	STATE OF ILLINOIS DEPARTMENT OF TRANSPORTATION	BRIDGE APPROACH PAVEMENT DETAILS				F.A.P. RTE.	SECTION	COUNTY	TOTAL SHEETS	SHEET NO.
e:\pwwork\PWIDOT\LAUGHLINRL\d0134498\B	BridgeApproachPvmDetails.dgn	DRAWN -	REVISED -						614	144(B-1, B-2)	CASS, MASON	351	102
	PLOT SCALE = 0.24,384 ms / IN.	CHECKED -	REVISED -		CONTRACT NO. 72A76								
	PLOT DATE = Mar-31-2009 07:57:07AM	DATE -	REVISED -		SCALE:	SHEET NO. 3	OF 4 SHEETS	STA.	TO STA.	FED. ROAD DIST. NO.	ILLINOIS	FED. AID PROJECT	