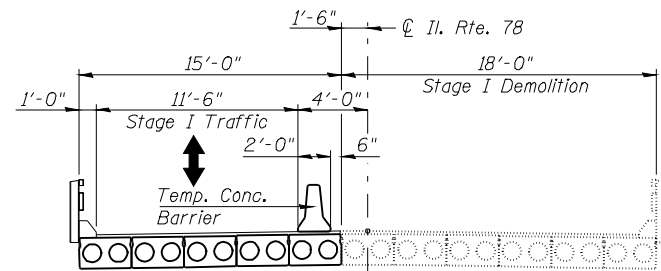
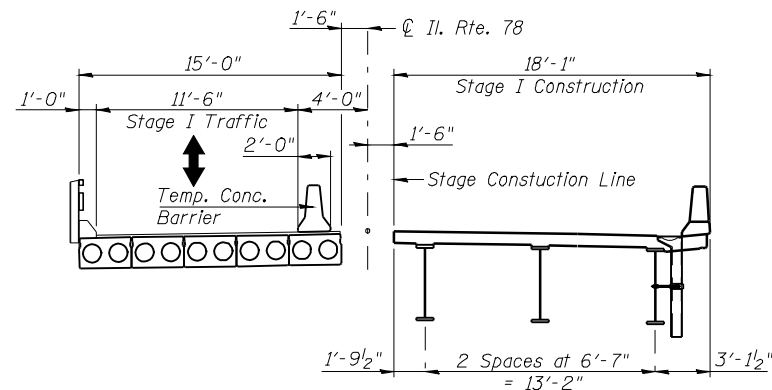


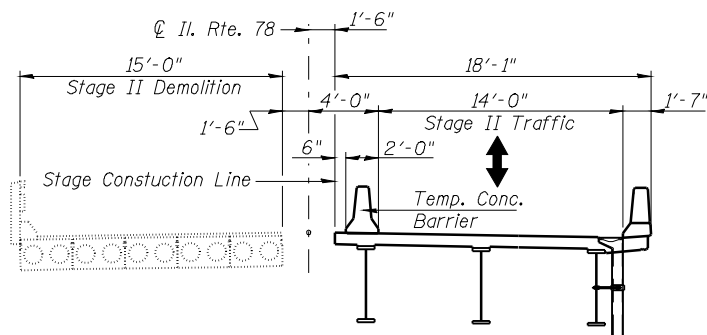
LAYOUT
TEH
10/25/08
DRAWN
Rcd
12/15/08
REVIEWED
TEH
12/19/08
MAY 31 2009 07:57:25 AM
C:\m\work\PM100\LA63\LA63-03-4498-063-0500 Master Sheet File.dgn



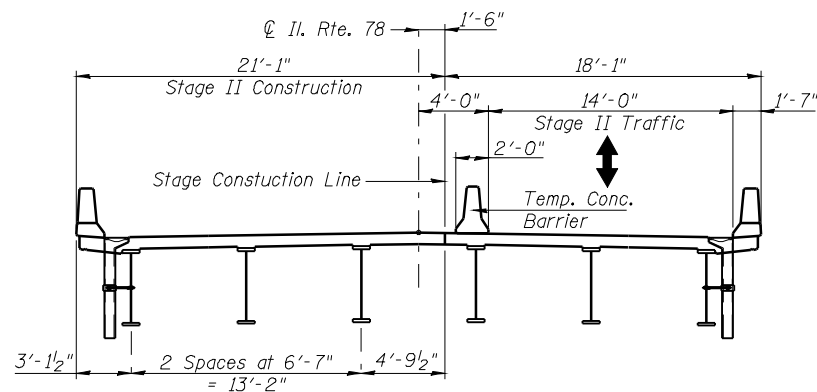
STAGE I DEMOLITION
(Looking South)



STAGE I CONSTRUCTION
(Looking South)

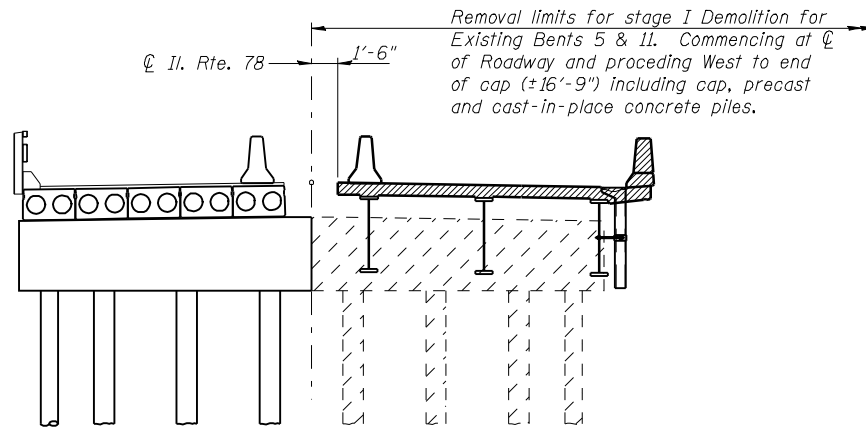


STAGE II DEMOLITION
(Looking South)

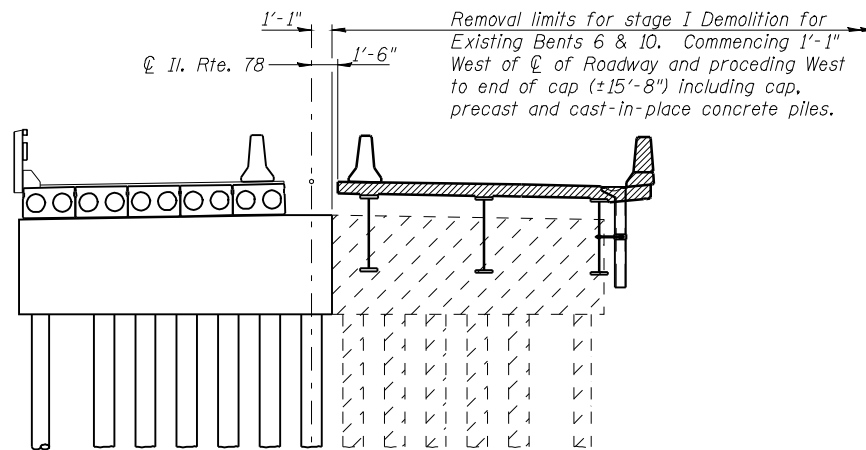


STAGE II CONSTRUCTION
(Looking South)

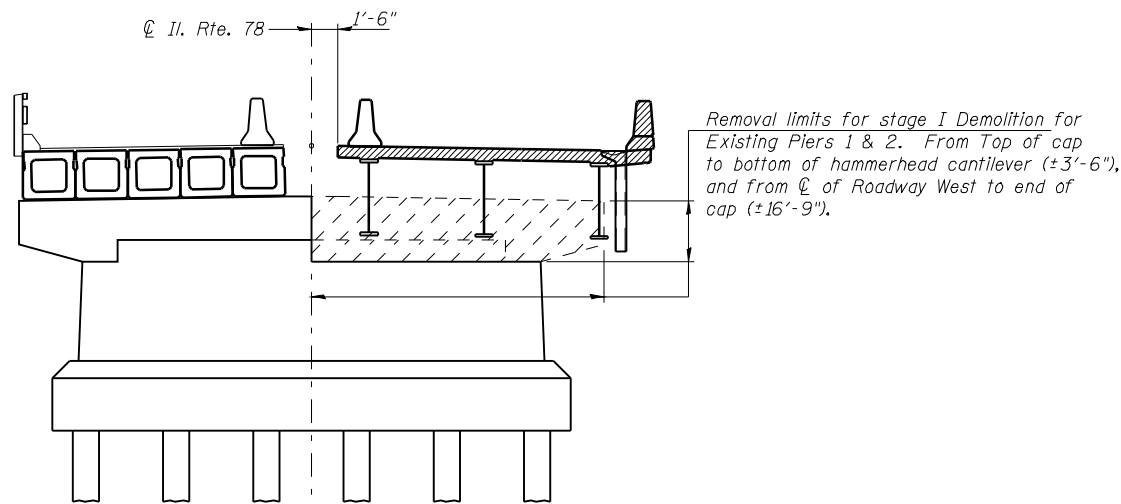
STATE OF ILLINOIS
DEPARTMENT OF TRANSPORTATION



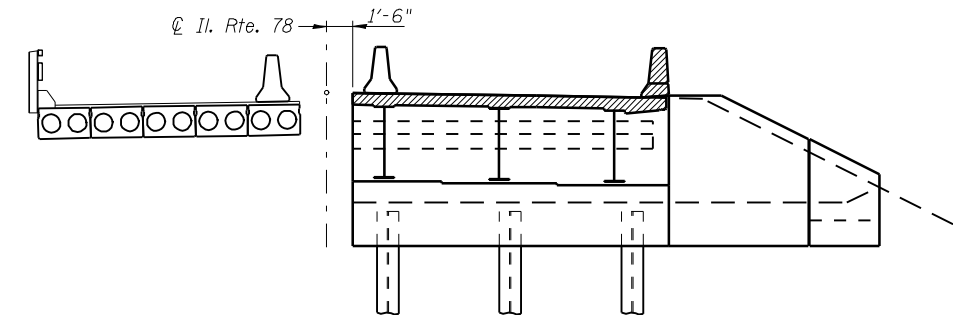
STAGE I DEMOLITION AT EXISTING BENTS 5 & 11
(Looking South)



STAGE I DEMOLITION AT EXISTING BENTS 6 & 10
(Looking South)



STAGE I DEMOLITION AT EXISTING PIERS 1 & 2
(Looking South)



STAGE CONSTRUCTION AT PROPOSED ABUTMENTS
(Looking South)

See Sheet 3 of 29 for existing bent and pier locations.

STAGE CONSTRUCTION DETAILS
F.A.P. 614 (IL 78) OVER WOLF LAKE
(PUBLIC BODY OF WATER)
SECTION 144 (B-2)
MASON COUNTY
STA. 862+41.25
STRUCTURE NUMBER 063-0500

PROFESSIONAL DESIGN FIRM LICENSE #184-001084

© Copyright Hanson Professional Services Inc. \$MS_YEAR\$



JOB NO.

07S2026

DATE

03/27/09

SHEET NO. 4

29 SHEETS

F.A. RTE.	SECTION	COUNTY	TOTAL SHEETS	SHEET NO.
614	144(B-1, B-2)	Mason	351	111
CONTRACT NO. 72A76				
FED. ROAD DIST. NO. ILLINOIS FED. AID PROJECT				