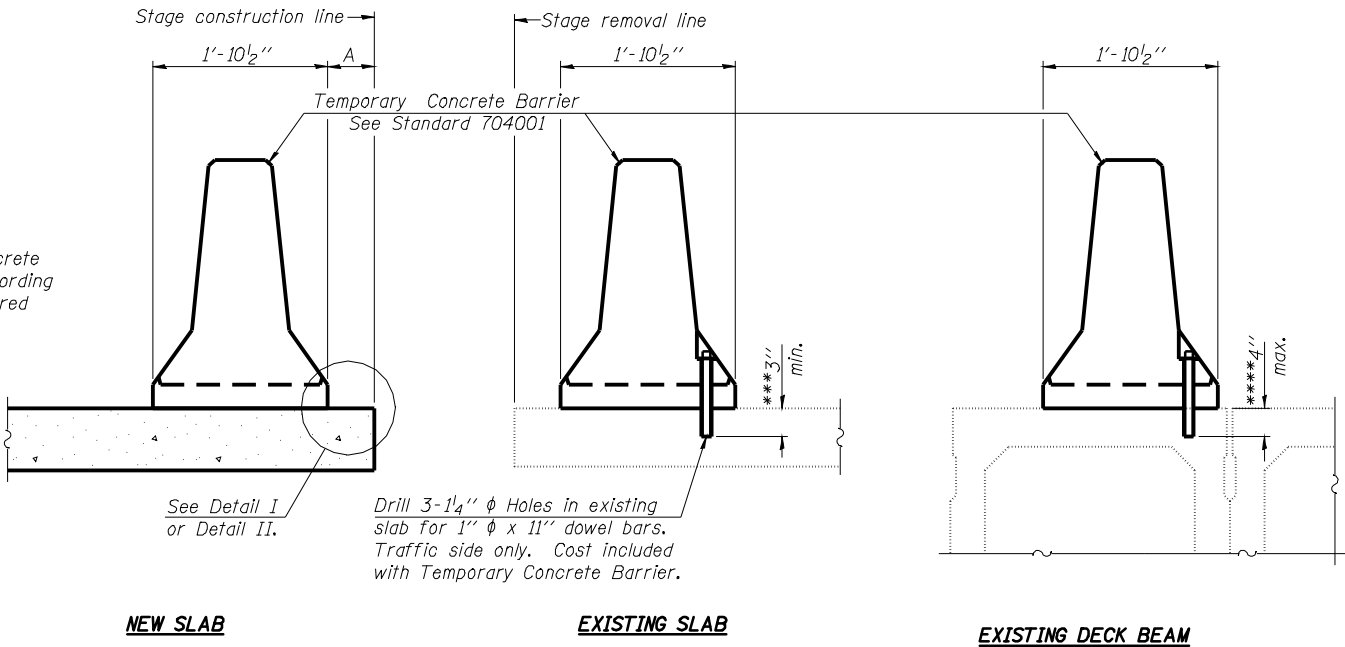


STATE OF ILLINOIS
DEPARTMENT OF TRANSPORTATION

When "A" is 3'-6" or less, the temporary concrete barrier shall be anchored to the new slab according to Detail I or Detail II. No anchorage is required when "A" is greater than 3'-6".



NOTES

Detail I - With Bar Splicer or Couplers:
Connect one (1) 1"x7"x10" steel \bar{P} to the top layer of couplers with 2-5/8" ϕ bolts screwed to coupler at approximate \bar{C} of each barrier panel.

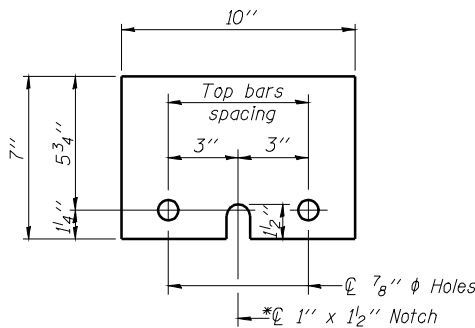
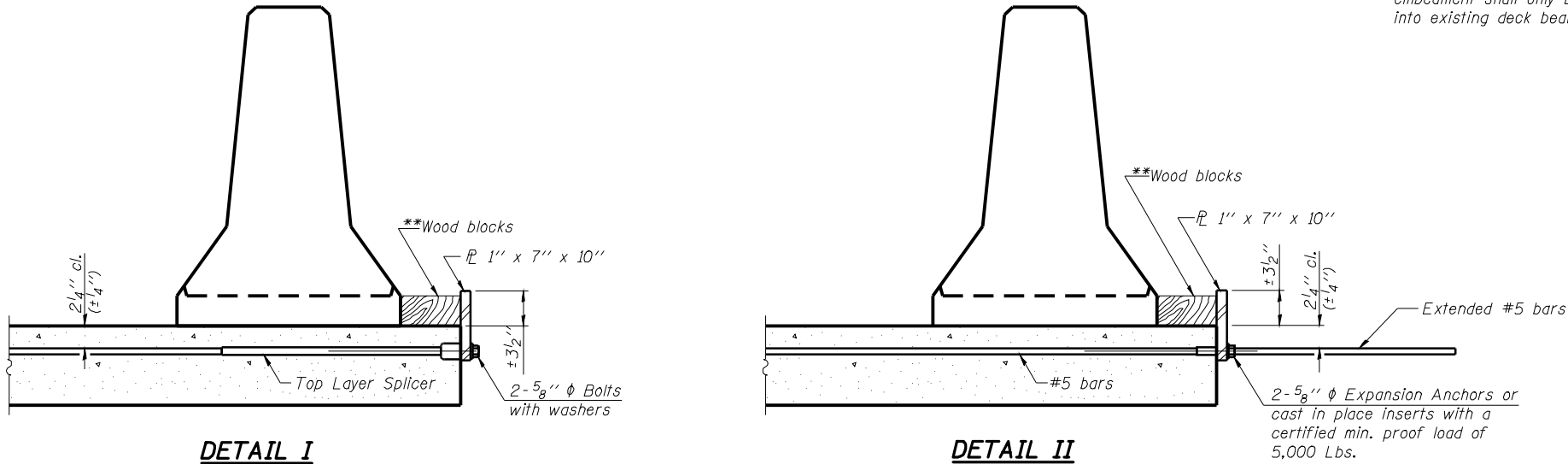
Detail II - With Extended Reinforcement Bars:
Connect one (1) 1"x7"x10" steel \bar{P} to the concrete slab or concrete wearing surface with 2-5/8" ϕ Expansion Anchors or cast in place inserts spaced between the top layer of reinforcement at approximate \bar{C} of each barrier panel.

Cost of anchorage is included with Temporary Concrete Barrier. The 1" x 7" x 10" plate shall not be removed until stage II construction forms and all reinforcement bars are in place and the concrete is ready to be placed.

SECTIONS THRU SLAB OR DECK BEAM

*** Dimension shown is minimum required embedment into concrete.
If hot-mix asphalt wearing surface is present, minimum embedment shall be in addition to wearing surface depth.

**** If existing deck beam is to remain in place after stage construction, embedment shall only be into wearing surface and not into existing deck beam concrete.



* Required only with Detail II

**TEMPORARY CONCRETE BARRIER
FOR STAGE CONSTRUCTION
F.A.P. 614 (IL 78) OVER WOLF LAKE
(PUBLIC BODY OF WATER)
SECTION 144 (B-2)
MASON COUNTY
STA. 862+41.25
STRUCTURE NUMBER 063-0500**

**Wood blocks may be omitted when required to provide minimum stage traffic lane width. When the wood blocks are omitted, the concrete barrier shall be in direct contact with the steel retainer plate.

PROFESSIONAL DESIGN FIRM LICENSE #184-001084

© Copyright Hanson Professional Services Inc. \$MS_YEAR\$

HANSON

Hanson Professional Services Inc.

JOB NO. 07S2026	SHEET NO. 5
DATE 03/27/09	29 SHEETS

F.A. RTE. 614	SECTION 144(B-1, B-2)	COUNTY Mason	TOTAL SHEETS 351	SHEET NO. 112
FED. ROAD DIST. NO.			CONTRACT NO. 72A76	
ILLINOIS			FED. AID PROJECT	

LAYOUT	MMW	01/10/09
DRAWN	Red	01/13/09
REVIEWED	TEH	01/15/09

Mon: 3/1/2009 07:51:27 AM
C:\m_worx\p1007\144B\HVR\03144B-0500 Master Sheet File.dgn