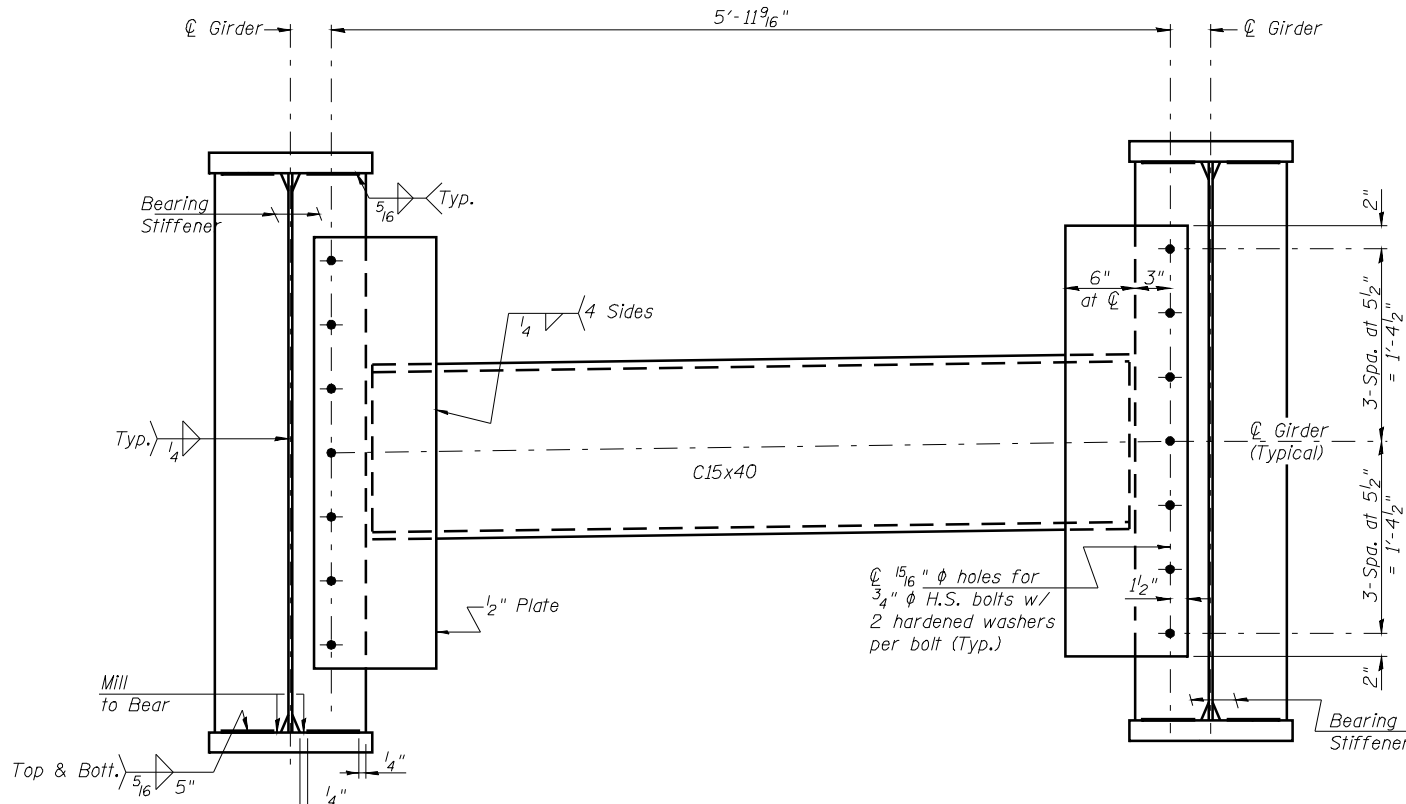
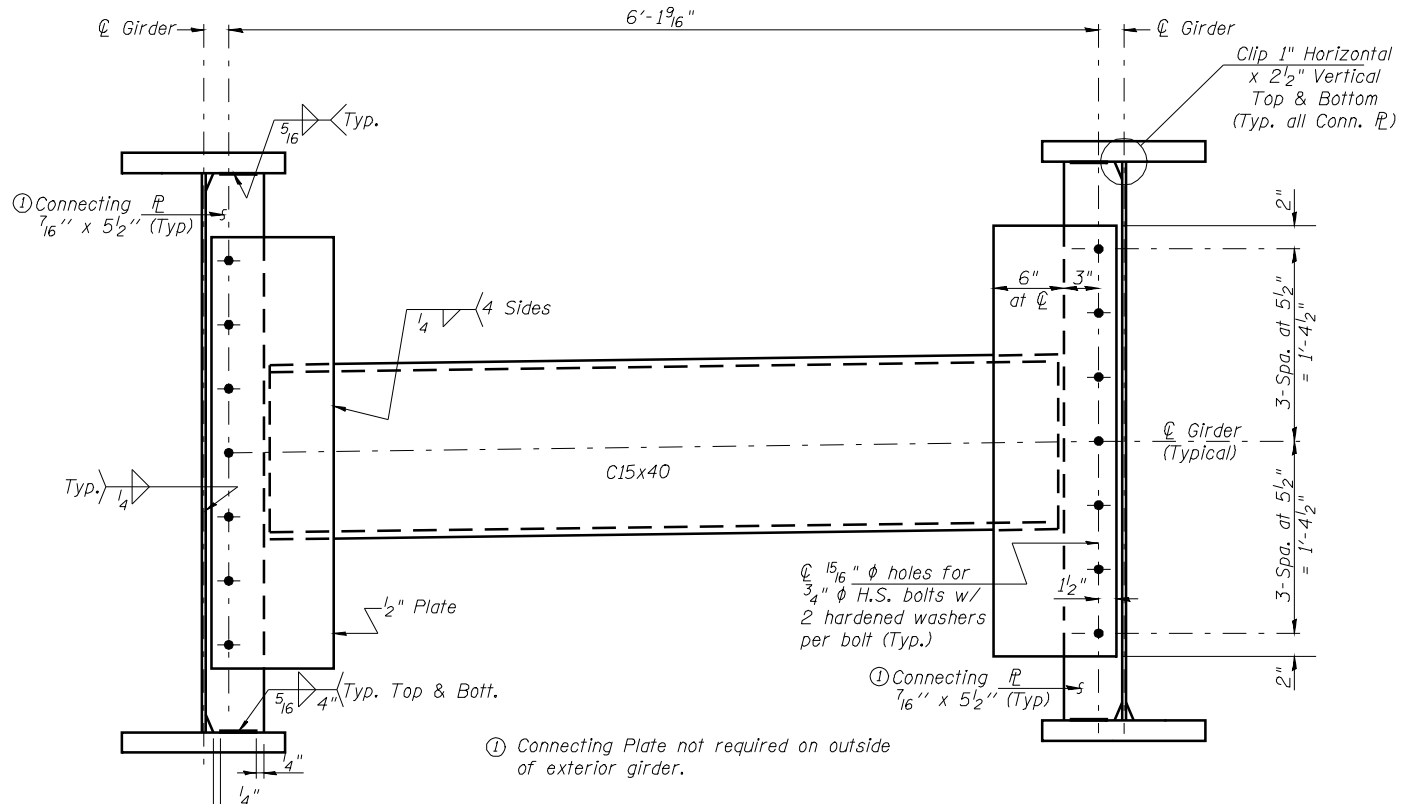


STATE OF ILLINOIS  
DEPARTMENT OF TRANSPORTATION



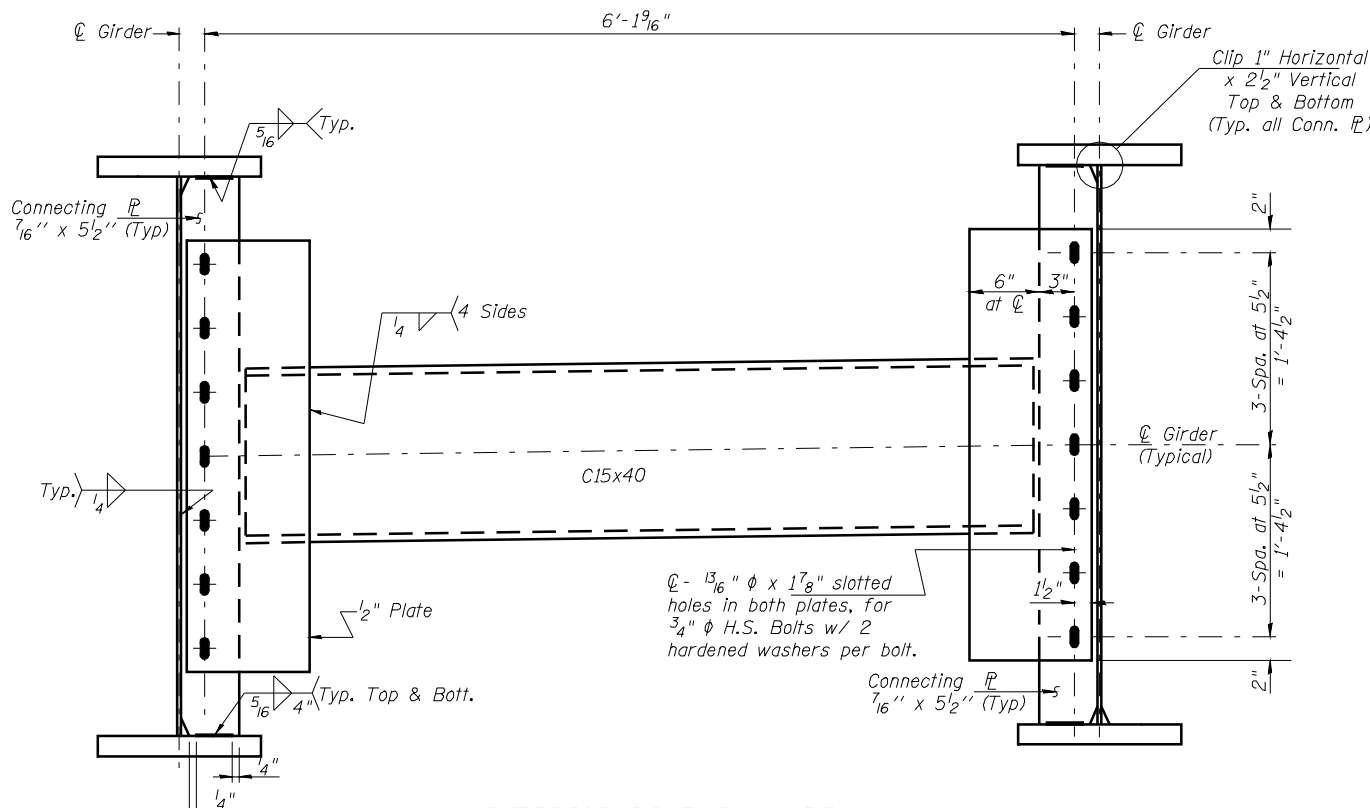
INTERIOR DIAPHRAGM D1 AT PIERS  
(10 Required)



**INTERIOR DIAPHRAGM D2**  
(52 Required)


*All cross frames or diaphragms shall be installed as steel is erected and secured with erection pins and bolts except as otherwise noted. Individual cross frames or diaphragms at supports may be temporarily disconnected to install bearing anchor rods.*

*Bolts in slotted holes shall be finger tight until the second stage pour is complete, and position slots so bolts start at one end with no concrete load and finish near the opposite end under deck load, allowing maximum displacement without laterally stressing main members.*



**INTERIOR DIAPHRAGM D3**  
(13 Required)

STRUCTURAL STEEL DETAILS (Sheet 1 of 2)  
F.A.P. 614 (IL 78) OVER WOLF LAKE  
(PUBLIC BODY OF WATER)  
SECTION 144 (B-2)  
MASON COUNTY  
STA. 862+41.25  
STRUCTURE NUMBER 063-0500

© Copyright Hanson Professional Services Inc. \$MS_YEARS\$		JOB NO. 07S2026	SHEET NO. 16  29 SHEETS	F.A. RTE. 614	SECTION 144(B-1, B-2)	COUNTY Mason	TOTAL SHEETS 351	SHEET NO. 123
 Hanson Professional Services Inc.		DATE 03/27/09		CONTRACT NO. 72A76		FED. ROAD DIST. NO.   IITINOTS   FED. AID PROJECT		

LAYOUT	TEH	10/25/08
DRAWN	Rod	12/05/08
REVIEWED	TEH	12/11/08