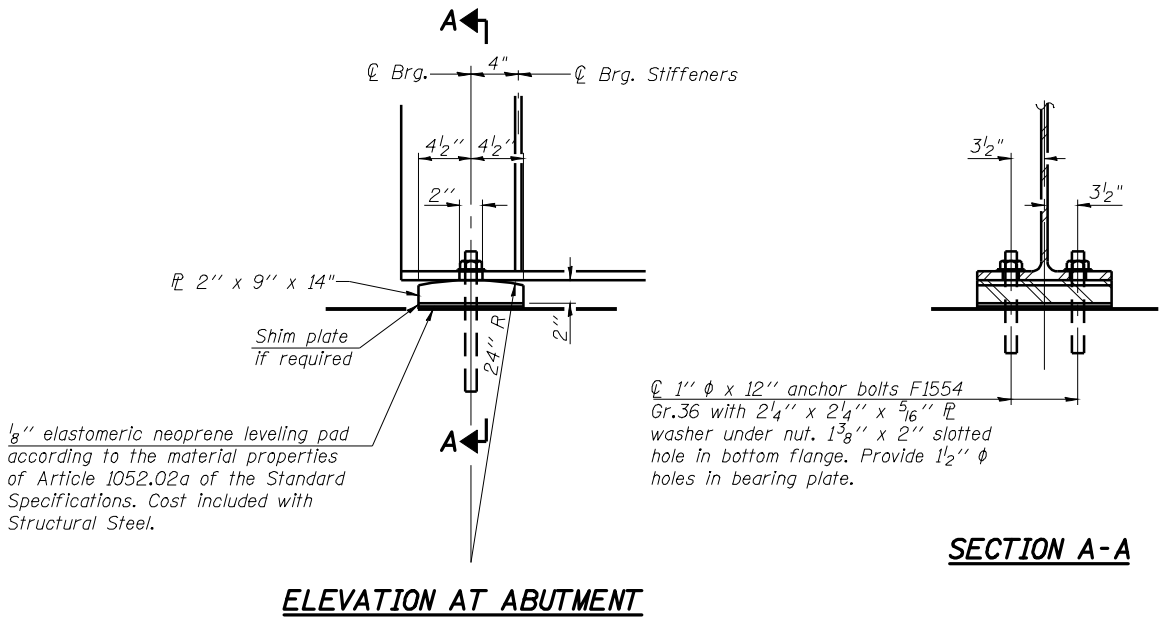
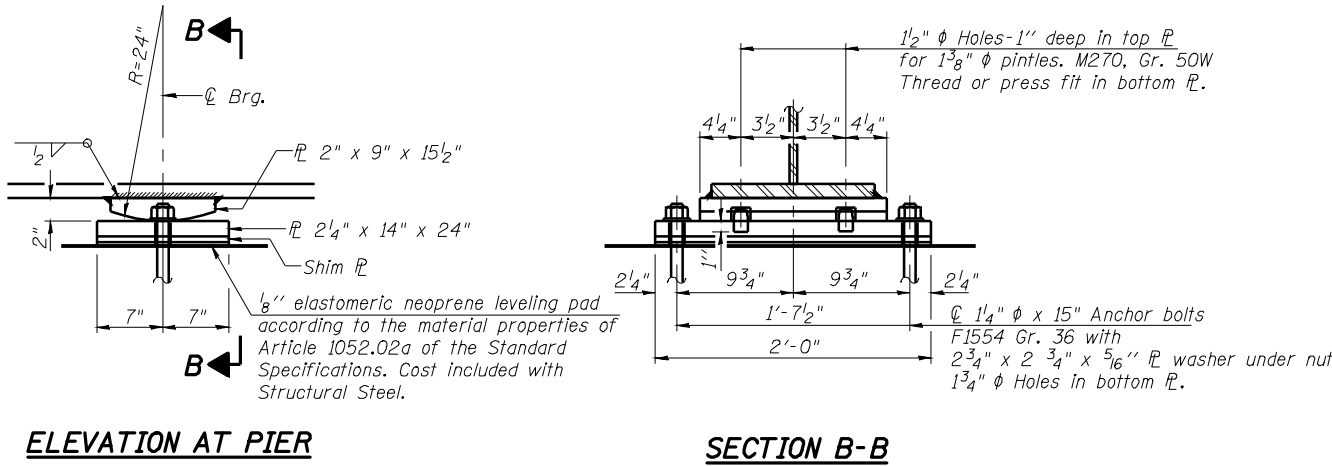


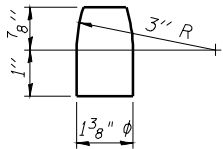
STATE OF ILLINOIS
DEPARTMENT OF TRANSPORTATION



INTEGRAL ABUTMENT FIXED BEARING DETAILS



FIXED PIER BEARING DETAILS



PINTLE

Notes:

Anchor bolts shall be ASTM F1554 all-thread (or an Engineer-approved alternate material) of the grade(s) and diameter(s) specified. ASTM A307 Grade C anchor bolts may be used in lieu of ASTM F1554 Grade 36 (Fy=36ksi). The corresponding specified grade of AASHTO M314 anchor bolts may be used in lieu of ASTM F1554.

Anchor bolts may be either cast in place or installed in holes drilled after the supported member is in place. Drilled and set anchor bolts shall be installed according to Article 521.06 of the Standard Specifications.

Steel members required for the bearing assembly shall be included in the cost of Structural Steel.

Two 1/8 in. adjusting shims shall be provided for each bearing in addition to all other plates or shims and placed as shown on bearing details.

The anchor bolt lengths shown are the required total lengths for cast-in-place headed anchor bolts. The required total length for the sealed capsule alternate anchor bolt shall be according to the manufacturer's recommendations.

The structural steel plates and pintles of the Bearing Assembly shall conform to the requirements of AASHTO M270 Grade 50W.

BILL OF MATERIAL

Item	Unit	Total
Anchor Bolts, 1"	Each	24
Anchor Bolts, 1 1/4"	Each	24

BEARING DETAILS
F.A.P. 614 (IL 78) OVER WOLF LAKE
(PUBLIC BODY OF WATER)
SECTION 144 (B-2)
MASON COUNTY
STA. 862+41.25
STRUCTURE NUMBER 063-0500

PROFESSIONAL DESIGN FIRM LICENSE #184-001084

© Copyright Hanson Professional Services Inc. \$MS_YEAR\$ Hanson Professional Services Inc.	JOB NO. 07S2026	SHEET NO. 18 29 SHEETS	F.A. RTE. 614	SECTION 144(B-1, B-2)	COUNTY Mason	TOTAL SHEETS 351	SHEET NO. 125
	DATE 03/27/09		CONTRACT NO. 72A76		FED. ROAD DIST. NO. ILLINOIS FED. AID PROJECT		

LAYOUT TEH 10/25/08
DRAWN Rod 12/08/08
REVIEWED TEH 12/11/08
Mn-3/2009 07:59:00 AM
C:\m\work\PM1007\LA09\HWR\0314498-063-0500 Master Sheet File.dgn