

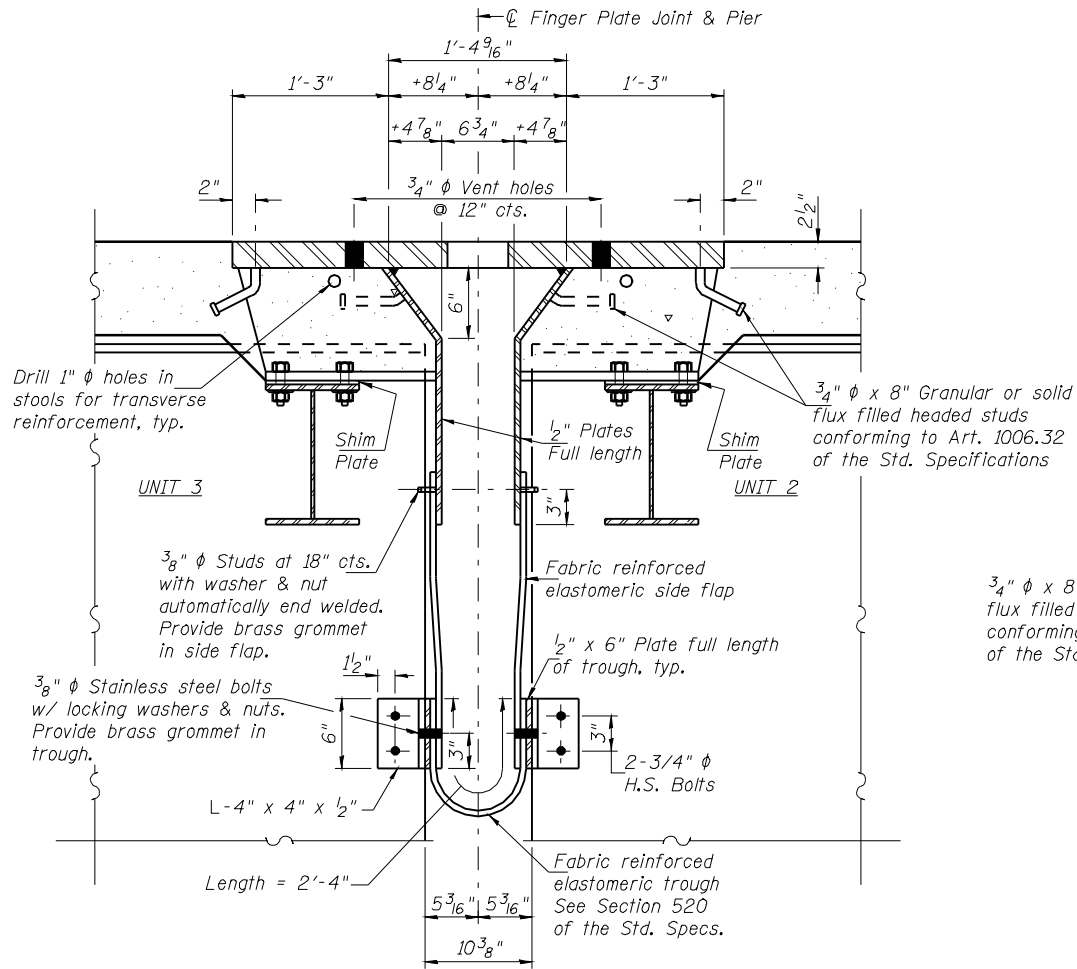
STATE OF ILLINOIS
DEPARTMENT OF TRANSPORTATION

ROUTE NO.	SECTION	COUNTY	TOTAL SHEETS	SHEET NO.
FAP Rte 614	144(B-1)	Cass & Mason	351	171
FED. ROAD DIST. NO. 7		ILLINOIS	FED. AID PROJECT-	

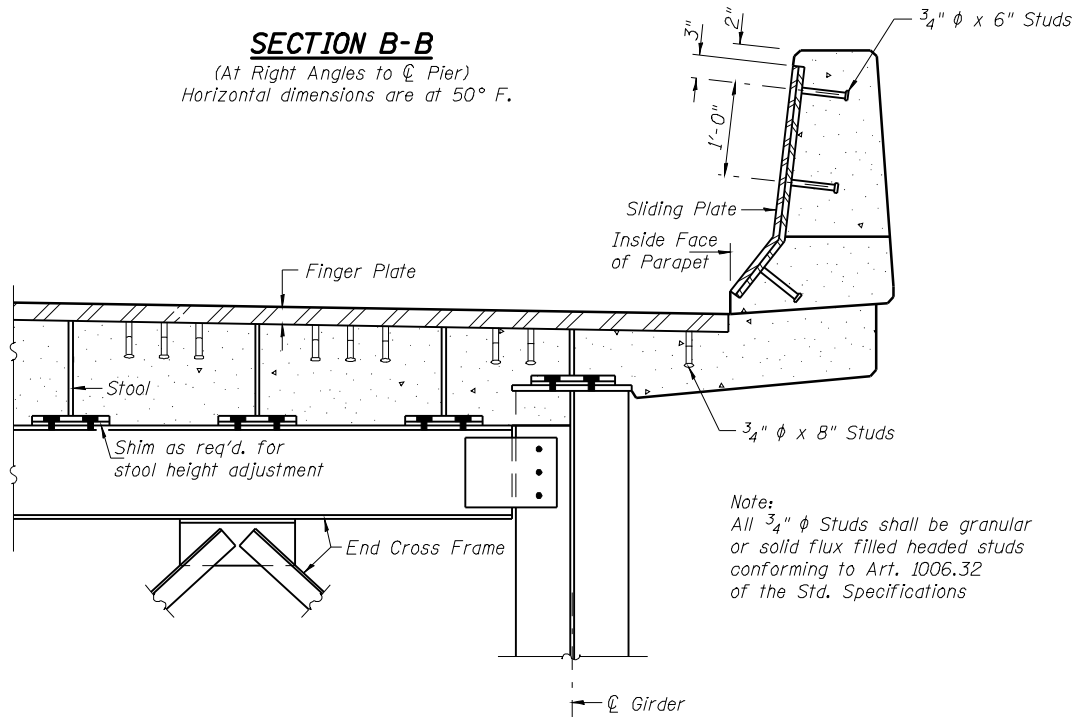
SHEET NO. 35

86 SHEETS

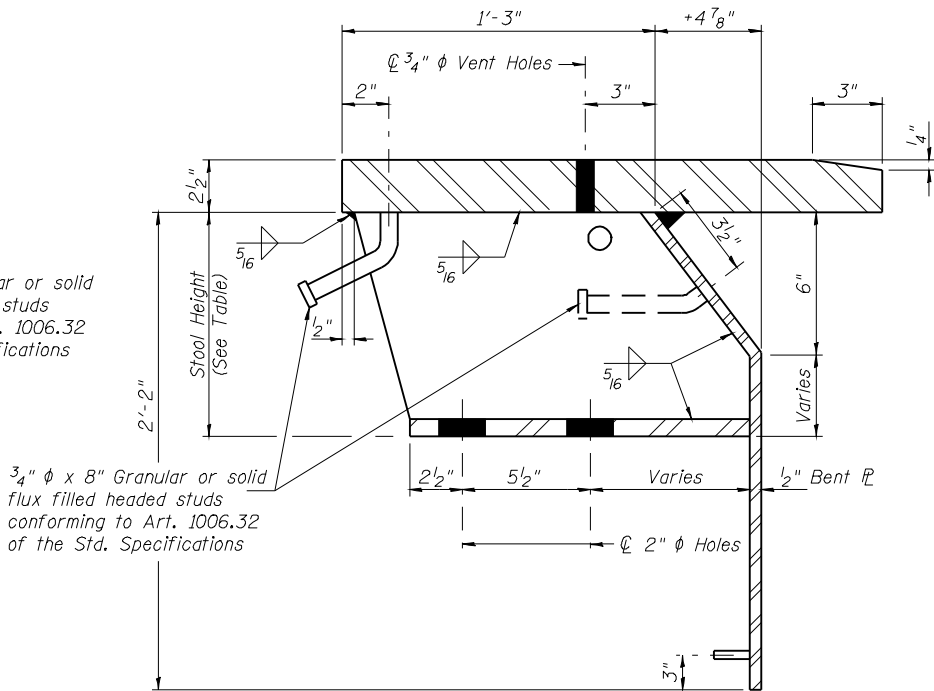
Contract #72A76



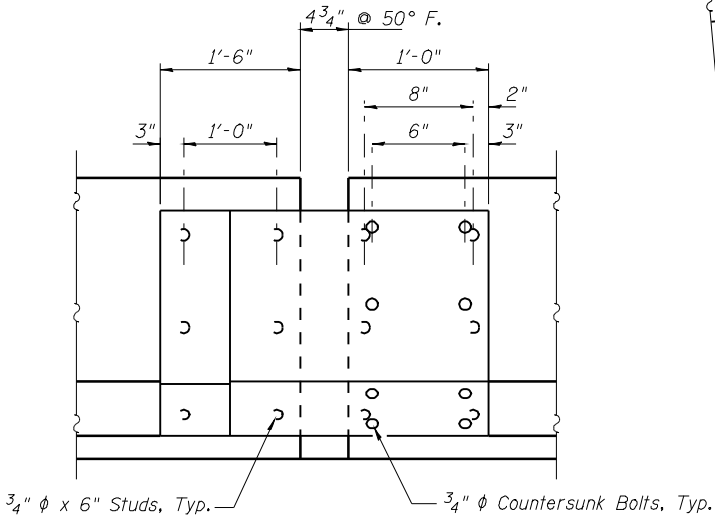
SECTION B-B
(At Right Angles to ϕ Pier)
Horizontal dimensions are at 50° F.



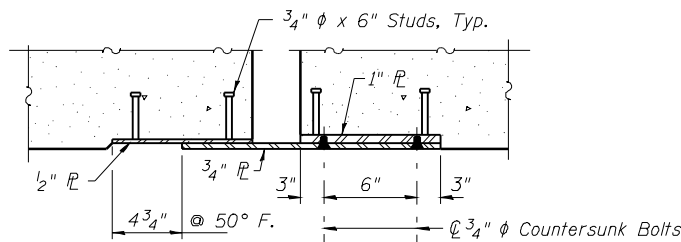
DETAIL 1



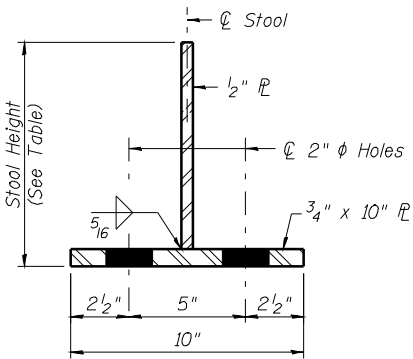
STOOL DETAIL



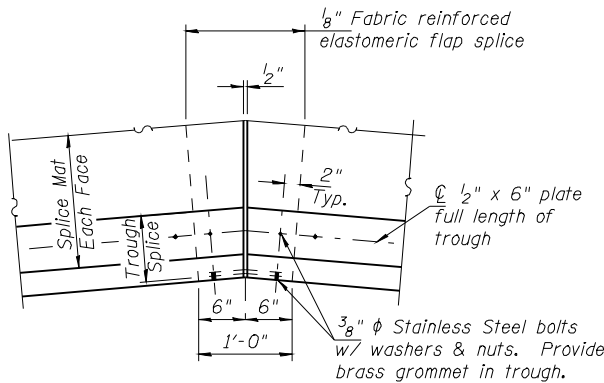
INSIDE ELEVATION OF PARAPET AT JOINT



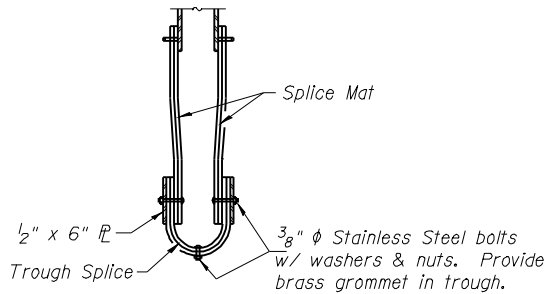
HORIZONTAL SECTION OF PARAPET AT JOINT



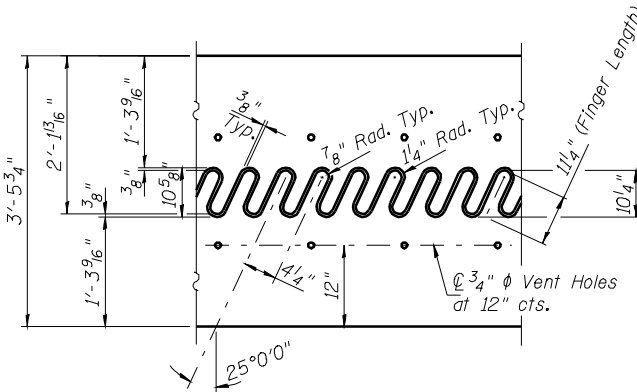
SECTION THRU STOOL



TROUGH SPLICE DETAIL

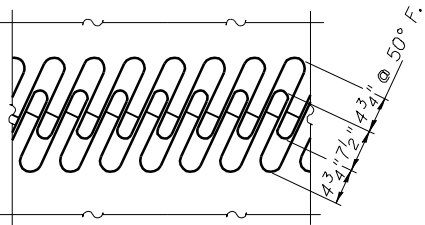


SECTION THRU TROUGH SPLICE



FLAME CUTTING DIAGRAM

Cut from ϕ 2 1/2" x 3'-5 3/4" x 41'-3 5/8"



FINGER PLATE SETTING DIAGRAM

- NOTES:
1. Work this sheet with Sheet 34 of 86.
 2. Provide 1-1/4", 1-1/8" and 1-1/16" shim plates for stools supported by girders and cross frames.

FINGER PLATE EXPANSION JOINT DETAILS (PIER 6)
F.A.P. 614 (IL 78) OVER SANGAMON RIVER
PUBLIC WATERS
CASS & MASON COUNTIES
SECTION 144 (B-1)
STA. 913+26.00
STRUCTURE NUMBER 009-0510

PROFESSIONAL DESIGN FIRM LICENSE #184-001084

© Copyright Hanson Professional Services Inc. \$MS_YEAR\$

HANSON
Hanson Professional Services Inc.

JOB NO.

07S2026

DATE

03/27/09

Min: 3/2009 080207 AM
CSM: JMK/PHD/LL/SLH/LWR/2034498-000-050 Master Sheet Flt/dgn
LAYOUT 09/12/08
DRAWN 09/10/08
REVIEWED 09/30/08